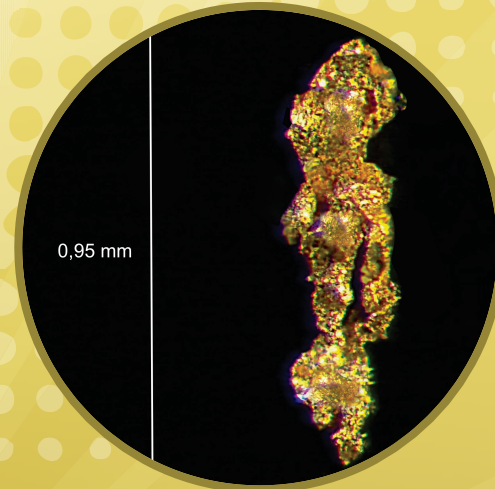




Champs d'or en
BEAUCE
Gold Fields

**A MAJOR CANADIAN PLACER TO HARD ROCK
GOLD EXPLORATION AND MINING PROJECT**

TSX-V Listing Symbol: BGF



DISCLAIMERS

This presentation includes certain “forward-looking statements”

All statements, other than statements of historical fact, included herein, including, without limitation, statements regarding future plans and objectives of the company, are forward-looking statements that involve various risks, assumptions, estimates and uncertainties, and any or all of these future plans and objectives may not be achieved.

These statements reflect the current expectations or beliefs of Beauce Gold Fields. (“the Company”) and are based on information currently available to the Company. There can be no assurance that such statements will prove to be accurate, and actual results and future events could differ materially from those anticipated in such statements. All of the forward looking statements contained in this presentation are qualified by these cautionary statements and the risk factors described above. Furthermore, all such statements are made as of the date this presentation is given.

An investment in the Company is speculative due to the nature of the its business. The ability of the Company to carry out its plans as described in this confidential presentation is depending on obtaining the required capital. There is no assurance that the Company will be able to successfully raise the capital required or to complete each of the growth initiatives described. Investors must rely upon the ability, expertise, judgment, discretion, integrity and good faith of the management and Board of the Company.

Reference materials source:

NI 43-101 HPQ Report Beauce Gold, Histoire d’or en Beauce, Drouin 2007 Obalski 1898

Reference to historical gold figures in this entire presentation do not comply with the CIM reporting standards National Instrument 43-101 for mineral resources or reserves and should not be relied upon. While the Company considers these historical estimates to be relevant to investors as it may indicate the presence of mineralization, a QP for the Company has not done sufficient work to classify the historical estimates and Beauce Gold Fields is not treating these historical estimates as a current mineral resource



PLACER TO HARD ROCK EXPLORATION IN CANADA

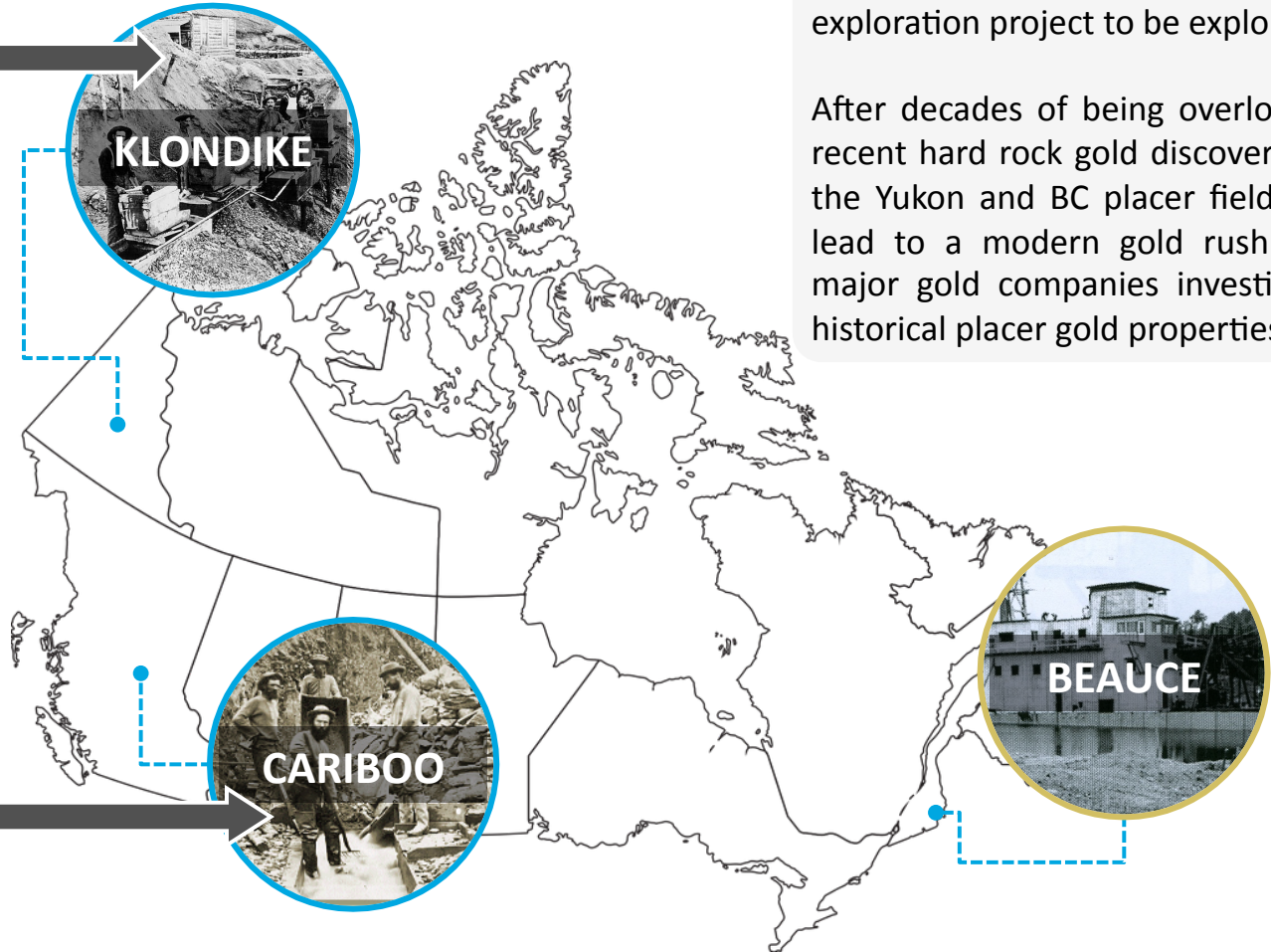
GOLDCORP

KINROSS

BARRICK

AGNICO EAGLE

OSISKO
GOLD ROYALTIES



Beauce is the last remaining Canadian placer to hard rock gold exploration project to be explored

After decades of being overlooked, recent hard rock gold discoveries in the Yukon and BC placer fields has lead to a modern gold rush with major gold companies investing in historical placer gold properties



www.beaucegold.com



3000 Omer-Lavallée St, Suite 306
Montreal, Quebec, CANADA, H1Y 3R8



+1 514 846 3271

PROPERTY LOCATION



The Beauce Gold Field Property is located near the town of Saint-Simon-les-Mines in the Beauce region of southern Quebec.



1 Hour

About 1 hours drive south of Quebec City and 15km north of the town of St-George de Beauce.



360

The property is accessible year round via paved and gravel roads.



www.beaucegold.com



3000 Omer-Lavallée St, Suite 306
Montreal, Quebec, CANADA, H1Y 3R8



+1 514 846 3271

4

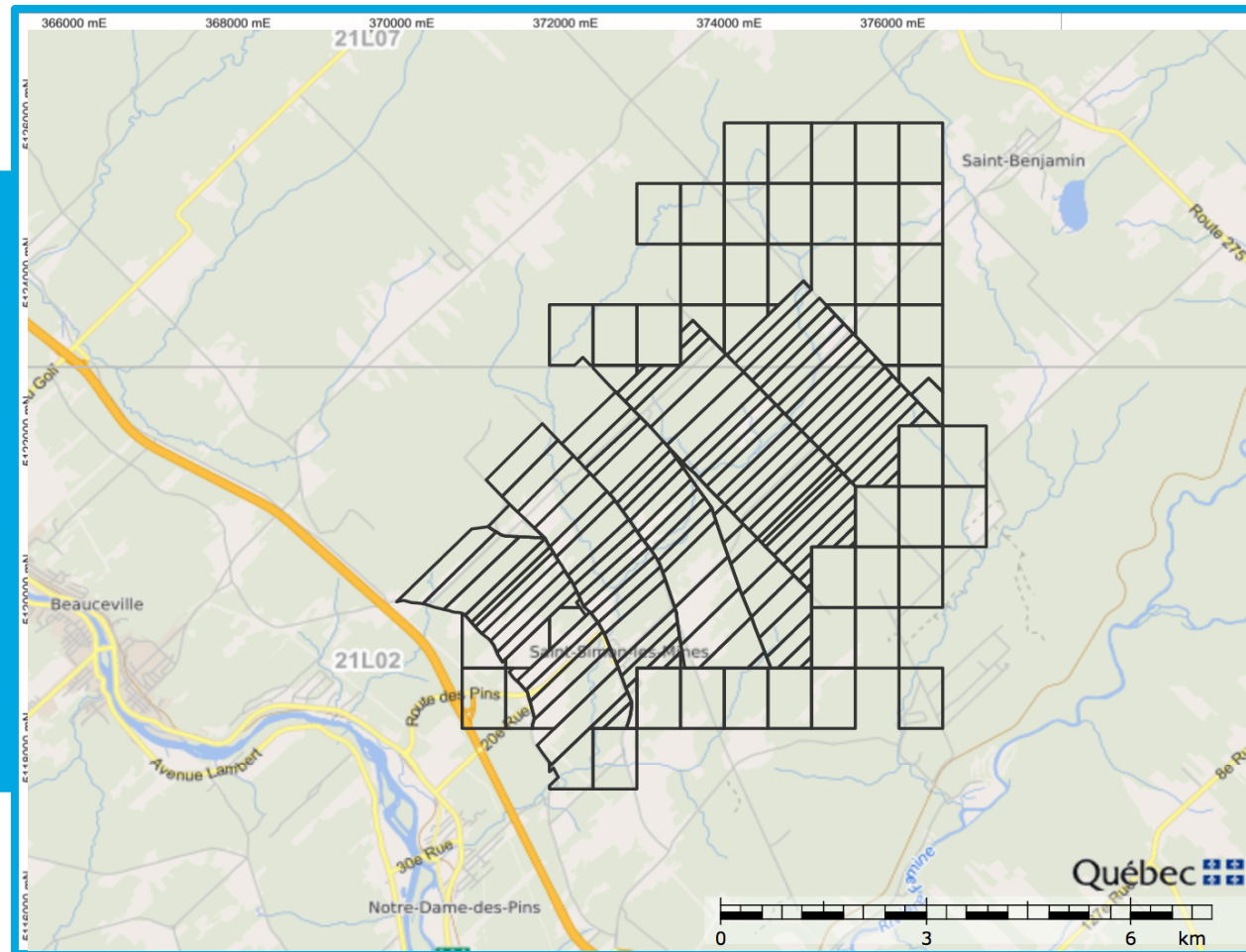
MINING CLAIMS AND REAL ESTATE

152+

claims covering the
historical Beauce
placer gold field

175 acres

(7 lots) of real estate



www.beaucegold.com



3000 Omer-Lavallée St, Suite 306
Montreal, Quebec, CANADA, H1Y 3R8



+1 514 846 3271

5

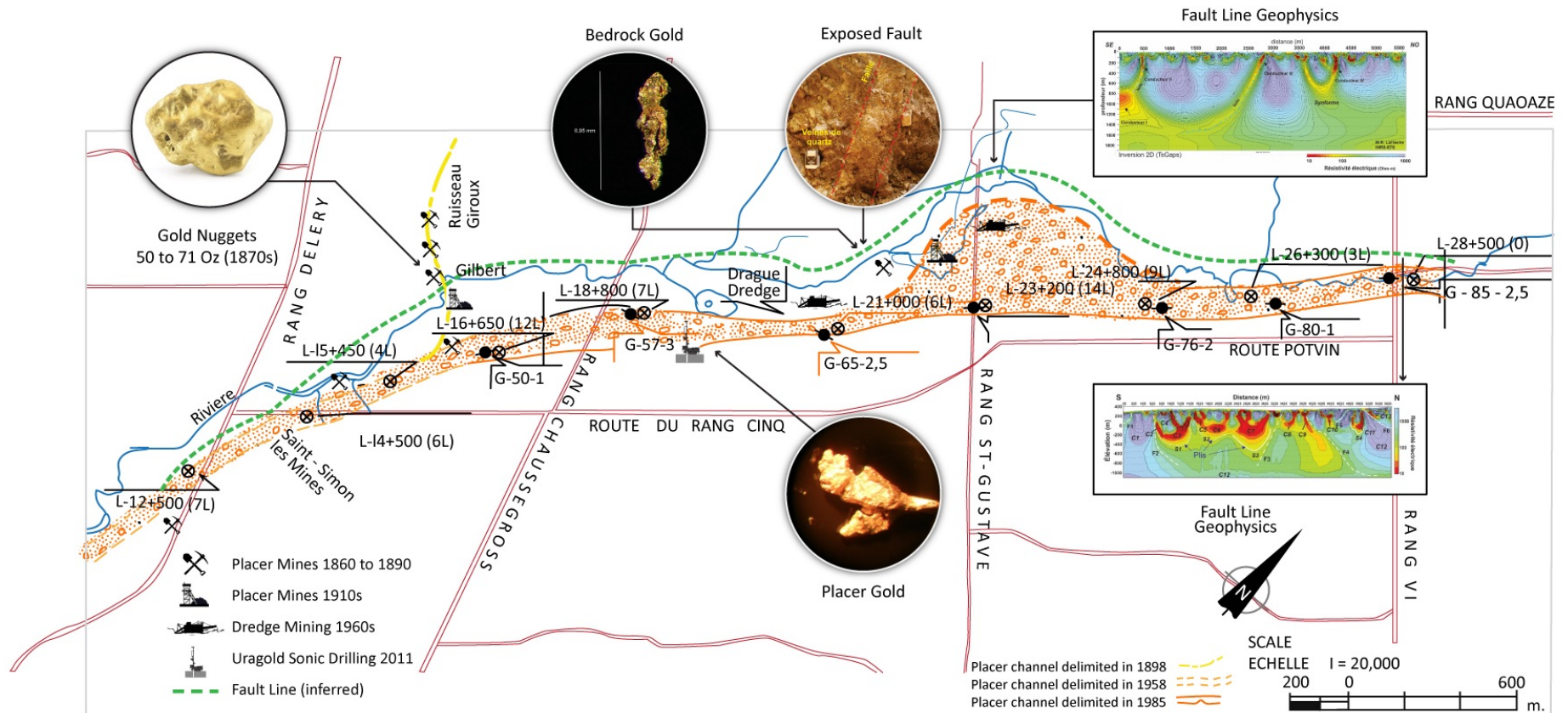


BGF owns **6** real estate
lots totaling **176** acres in
St-Simon-les-Mines



PROPERTY OVERVIEW

- Six KM long placer channel
- Site of Canada’s first gold rush, before the Klondike
- 50 to 71 ounce gold nuggets Largest in Canada
- Past industrial placer mining operations
- Underexplored – Historical focus of past companies was exploitation vs exploration



100 YEARS OF GOLD MINING OPERATIONS 1860 - 1960



1

MINES
1860'S – 1890S



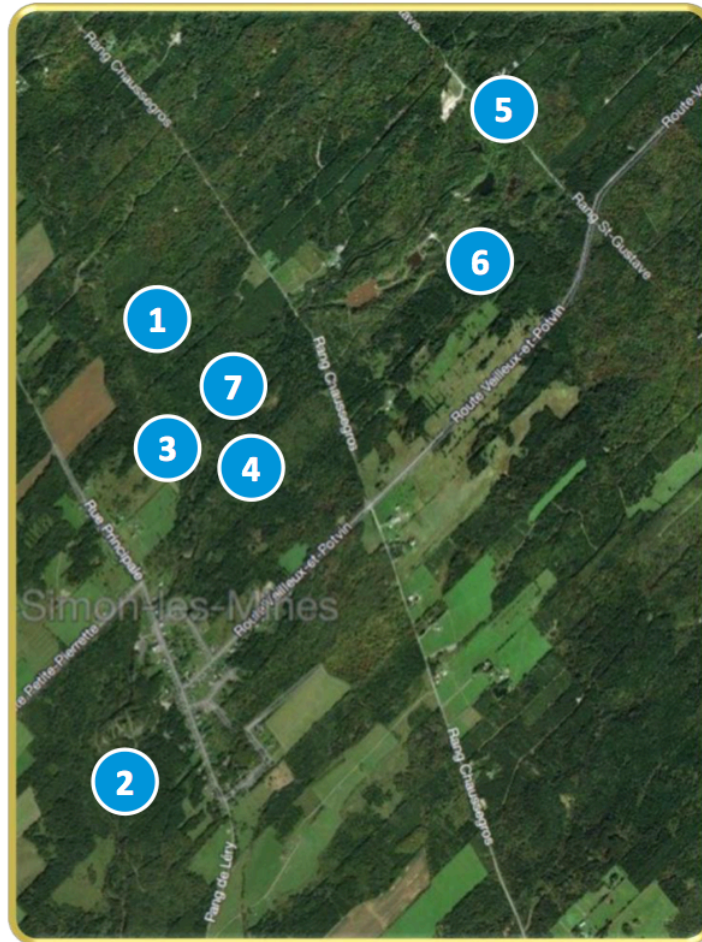
2

ST-ONGE MINE
1870'S



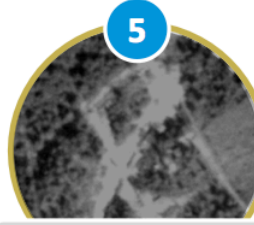
3

**50+ OZ
NUGGETS**



4

CHAMPS D' OR
1910



5

ST-GUSTAVE
1910



6

BEAUCE PLACER
1960'S

100 YEARS OF GOLD
MINING OPERATIONS
1860-1960



7



www.beaucegold.com

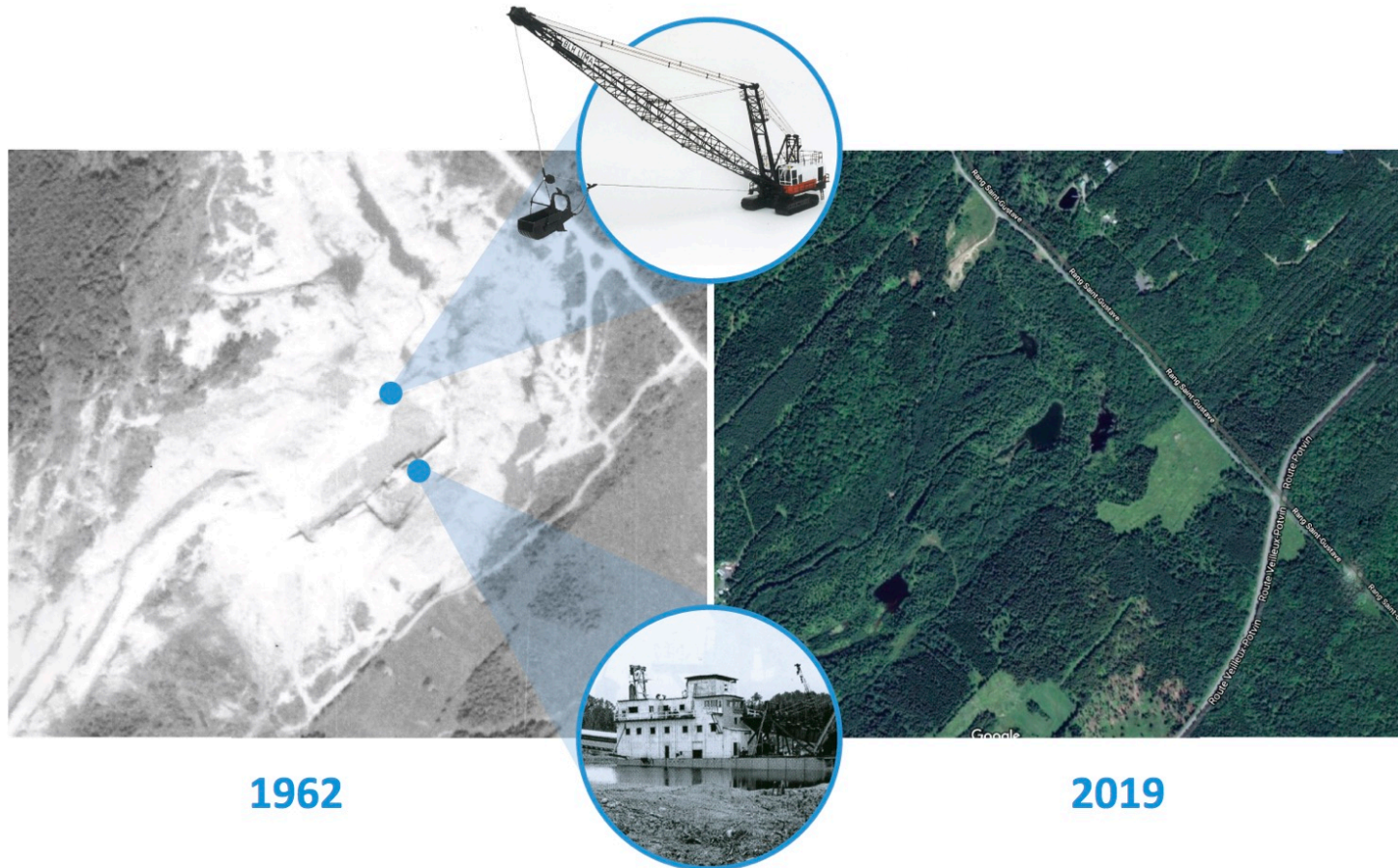


3000 Omer-Lavallée St, Suite 306
Montreal, Quebec, CANADA, H1Y 3R8



+1 514 846 3271

LARGEST PLACER GOLD MINE IN EASTERN NORTH AMERICA



www.beaucegold.com



3000 Omer-Lavallée St, Suite 306
Montreal, Quebec, CANADA, H1Y 3R8



+1 514 846 3271

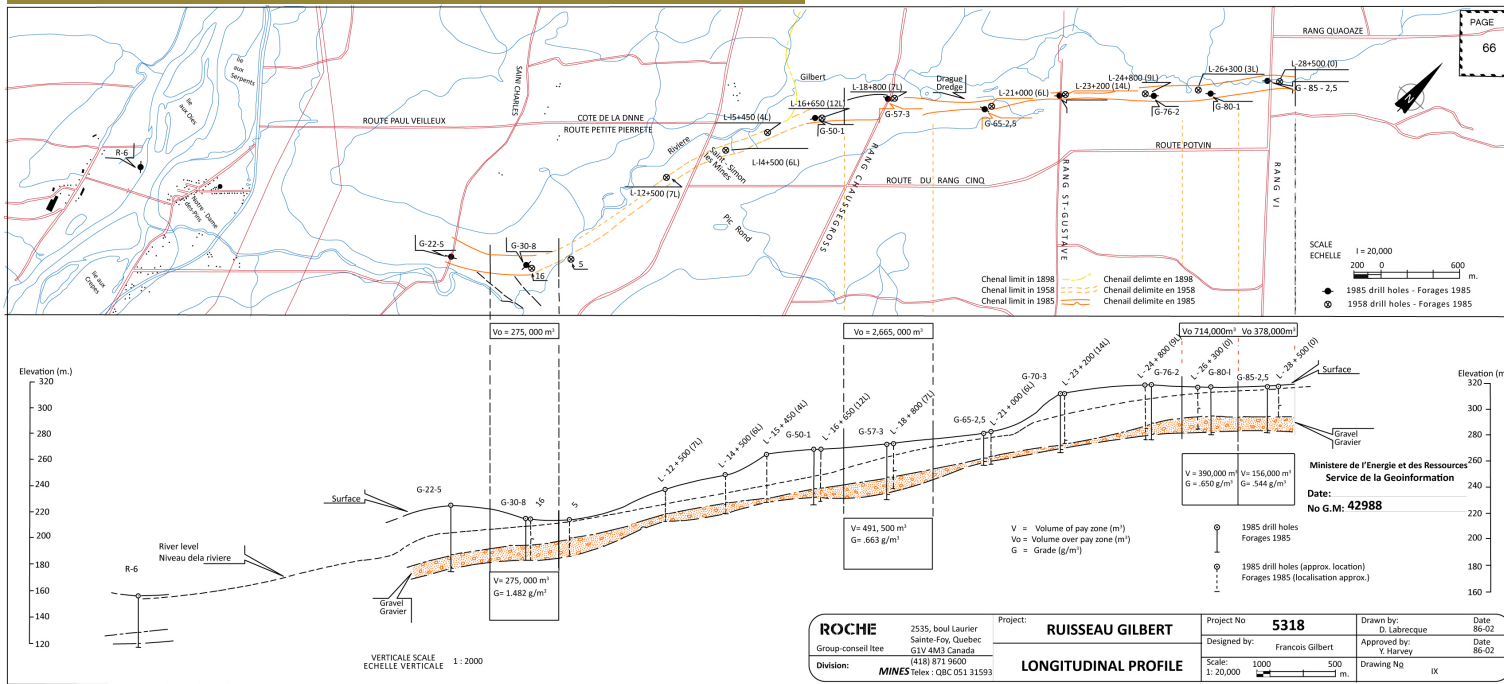
9

WE WANT TO KNOW, WHERE DID THE PLACER GOLD COME FROM?



Gold Exploration Target for the entire historical placer channel ranges between **61,000 ounces** (2,200,000 m³ @ 0.87g Au/m³) and **366,000 ounces*** (2,200,000 m³ @ 5.22 g Au/m³) *source: Beauce NI43-101 Technical Report 2018.

HISTORICAL PLACER GOLD DEPOSIT



EXPLORATION OBJECTIVE

To trace the placer gold back to bedrock sources in order to make lode gold discoveries

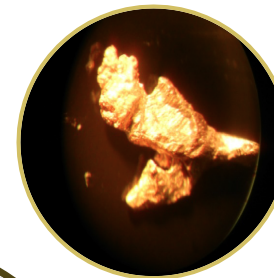
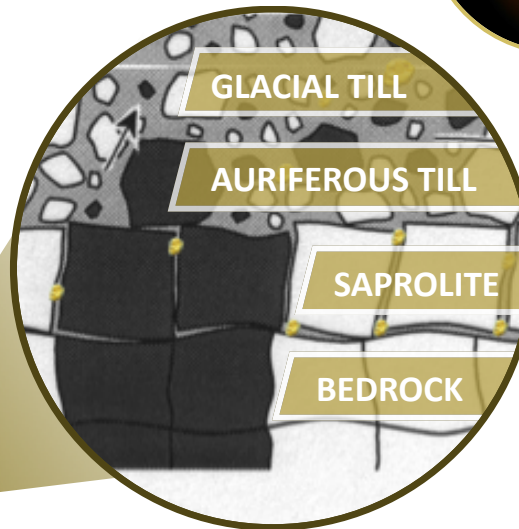
5 exploration milestones
that lead to an important
discovery



Exploration Milestone 1

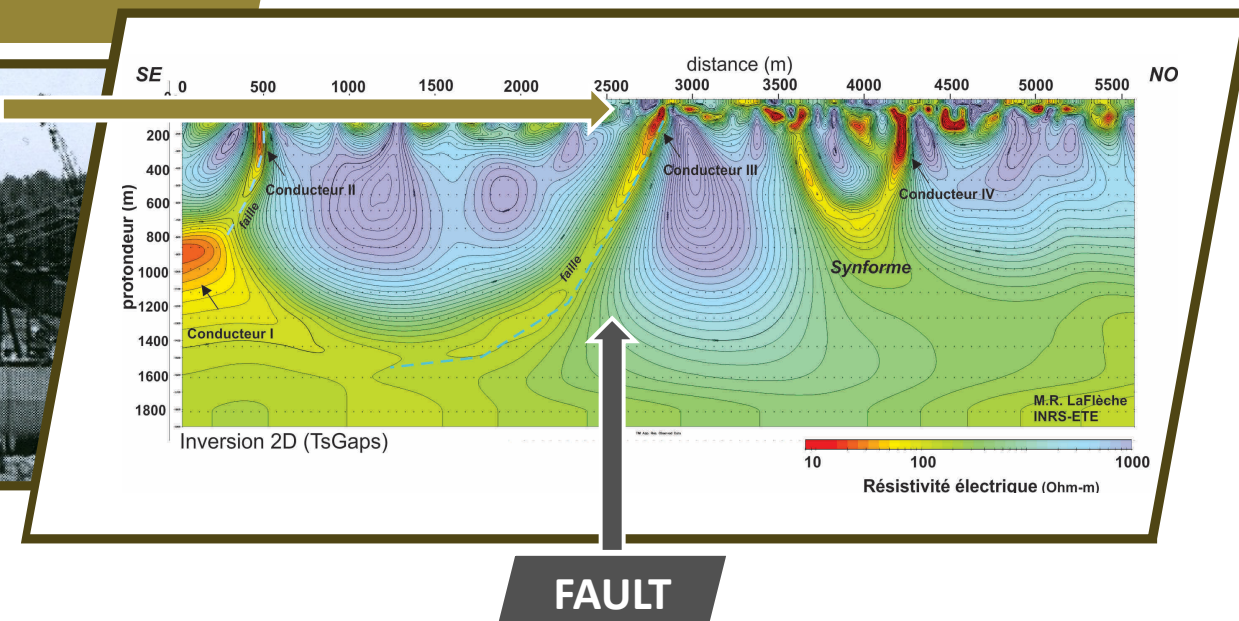
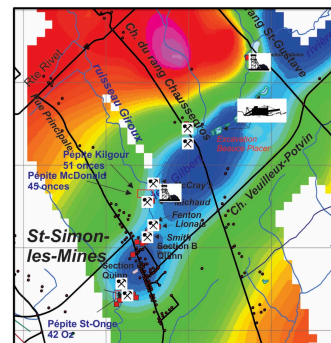
NOT alluvial gold. The historically mined placer gold deposit sits in units of saprolite and a diamictite (auriferous) till covered by a glacial till overburden. Angular and delicate placer gold grains suggests limited transport.

AURIFEROUS TILL & SAPROLITE



Exploration Milestone 2

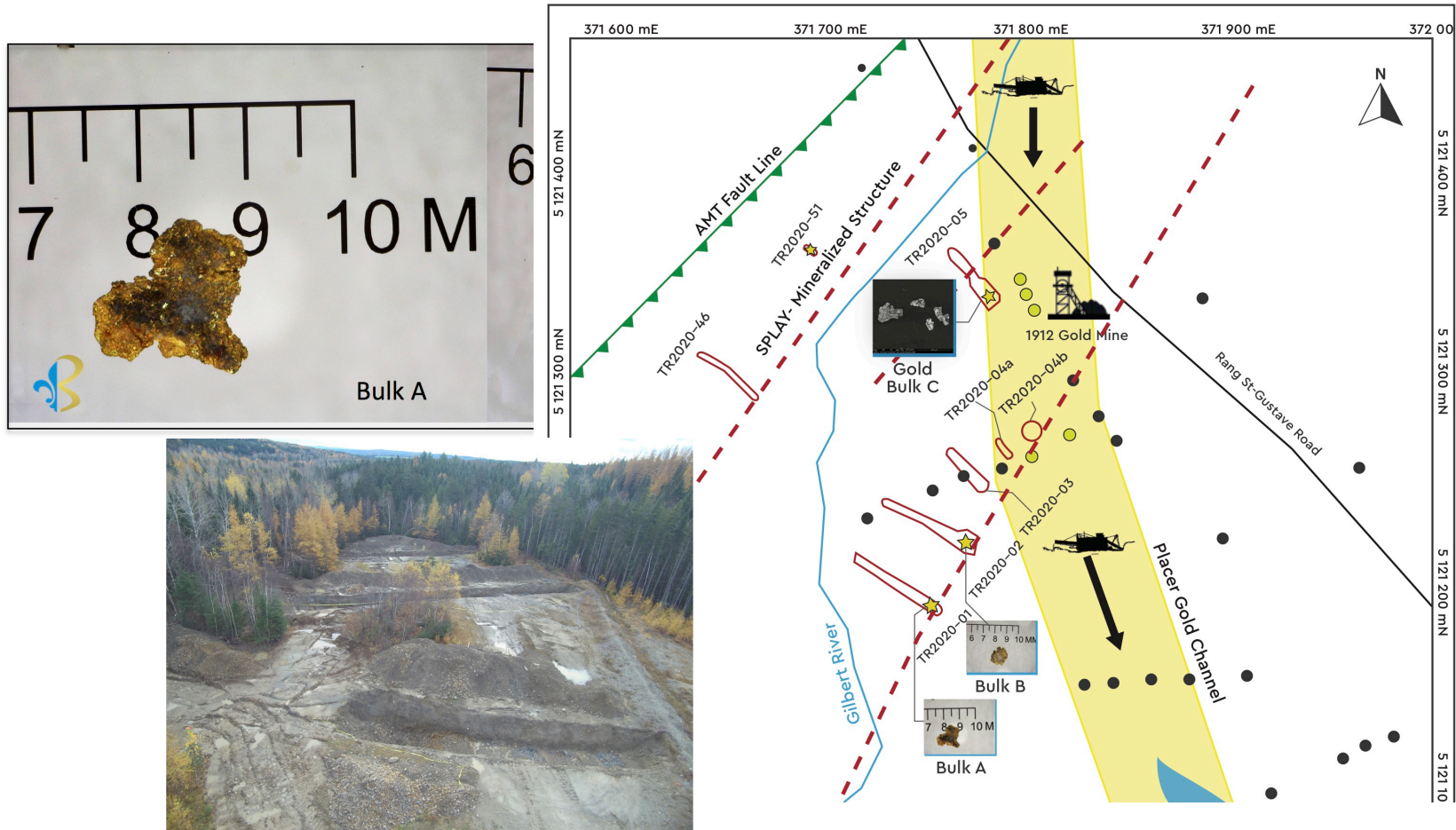
Geophysics identified a major Fault line beneath the Placer gold channel



Exploration Milestone 3

GOLD IN BEDROCK – MINERALIZED STRUCTURES

First ever discovery of hard rock gold in trenches just meters from historical placer gold channel



Exploration Milestone 4

STUDY OF GOLD PARTICLES AND LITHOLOGY IDENTIFIES ORIGINS OF PLACER GOLD

A PERFECT MATCH

Bedrock Gold found in volcanic rock from trench at Fault line



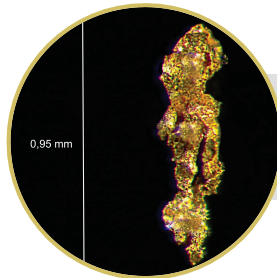
Bedrock Gold at Fault Zone same as Placer Gold



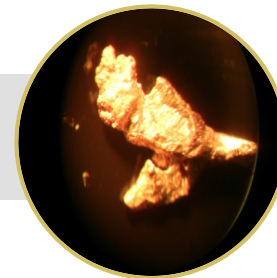
Placer Gold grains from saprolite placer channel



Same pathfinder elements As – Sb- W

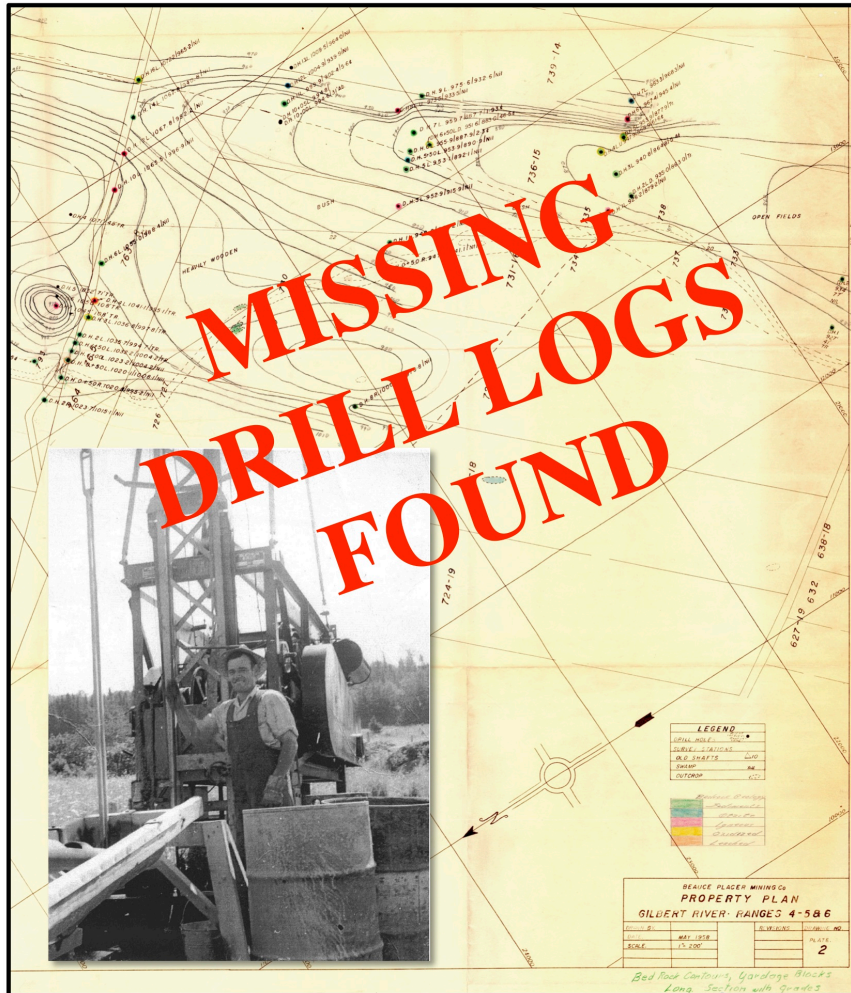


6% to 7% silver to gold content

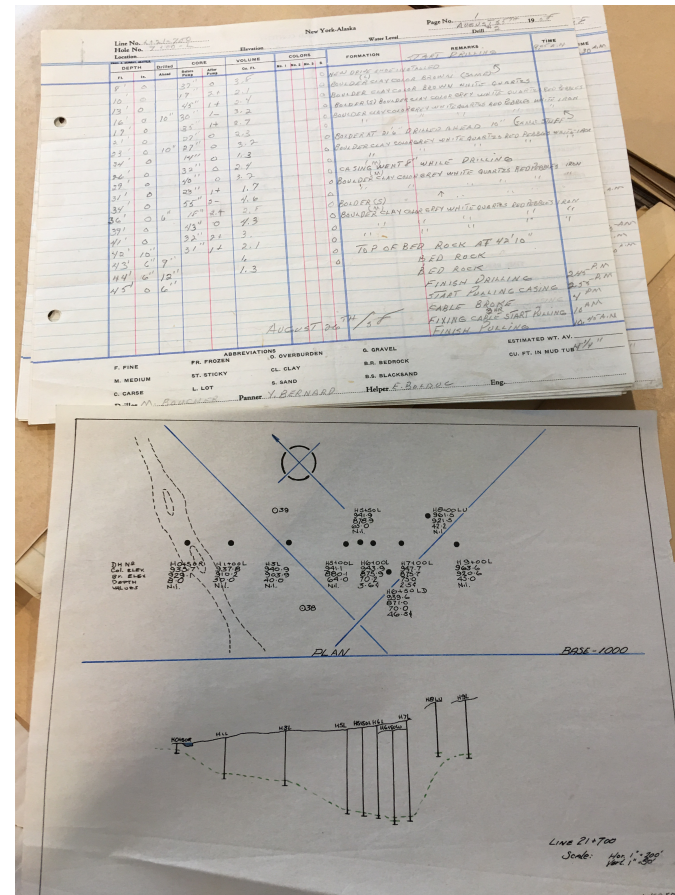


Exploration Milestone 5

LOST 1950s DRILL LOGS & RECORDS FOUND



344 NEVER BEFORE PUBLISHED
OVERBURDEN DRILL HOLES



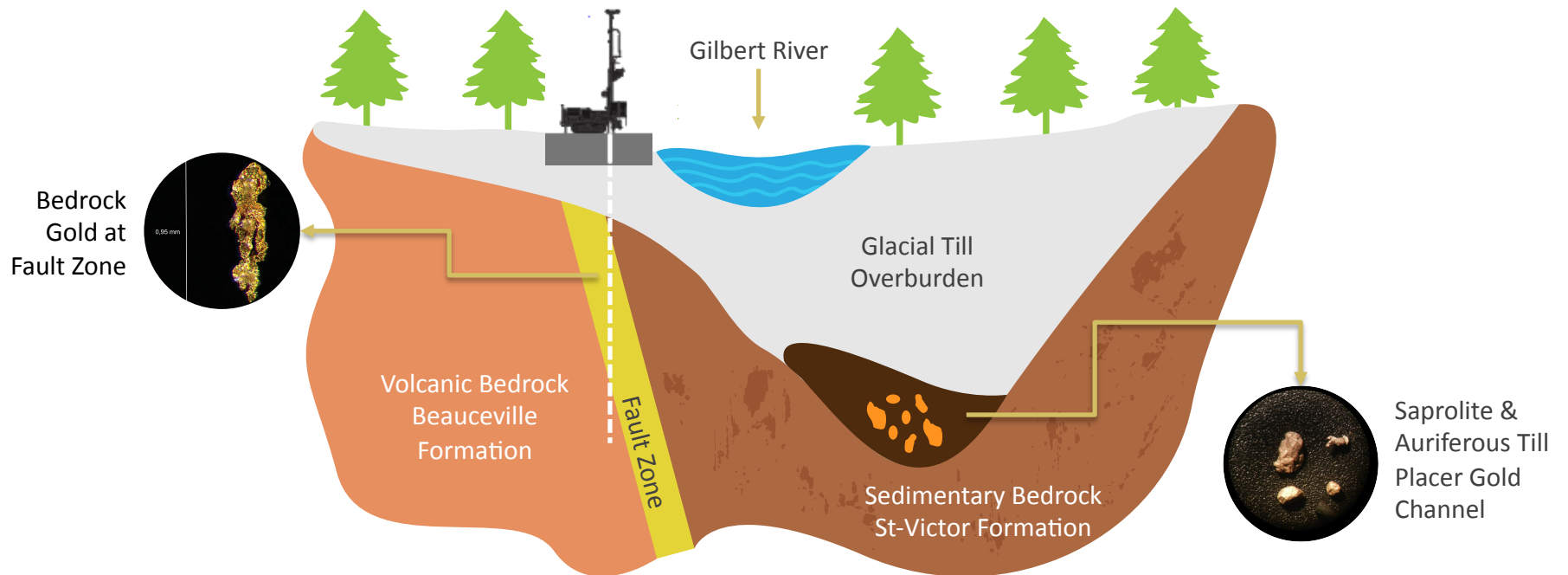
MAJOR DISCOVERY

Eroded Fault Zone A, is likely source of historical placer gold deposit B

A Exploration for hard rock lode gold deposit in newly discovered Fault Zone

B Historical placer gold deposit
G.E.T. **60,000 to 366,000 Oz Gold***

A + B = Immense \$ Potential



* Gold Exploration Target for the entire historical placer channel ranges between 61,000 ounces (2,200,000 m³ @ 0.87g Au/m³) and 366,000 ounces* (2,200,000 m³ @ 5.22 g Au/m³) *source: Beauce NI43-101 Technical Report 2018.

Theoretical cross cut of Gilbert river valley



www.beaucegold.com



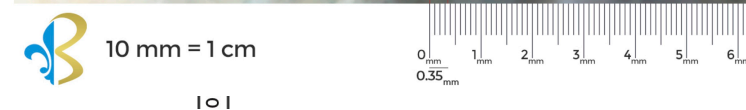
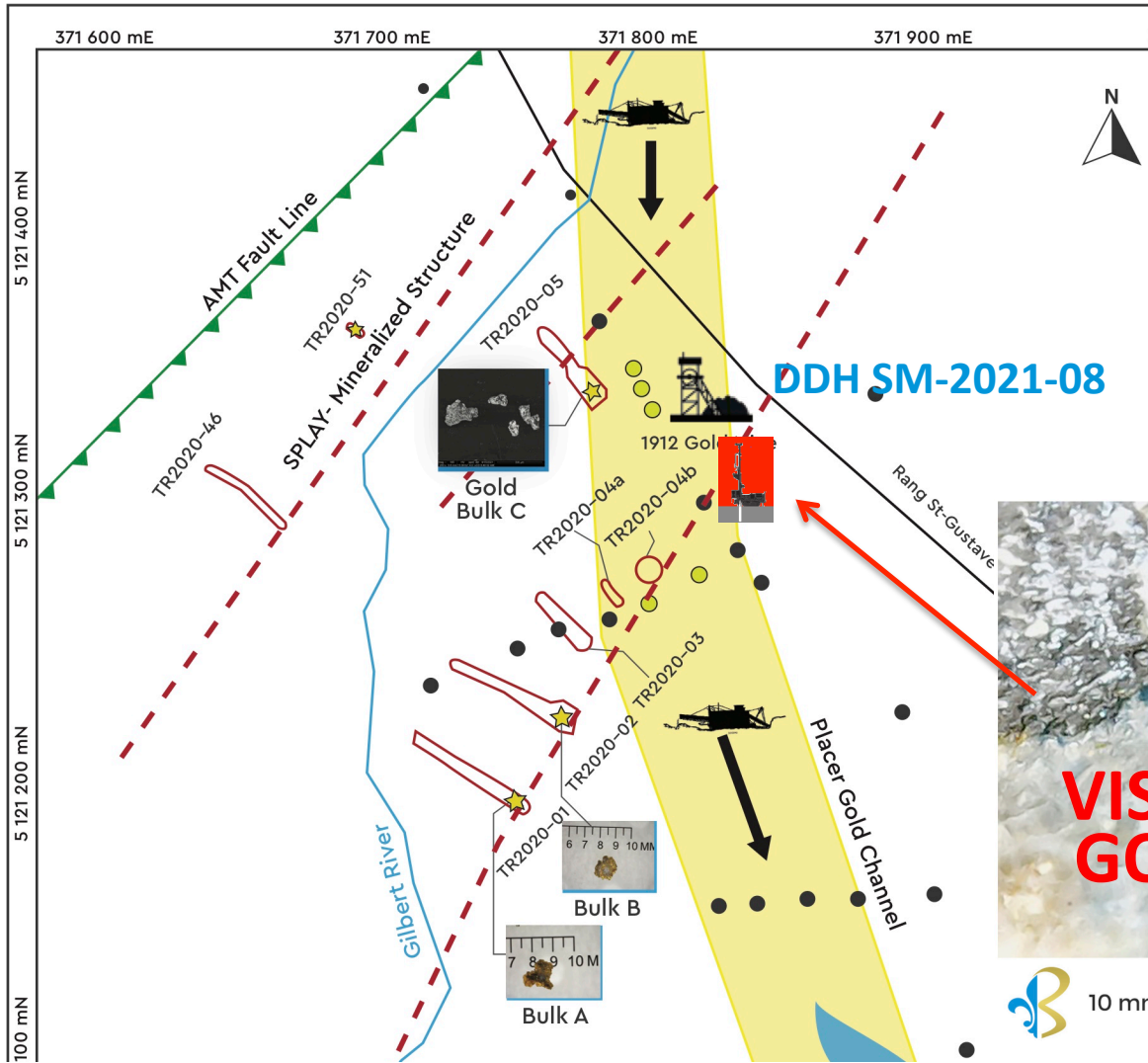
3000 Omer-Lavallée St, Suite 306
Montreal, Quebec, CANADA, H1Y 3R8



+1 514 846 3271

17

CURRENTLY DRILLING MINERALIZED STRUCTURES



www.beaucegold.com



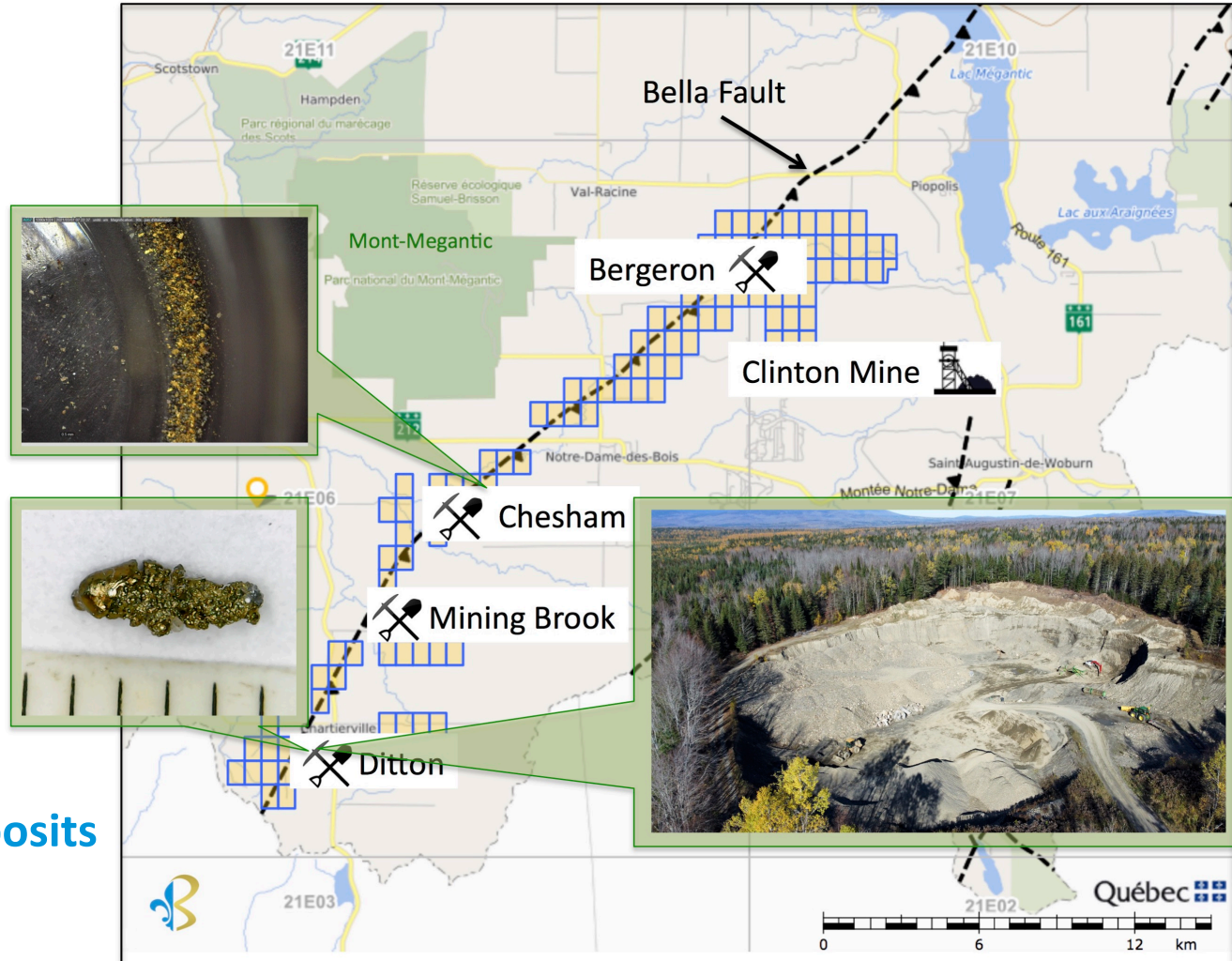
3000 Omer-Lavallée St, Suite 306
Montreal, Quebec, CANADA, H1Y 3R8



+1 514 846 3271

MEGANTIC PROPERTY – 2nd Project

**10g/t
GOLD
SAND PIT!**
Chesham sample
#798541



**4 historical
placer gold deposits
along
Bella Fault line**



www.beaucegold.com



3000 Omer-Lavallée St, Suite 306
Montreal, Quebec, CANADA, H1Y 3R8



+1 514 846 3271

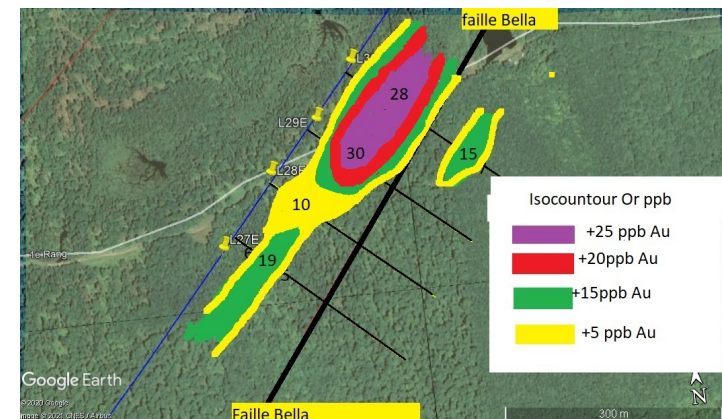
MEGANTIC PROPERTY – 2nd Project

The Mégantic property is located in southern Quebec limited to the southwest by the American border of New Hampshire and to the northeast by Lac Mégantic.



The property extends for at least 30 km along the axis of the Bella Fault. It is divided into four historic placer gold districts: the Ditton, the Mining Brook, the Chesham and Bergeron rivers.

The Bella fault line, which is the major structural element of the Mégantic property, is in contact between the Compton and Frontenac Formations. Observations suggest several intrusive phases that would be favorable to the establishment of gold mineralization.



STRONG SOCIAL ACCEPTABILITY

A community proud of its gold mining heritage

For the last 10 years, Patrick Levasseur has built strong local relationships and has garnered community support for BGF

100% Property access. All private property land owners have signed and granted the company access to their property for gold exploration

With each opportunity, BGF hires talented people from the community and will always prioritize the purchase of goods and services from local businesses



A St-Simon-les-Mines Town Hall Presentation,



Capital Structure



Shares Outstanding:

45,607,209

IPO: February 2019



Share Price (Nov, 17 2021)	\$0.12
52 Week Low	\$0.100
52 Week High	\$0.440

Ownership:
 HPQ Silicon 9%
 Insiders: 10%
 Institutional: 15%



www.beaucegold.com



3000 Omer-Lavallée St, Suite 306
 Montreal, Quebec, CANADA, H1Y 3R8



+1 514 846 3271

EXPERIENCED MANAGEMENT TEAM AND DIRECTORS

MANAGEMENT



PATRICK LEVASSEUR
President & CEO,
Director



BERNARD J. TOURILLON
B.A.A, MBA
COO and Chairman



FRANCOIS RIVARD
CFO

INDEPENDENT DIRECTORS



ROBERT GAGNON – P. GEO
Geologist, President & CEO
Pershimex Resources



ANN LEVASSEUR, B.COM, CIM
VP Investment Advisor Laurentian
Bank Securities, Treasurer, National
Council of Women of Canada



LAM CHAN THO
Bsc. A., Eng. MBA, LLB
Lawyer, Engineer

TECHNICAL ADVISORS



Jean Bernard
Geologist



Daryl Hodges
President at Ladykirk Capital
Mining and Capital Markets Executive

* Independent directors may receive additional compensation for project work.

