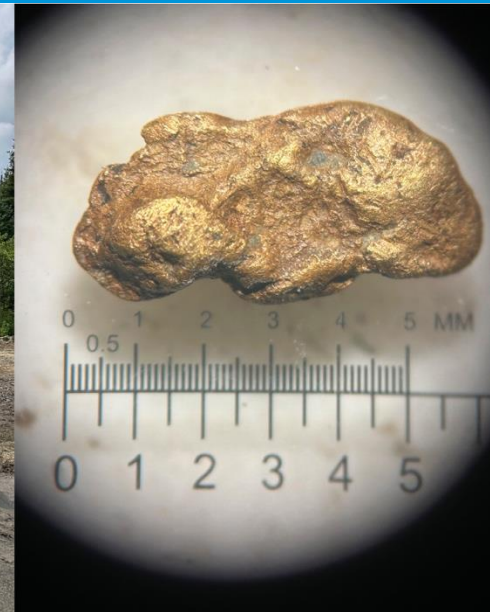


# GOLD & SILVER EXPLORATION IN SOUTHERN QUEBEC

TSX-V: BGF



June 2026

# DISCLAIMERS

## This presentation includes certain “forward-looking statements”

All statements, other than statements of historical fact, included herein, including, without limitation, statements regarding future plans and objectives of the company, are forward-looking statements that involve various risks, assumptions, estimates and uncertainties, and any or all of these future plans and objectives may not be achieved.

These statements reflect the current expectations or beliefs of Beauce Gold Fields. (“the Company”) and are based on information currently available to the Company. There can be no assurance that such statements will prove to be accurate, and actual results and future events could differ materially from those anticipated in such statements. All of the forward looking statements contained in this presentation are qualified by these cautionary statements and the risk factors described above. Furthermore, all such statements are made as of the date this presentation is given.

An investment in the Company is speculative due to the nature of the its business. The ability of the Company to carry out its plans as described in this confidential presentation is depending on obtaining the required capital. There is no assurance that the Company will be able to successfully raise the capital required or to complete each of the growth initiatives described. Investors must rely upon the ability, expertise, judgment, discretion, integrity and good faith of the management and Board of the Company.

### Reference materials source:

NI 43-101 HPQ Report Beauce Gold,  
Histoire d’or en Beauce, Drouin 2007  
Obalski 1898, Richer-Lafleche 2017 - 2021

Reference to historical gold figures in this entire presentation do not comply with the CIM reporting standards National Instrument 43-101 for mineral resources or reserves and should not be relied upon. While the Company considers these historical estimates to be relevant to investors as it may indicate the presence of mineralization, a QP for the Company has not done sufficient work to classify the historical estimates and Beauce Gold Fields is not treating these historical estimates as a current mineral resource

# BEAUCE GOLD PROPERTY: 2 OBJECTIVES

## PALEOPLACER GOLD EXPLORATION



Expand upon the historical placer gold deposit and evaluate its potential for placer gold mining

## LODE GOLD EXPLORATION



Trace the historical placer gold deposit back to its bedrock sources in order to make lode gold discoveries

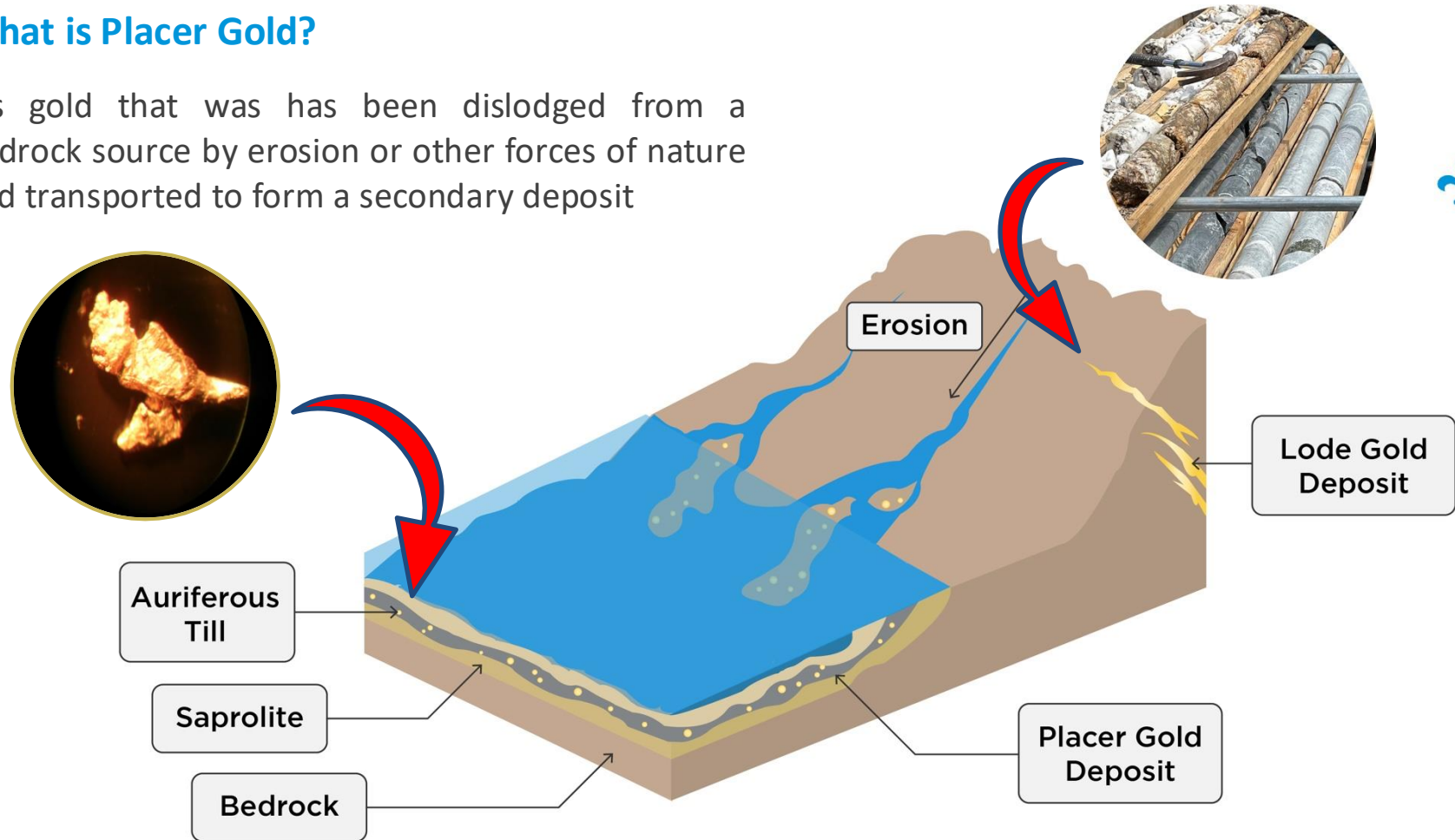
# Saddle Reef Formation - Antiform Structures likely source of Placer Gold



# PLACER GOLD TO LODE GOLD EXPLORATION

## What is Placer Gold?

It's gold that has been dislodged from a bedrock source by erosion or other forces of nature and transported to form a secondary deposit





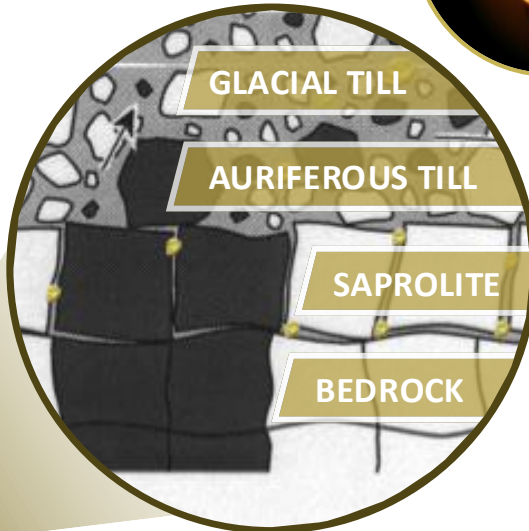
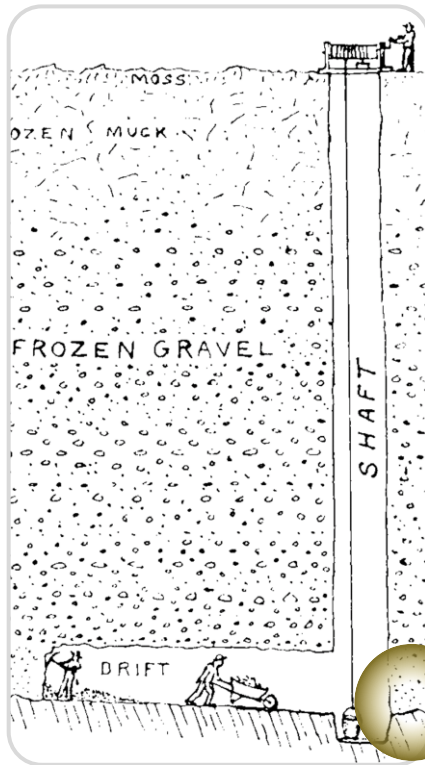
# 1847 - 1914: PLACERS MINED UNDERGROUND



The historically mined placer gold deposit sits in units of saprolite and a diamictite (auriferous) till covered by a thick glacial till overburden

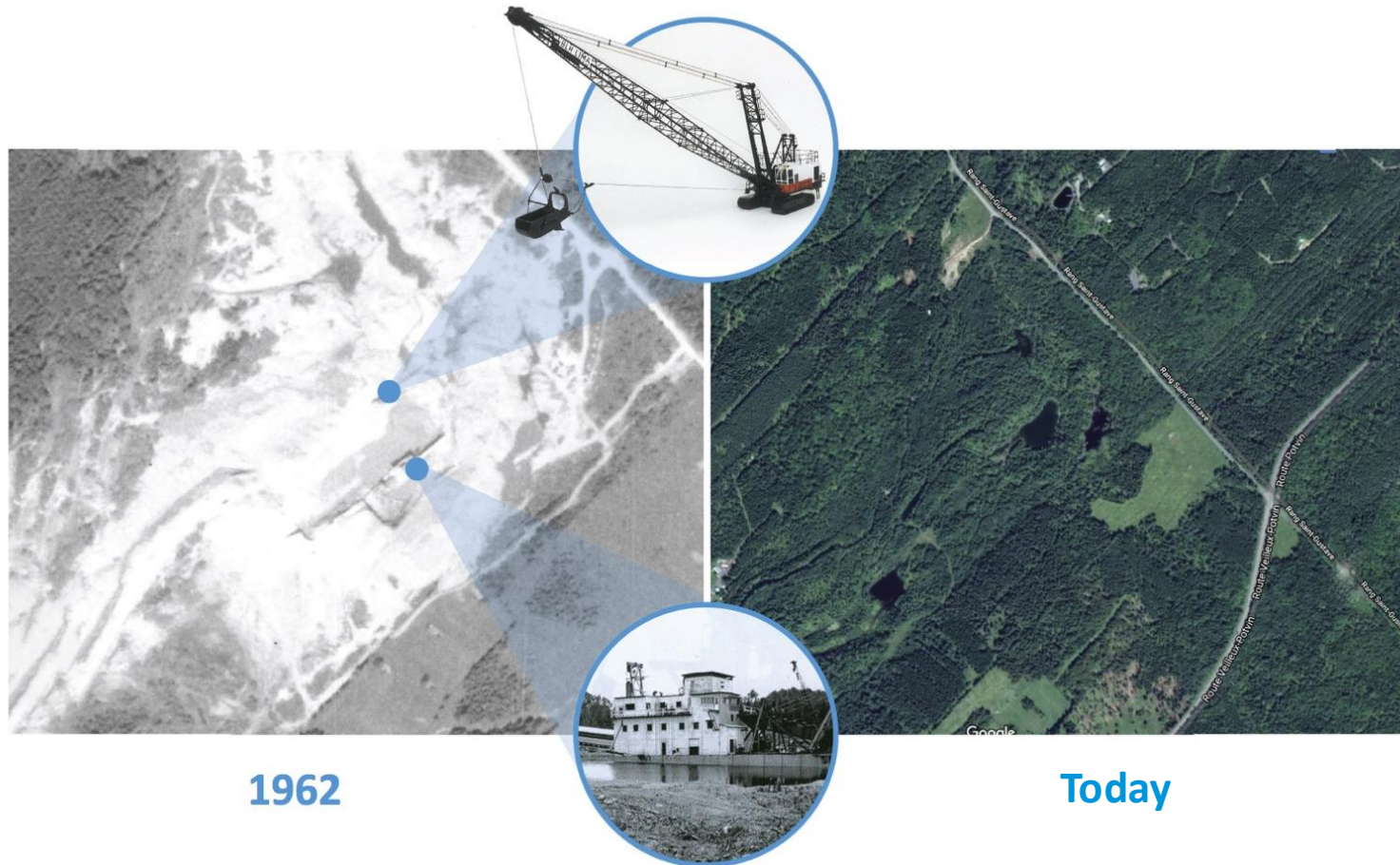
**6 KM OF TUNNELS!**

## AURIFEROUS TILL & SAPROLITE



# 1960s: LARGEST PLACER GOLD MINING OPERATION IN EASTERN NORTH AMERICA

## DRAGLINE STRIPPING & YUBA DREDGING



1962

Today

# BIGGEST BLUNDER IN CANADIAN MINING HISTORY:

## 100 years no gold exploration in Southern Quebec

Once gold was discovered in the Beauce in 1847, Charles-Joseph Chaussegros Delery, the great grandson of Seigneur (Lord) Chaussegros DeLery, claimed the family held patent rights to gold & silver in the Beauce. He hastened to obtain the letters patent of the government of London granting him the exclusive and perpetual control of the exploitation of all the precious metals found on the lands of his seigneurie.

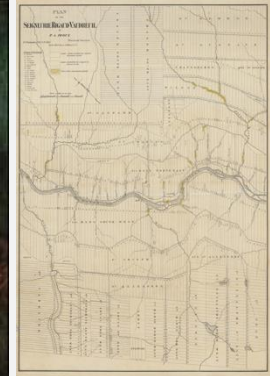
The Seigniorial system was abolished in 1854. The former tenants of the seignory in the Beauce, having obtained full ownership of their land, contested the validity of the gold patents.

The Chaussegros DeLery family imposed large royalties on miners. Lawsuits and at times violent opposition erupted between mining companies, local miners and farmers.

To prevent Seigniorial descendants from monopolizing Quebec's mineral resources, the government established in 1864, the Gold Mines Act. The introduction of the concept of mineral claims brought about a real conceptual revolution. It constitutes the very foundation of the mining regime we know today.

1881, the provincial government challenged the validity of DeLery's patent in court and demanded that it be declared illegal and quashed. In 1884, the Courts upheld the DeLery family and many other gold patents rights.

**Outcome, it became impossible throughout Southern Quebec for mining companies to stake claims for mineral exploration. It was only in 1985 that the provincial government took back mineral rights and made the region available for claiming.**



Seigneur\* Chaussegros DeLéry and map of the Rigaud Veaudreuil Seingory (Estate) today known as the Beauce

\*A Seigneur was an aristocratic title equivalent to a Lord, The Seigniorial system was a feudal system of land ownership before the British invasion of New France (Quebec) in 1759.

### Chaussegros DeLery family VS Miners



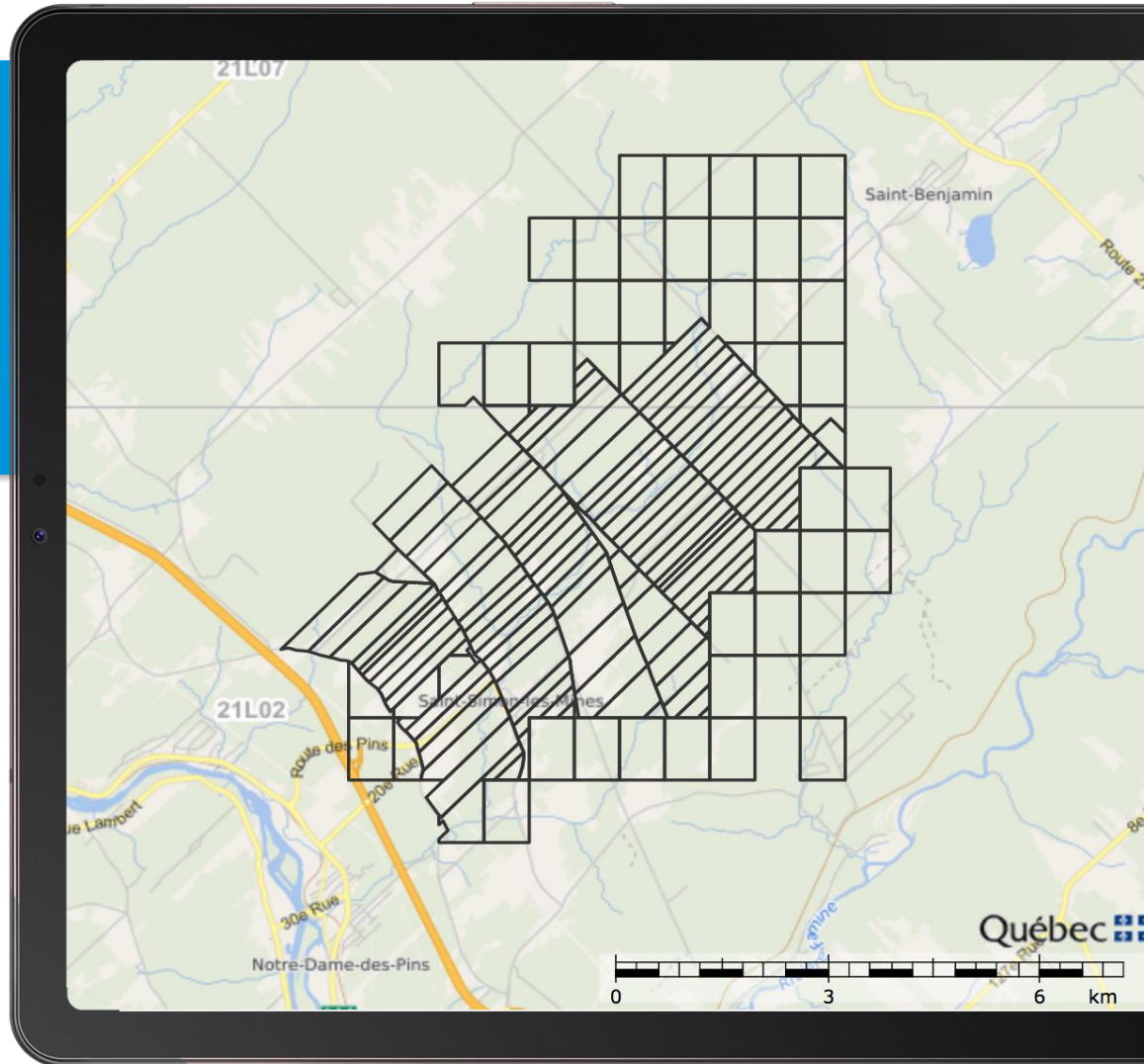
# BEAUCE GOLD PROPERTY

## Claims 240+

claims covering the historical Beauce placer gold field

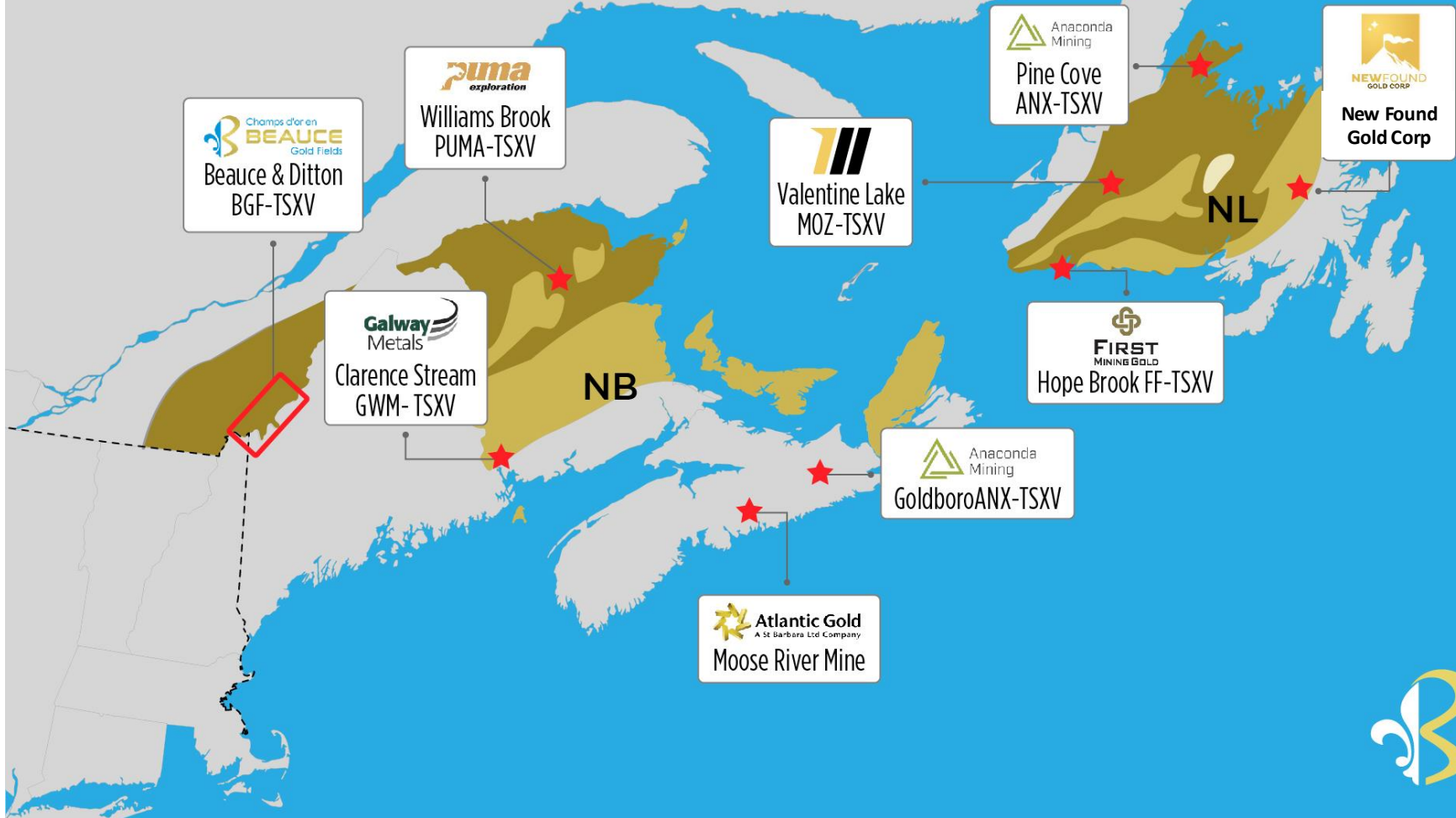
## Real Estate

Company owns 7 lots, 175 acres



# Dunnage and Gander Zones

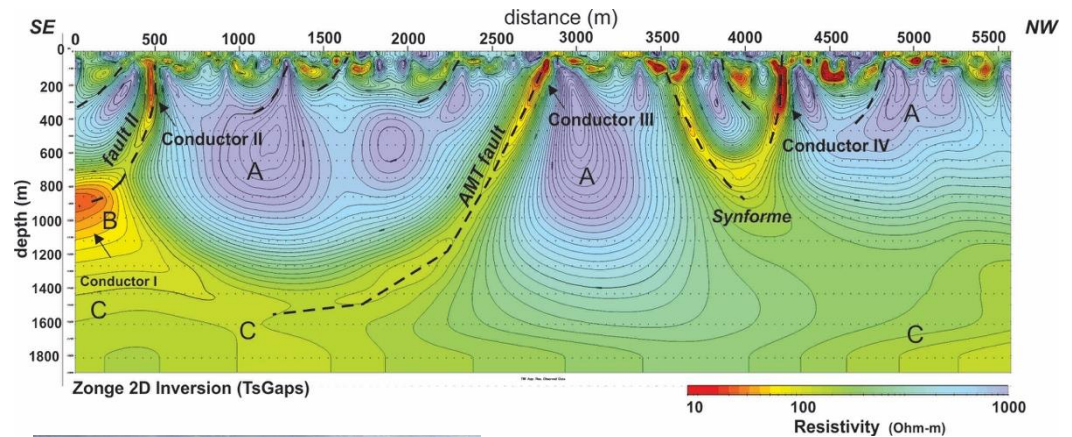
QUEBEC





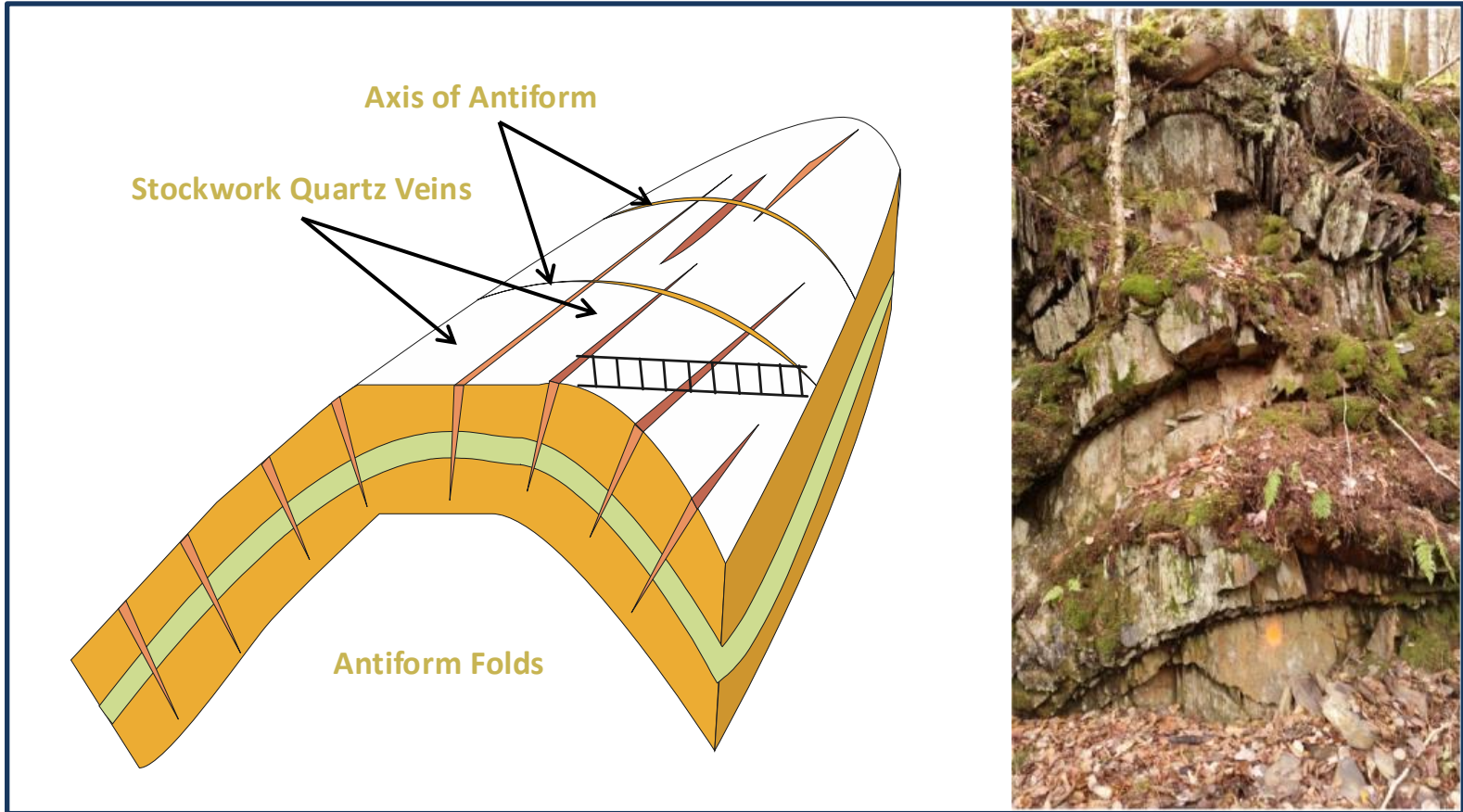
# First to extensively explore surrounding bedrock:

- More than 20 km of geophysics
- 38 drill holes
- Hundreds of rock samples
- More than 50 trenches



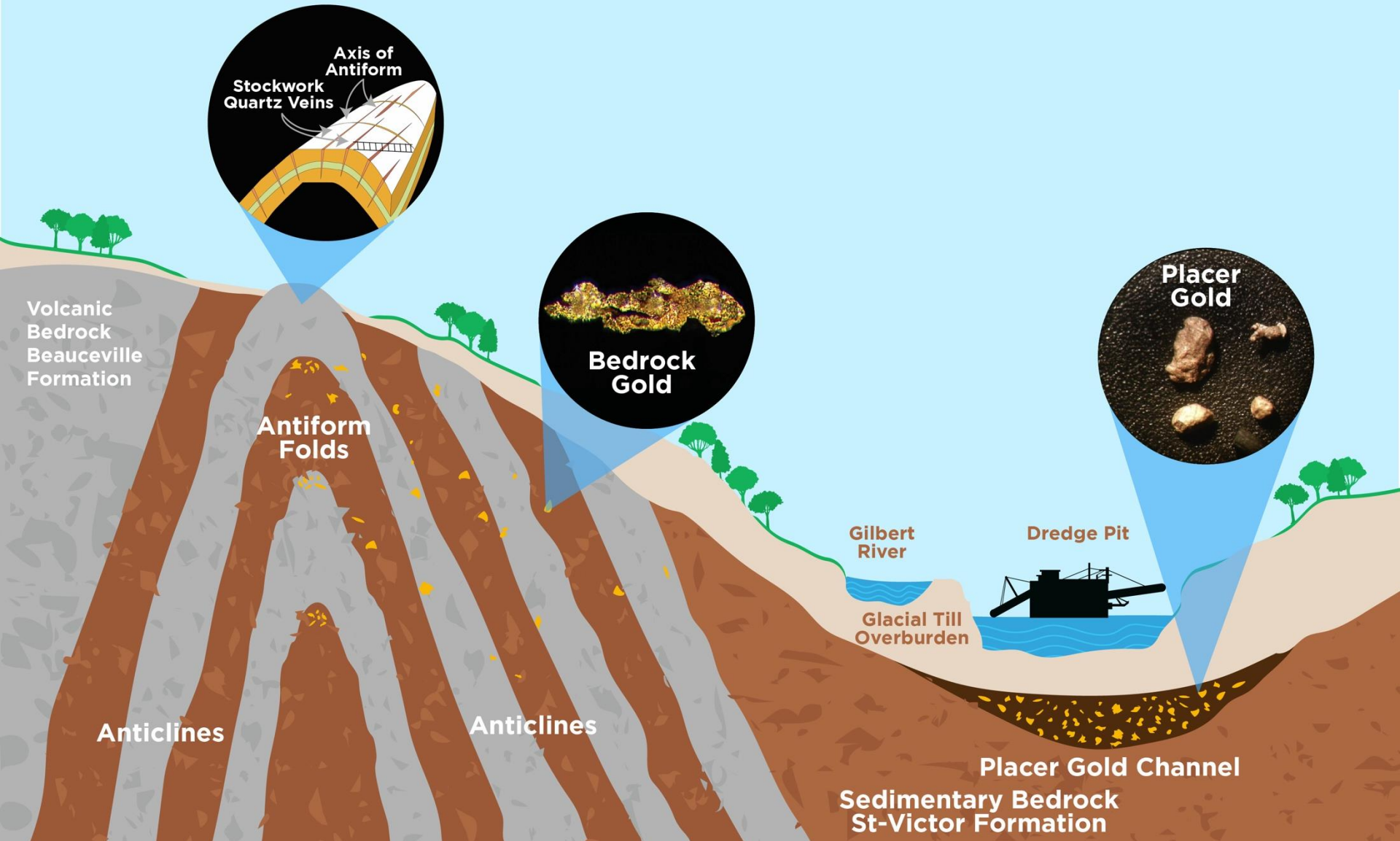
# EXPLORATION MILESTONE

## Discovery of Antiform Folds - Saddle Reef Type Formations



Proposed that nuggets & coarse gold formed in quartz vein pockets of hydrothermal breccias in the domes of Antiform Folds

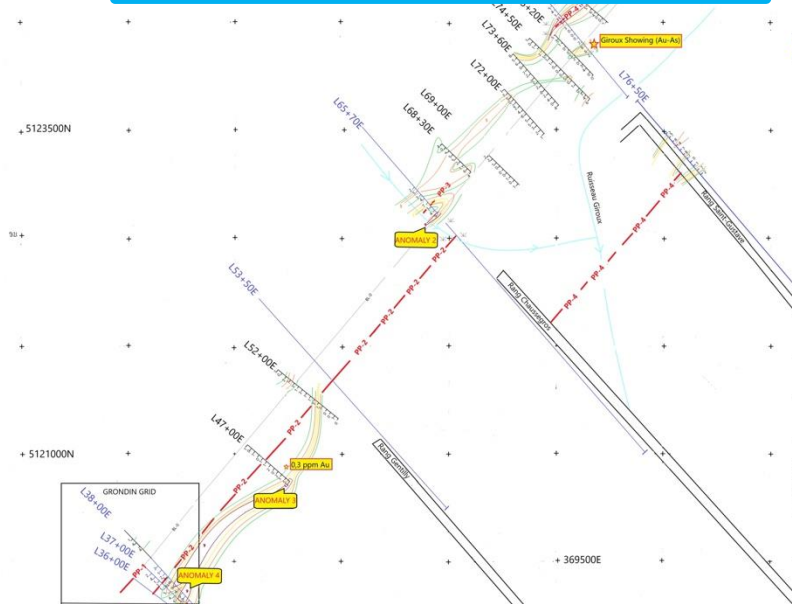
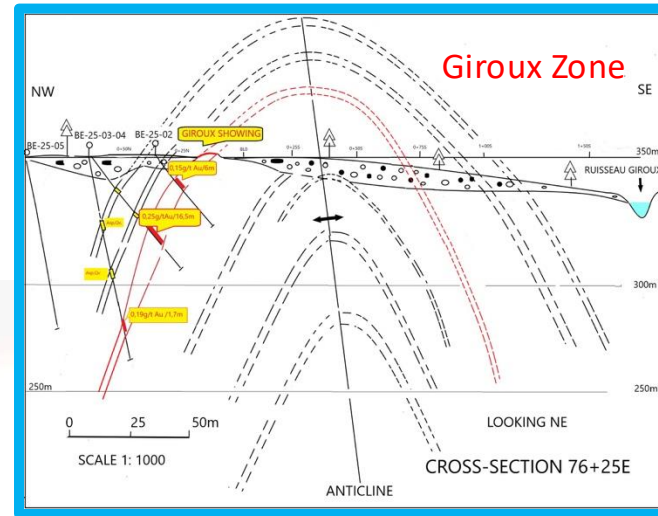
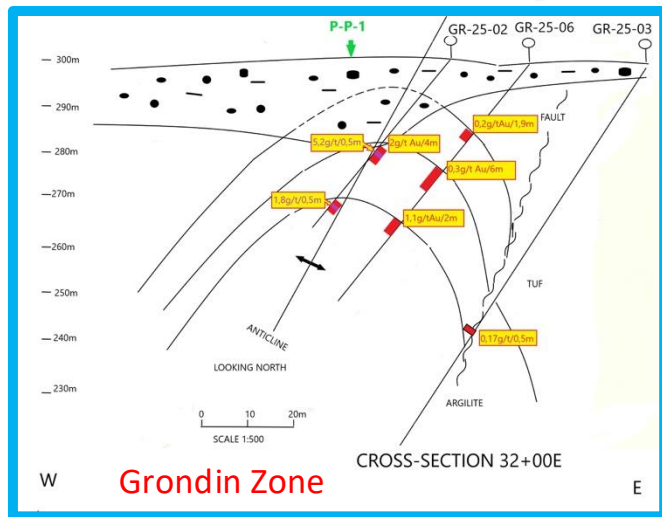
# GEOLOGICAL MODEL - SADDLE REEF FORMATION



# 2025 EXPLORATION MILESTONE

Drilling Confirms Saddle Reef Gold-Bearing Antiform Structures Mineralised for 4 KM, Possibly for 8 KM

4 km



**LEGEND**

**NUMBER OF ANOMALIC ELEMENTS**  
Ag-Au-Ba-Bi-Cd-Co-Cu-Fe-Ni-Mo-Pb-Sb-Si-V-Zn (15 Elements)

- 3
- 5
- 7
- 9

**INDUCED POLARIZATION (IP GEOSIG SURVEY)**

- PP-1 (IP ANOMALY)

**ANOMALY 1** SOIL ANOMALY

- MARSH
- RANGE
- ISOCOLOUR
- GEOCHEMICAL LINE
- GEOPHYSIC LINE
- N/A NOT ANALYSED

**Champs d'or en BEAUCE Gold Fields**

Projet / Project:  
RESULTS OF SOIL GEOCHEMISTRY AND GEOPHYSICS SURVEYS

**GRONDIN GRID AND EXTENSION**

S.N.R.C. 21L02-21L07 SOIL AND IP SURVEYS  
Dessiné/Drawn: J. BERNARD, P. GAGNON

SEIGNEURIE DE SAINT-FRANÇOIS Révisé/Revised: J. BERNARD, P. GAGNON

Echelle/Scale: 1:5000 Map 1 DEC 2024

# EXPLORATION MILESTONE

Grondin Zone – Diamond Drilling of the mineralized Antiform Structure

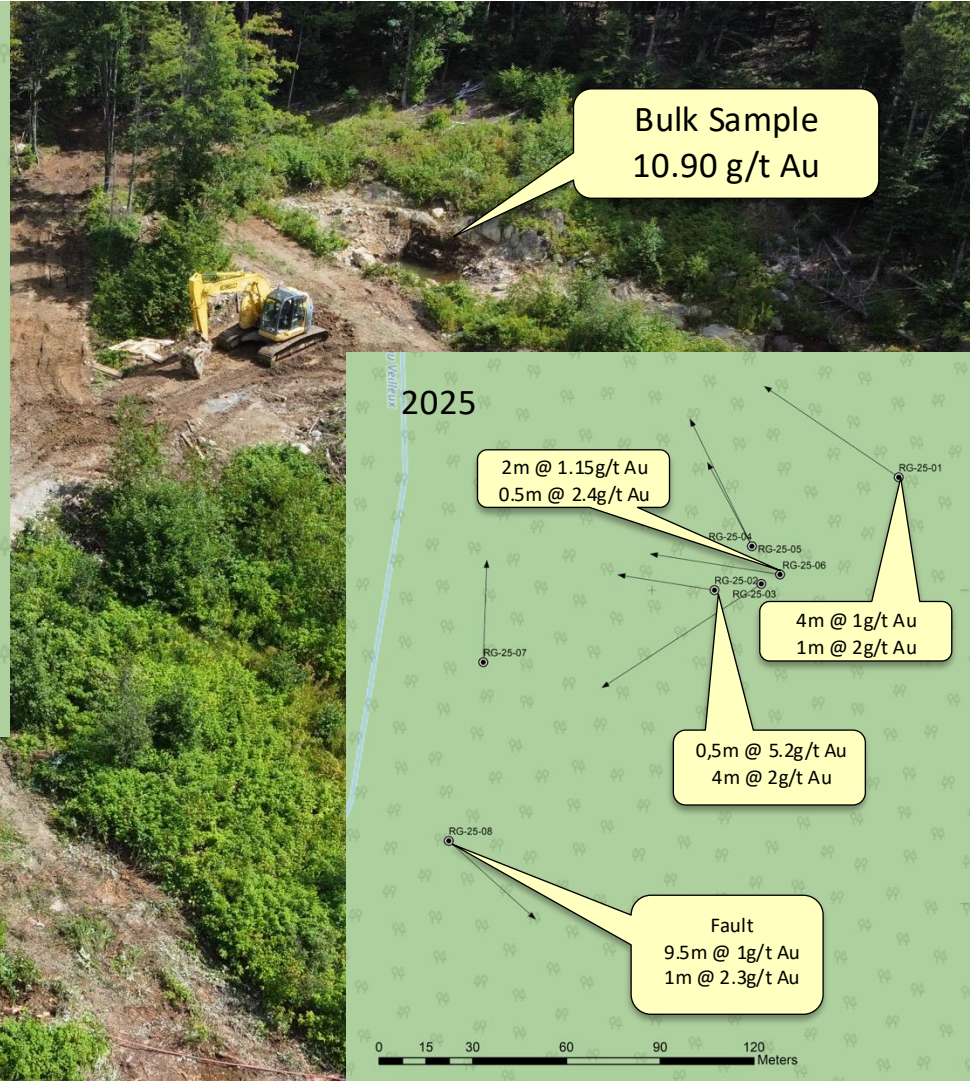
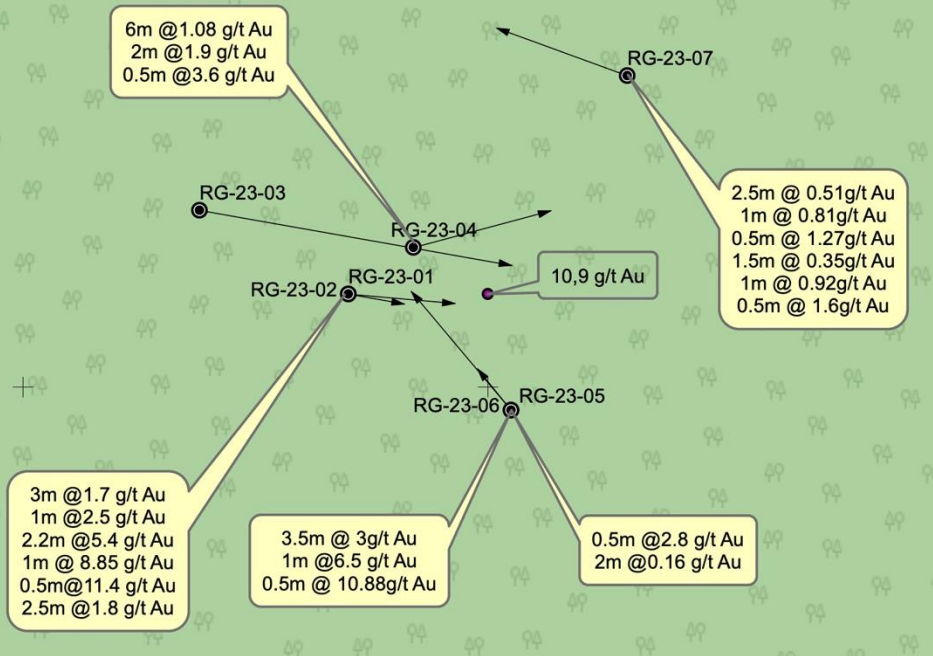


# EXPLORATION DISCOVERY



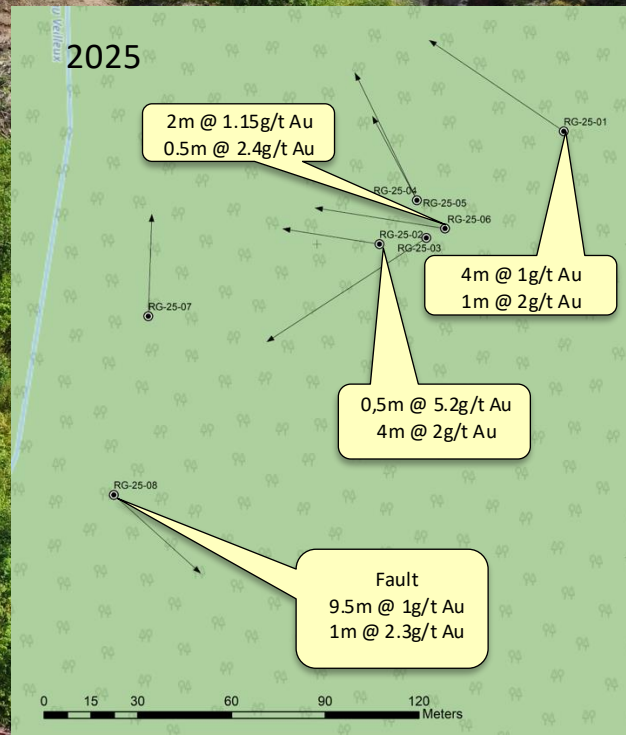
Grondin Zone – Exceptional 88% drill-hole hit ratio, far above grass roots norms

2023



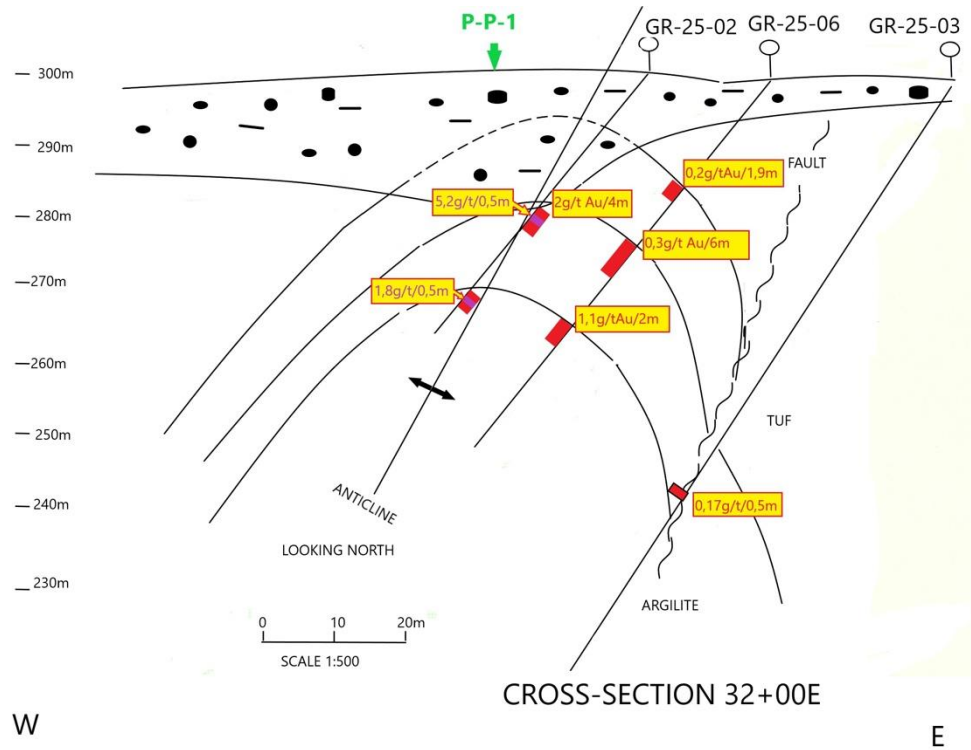
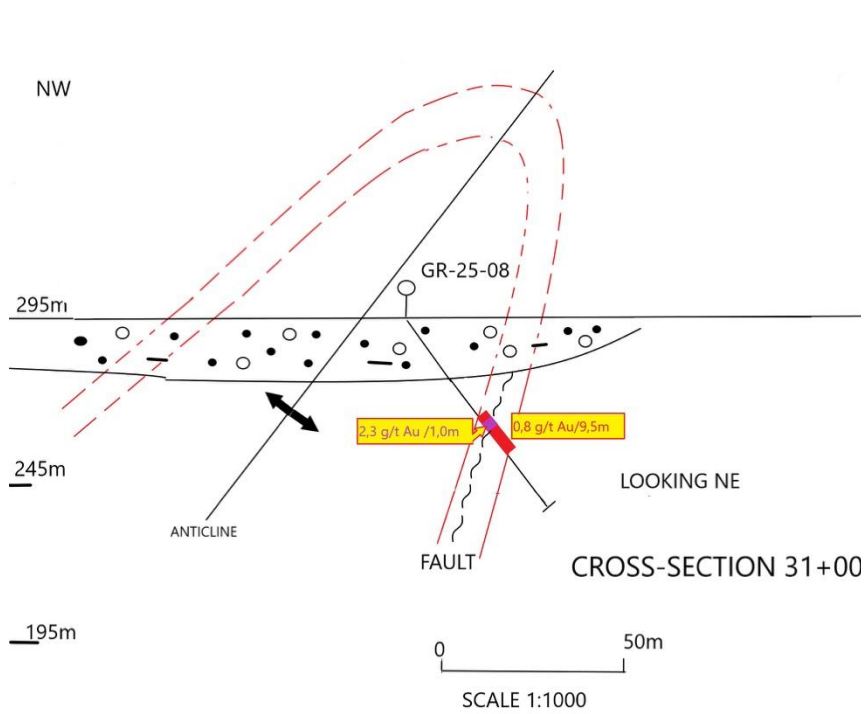
Bulk Sample  
10.90 g/t Au

2025

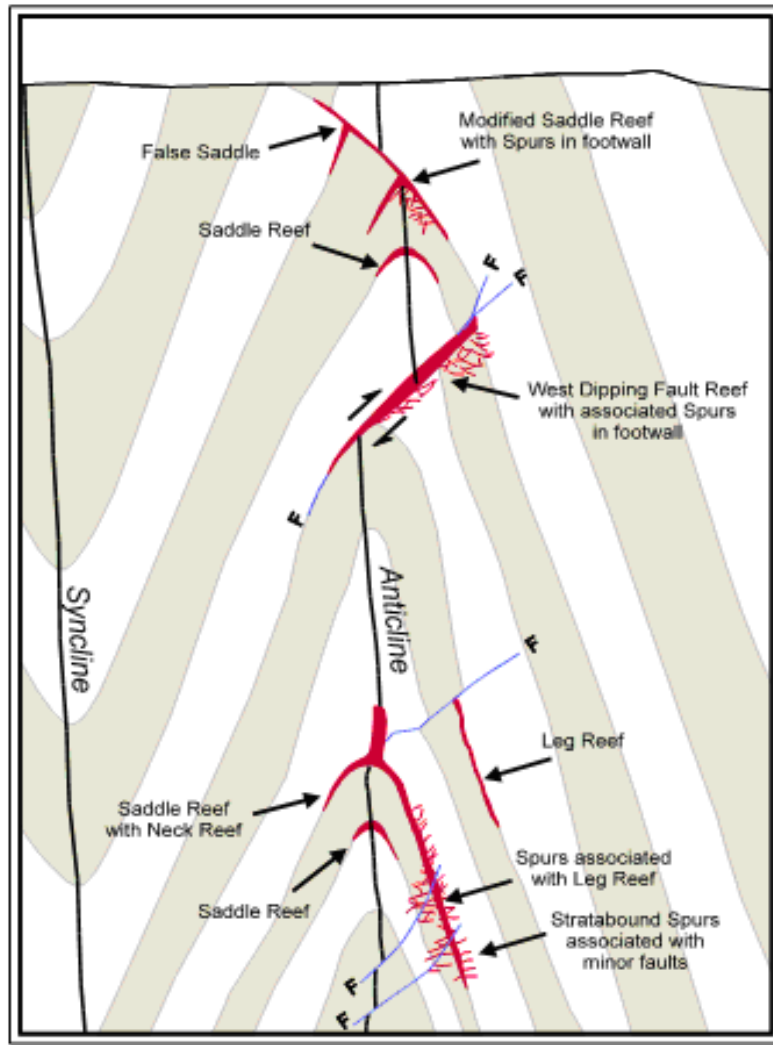


# EXPLORATION MILESTONE

## Antiform Structures Drilled – Orogenic - Stockworks in Felsic Lapilli Tuff



# 2025 EXPLORATION MILESTONE



Confirms gold across **both limbs and the fold axis,**

Matching classic saddle-reef systems globally

Geological cross-section diagram illustrating a **saddle reef system**

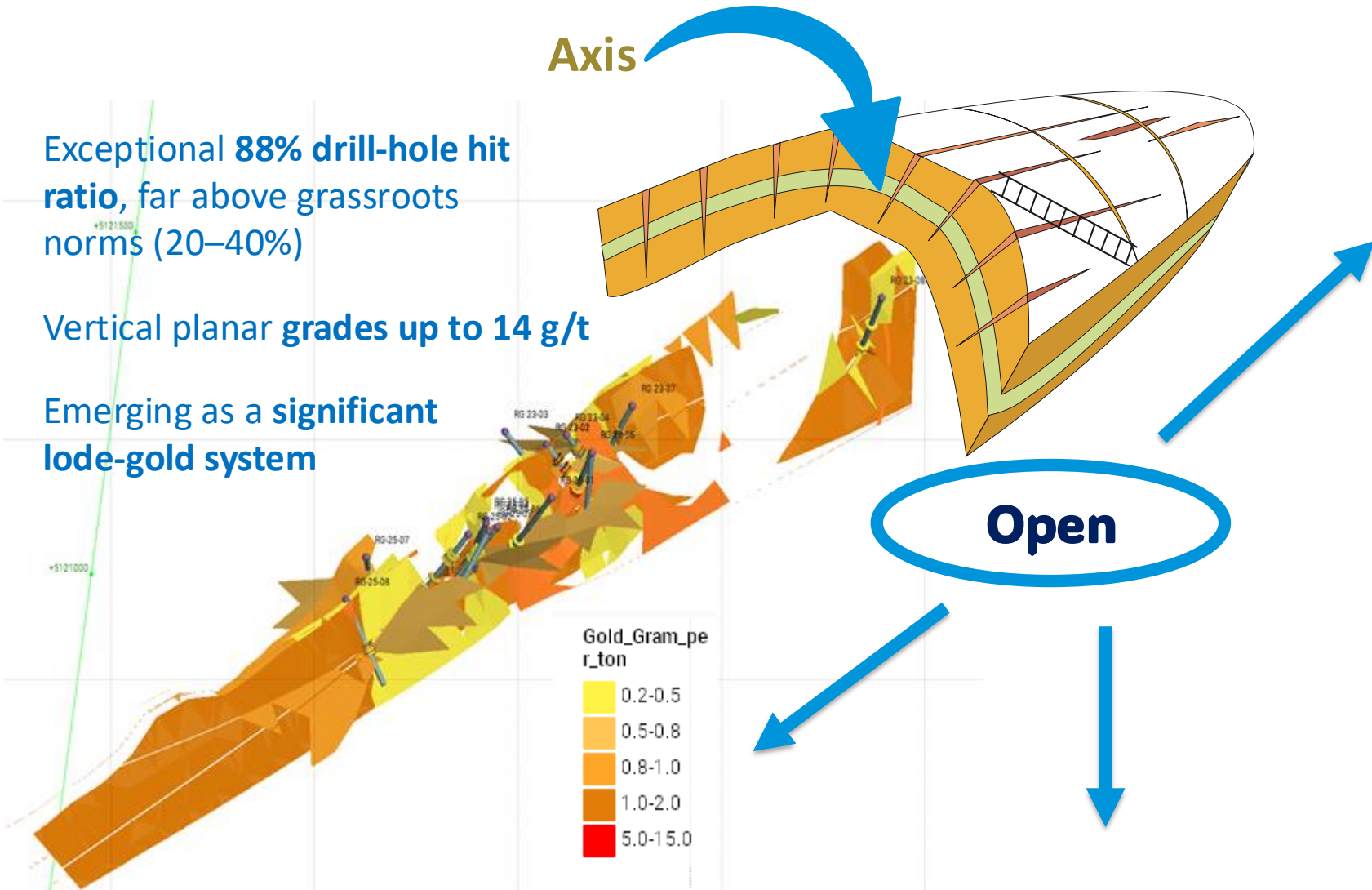
# 2025 EXPLORATION MILESTONE

## Grondin Zone 3D Model:

Exceptional **88% drill-hole hit ratio**, far above grassroots norms (20–40%)

Vertical planar grades up to **14 g/t**

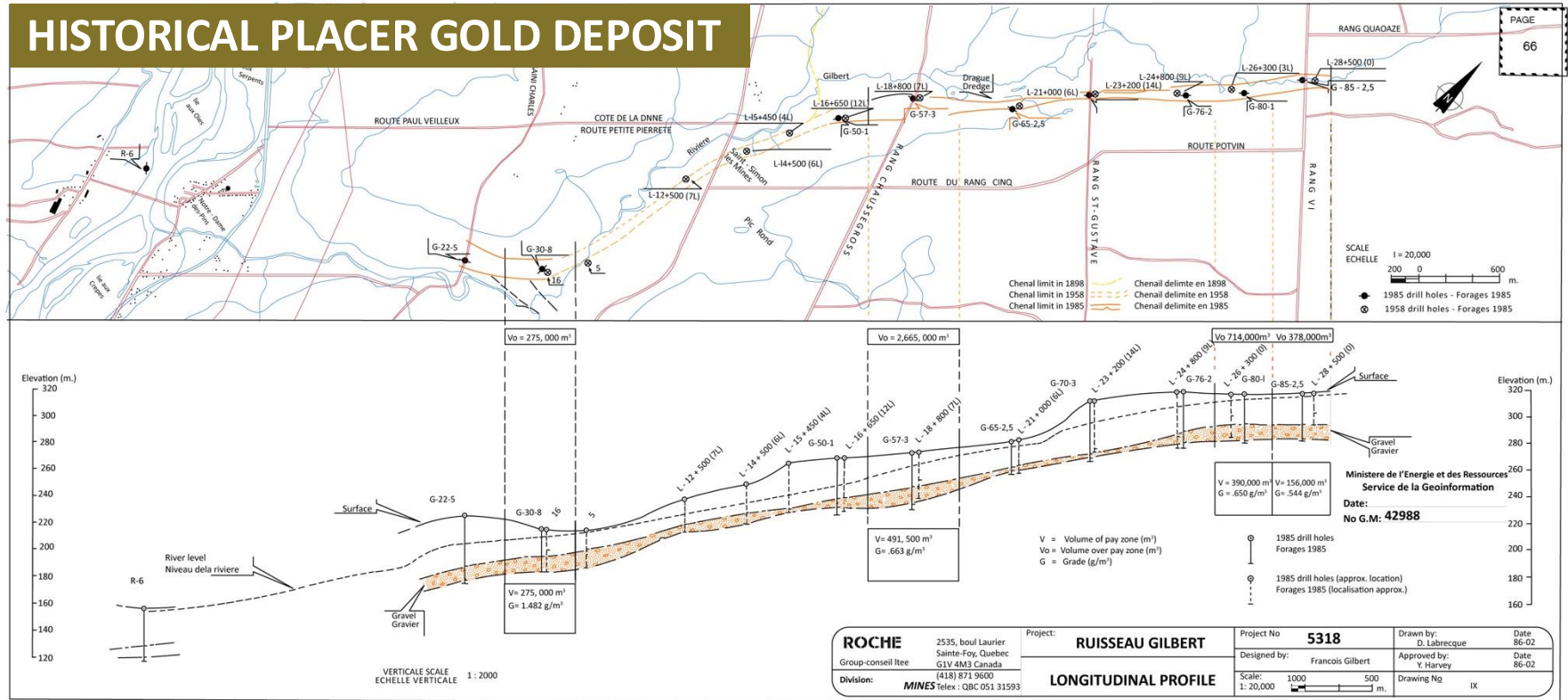
Emerging as a **significant lode-gold system**



# LARGEST HISTORICAL PLACER GOLD DEPOSIT IN EASTERN NORTH AMERICA



## HISTORICAL PLACER GOLD DEPOSIT

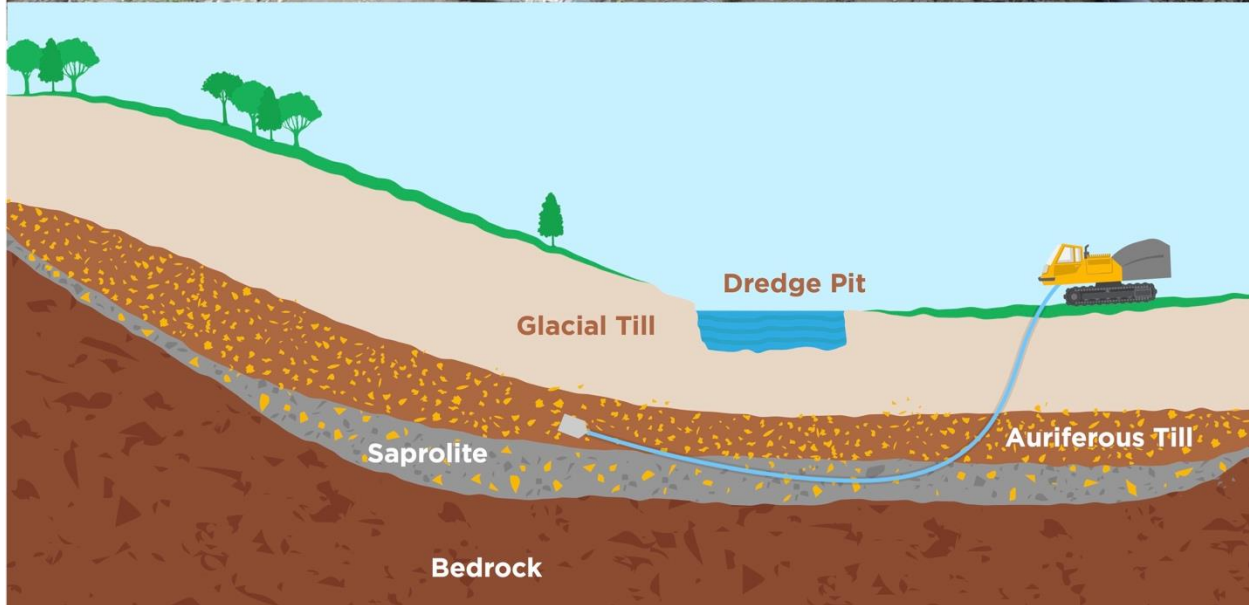


# Placer Exploration: Horizontal Directional Drilling



Adapting a technology commonly used in civil engineering projects for placer gold exploration

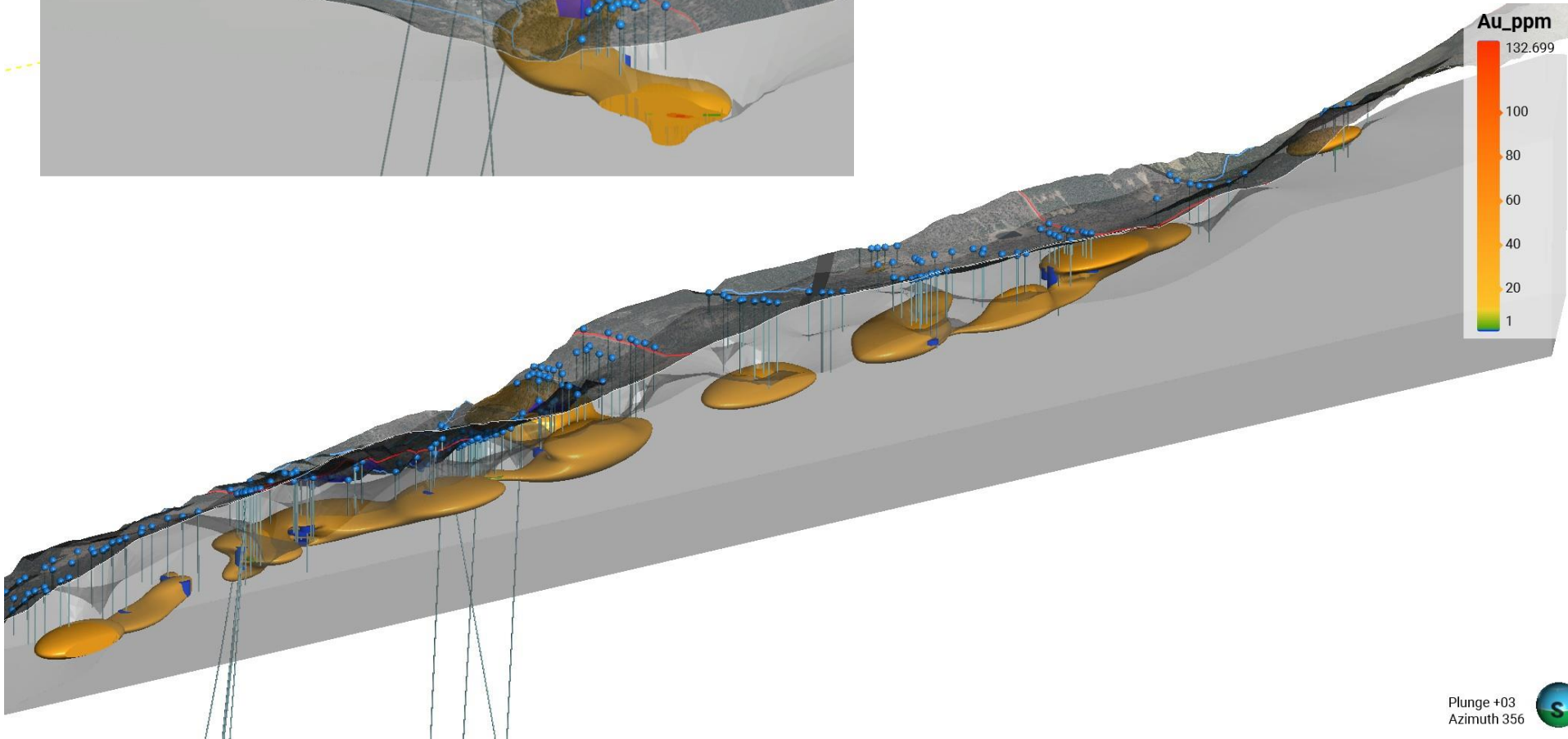
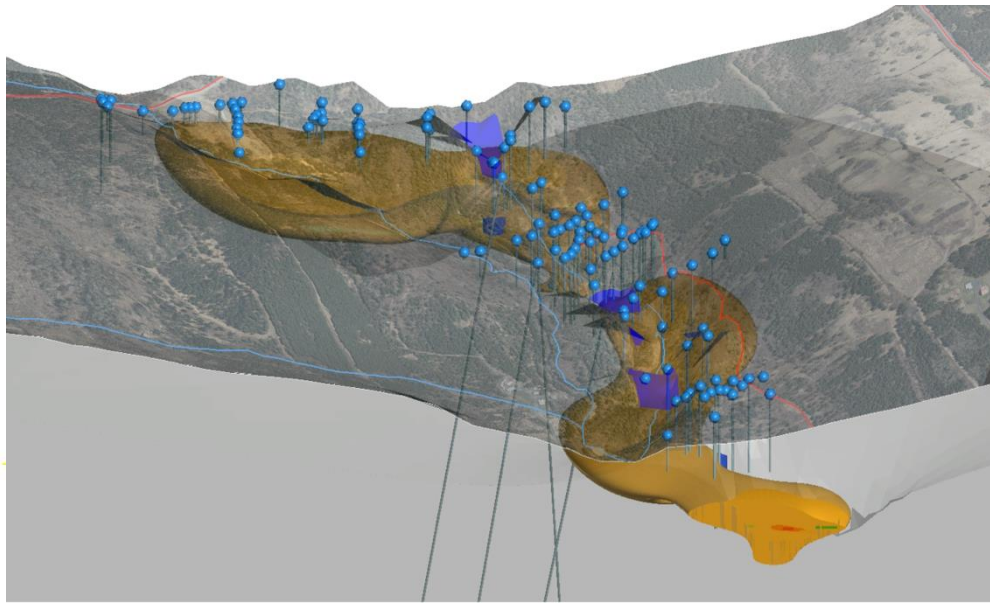
Use of horizontal direction drilling (HDD) to sample layers of auriferous till and saprolite





# SAINT-SIMON-LES-MINES PALEOPLACER

## 3D MODEL

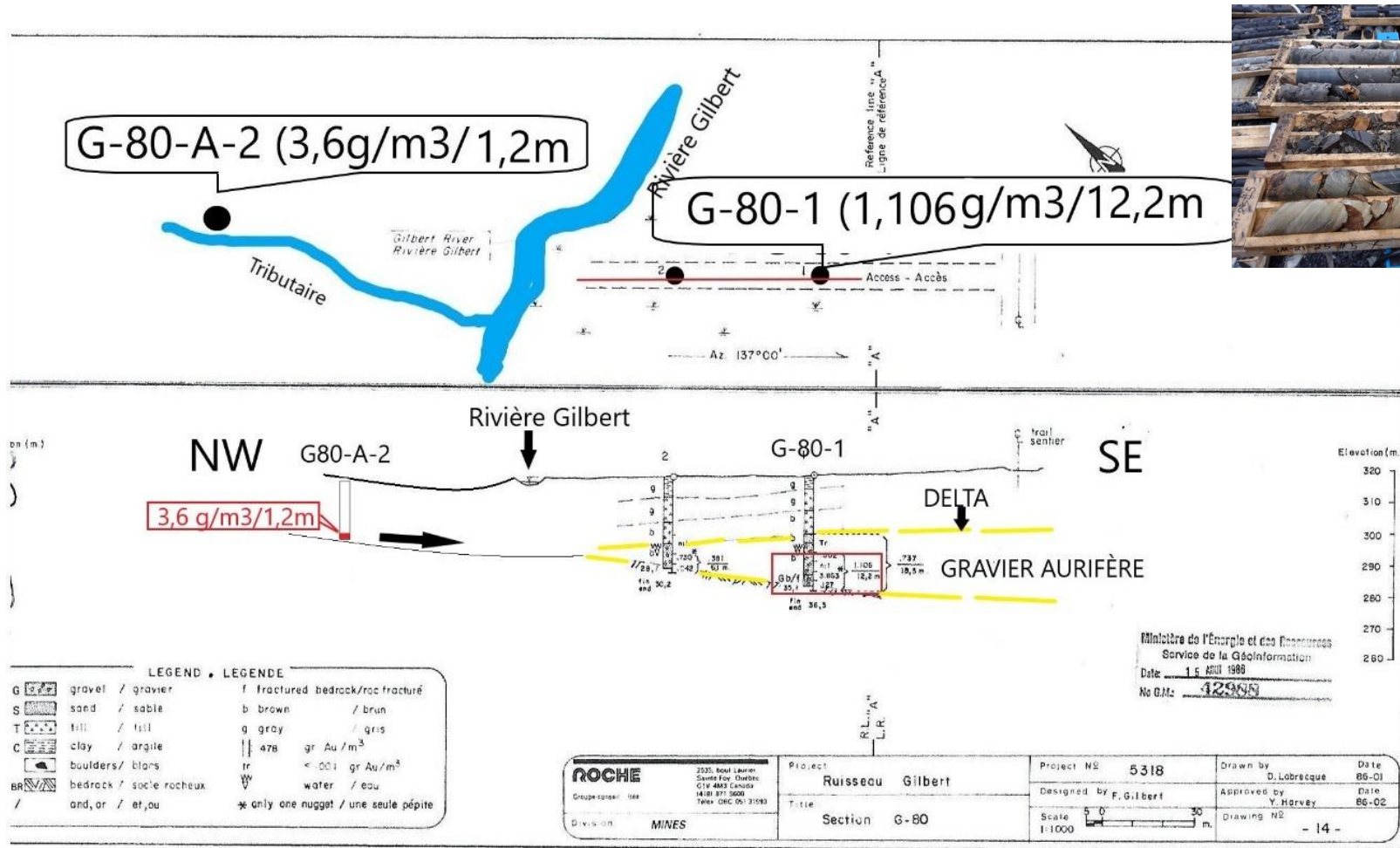


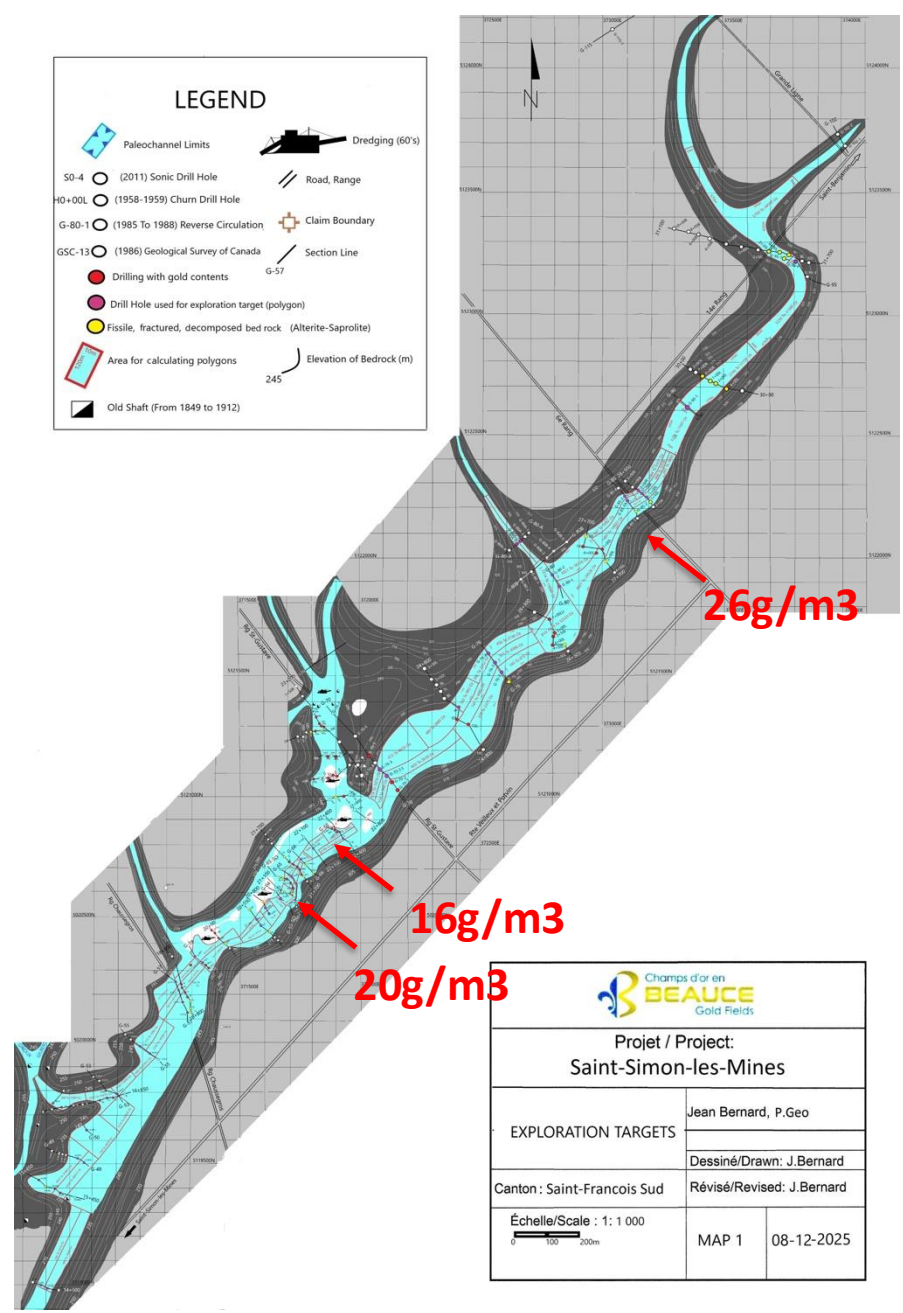
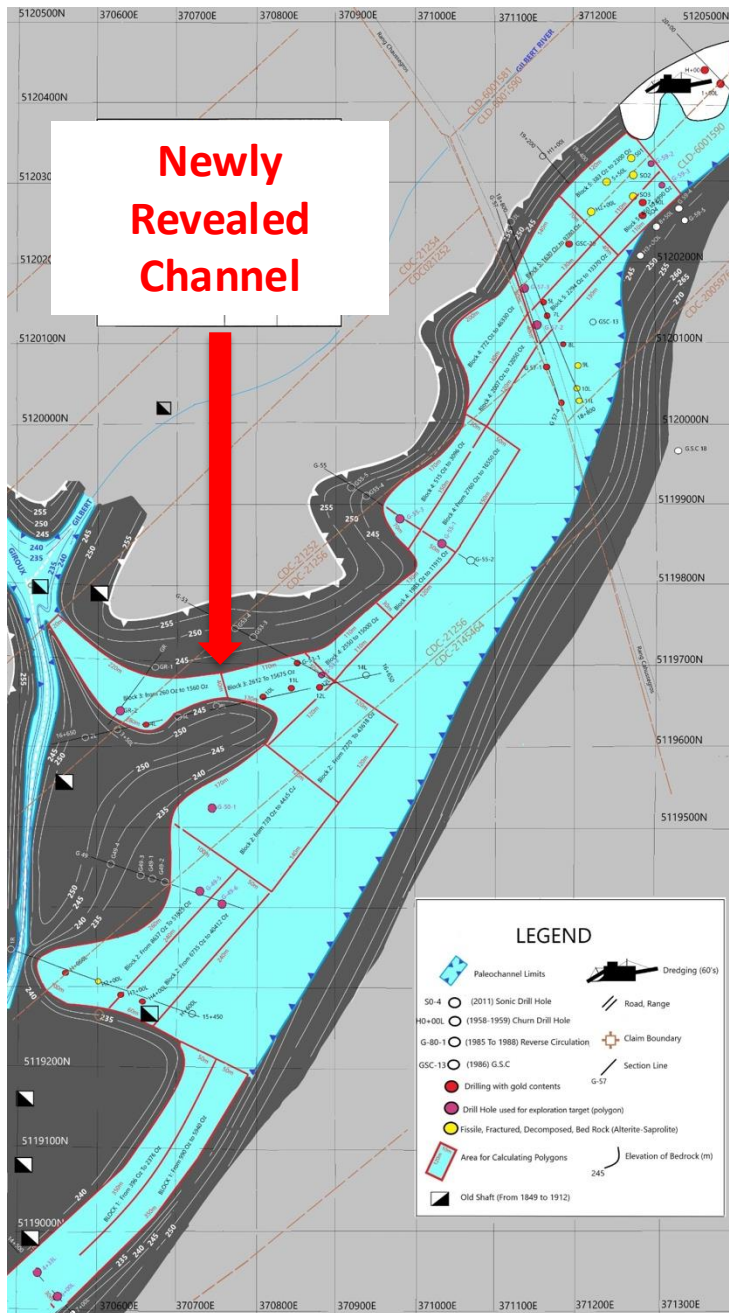
Plunge +03  
Azimuth 356





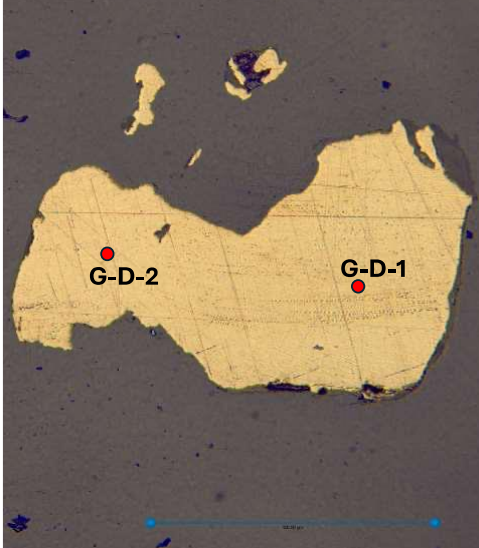
# Historical Placer Gold Deposit Underestimated: Auriferous Saprolite open laterally and at depth





# There's also SILVER..

- Drill Cores – 23%
- Antiform Gold Grains – 15%
- Placer Gold Nuggets – 13%
- 1863 Geological Survey – 13%



ROYAL CANADIAN MINT, OTTAWA

RECEIVED JAN 13 1962

Date 16 January 1962  
 MEMORANDUM of out-turn of Gold Bullion  
 Received for Refining on 3 January 1962, from Beauce Placer Mining Co. Ltd., P.O. Box 132, Beauceville, P.Q.

| MINT DEPOSIT No. | DEPOSITOR'S MARKS | WEIGHT          |                | ASSAY REPORT |        | FINE GOLD OZ. | FINE SILVER OZ. | GROSS VALUE                             |           |          | MINT CHARGES \$ | NET VALUE \$    |
|------------------|-------------------|-----------------|----------------|--------------|--------|---------------|-----------------|---|-----------|----------|-----------------|-----------------|
|                  |                   | BEFORE MELT OZ. | AFTER MELT OZ. | GOLD         | SILVER |               |                 | GOLD \$                                 | SILVER \$ | TOTAL \$ |                 |                 |
| 225              |                   | 146.400         | 142.550        | 819.75       | 108.   | 116.855       | 15.40           | 4,271.10                                | 16.85     | 4,287.95 | 17.25           | 4,270.70        |
|                  |                   |                 |                |              |        |               |                 | Handling charge @ 11¢ per oz. fine gold |           |          |                 | 12.85           |
|                  |                   |                 |                |              |        |               |                 |   |           |          |                 | <u>4,257.85</u> |

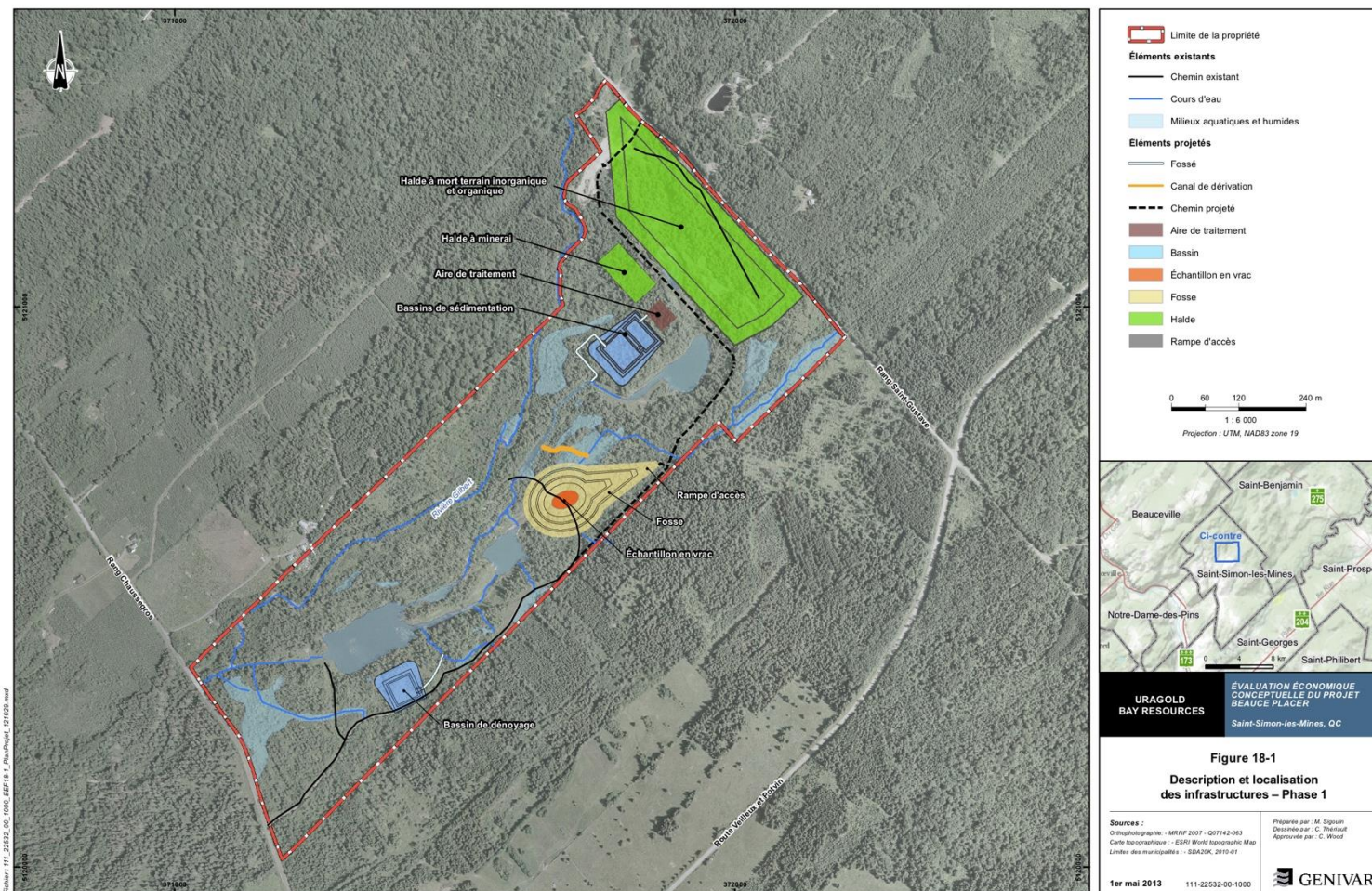
Cheque & one copy of Report to Beauce Placer Mining Co. Ltd., Suite 908 - 330 Bay St., Toronto, Ont.  
 One copy of Report to Beauce Placer Mining Co. Ltd., P.O. Box 132, Beauceville, P.Q.

/sp

*[Signature]*  
 Master

M.O.F. 23

# Objective: Placer Gold Mining Advance Project to a Mining Lease





SADDLE REEFS  
BEAUCE VS BENDIGO



**Bendigo region of Australia, which has so far produced 22 million ounces of gold, holds astonishing historical similarities to the Beauce**

# BENDIGO vs BEAUCE

Placer gold found unexpectedly



**1851**

Gold nuggets discovered by women washing clothes in Bendigo creek

Bendigo

Beauce

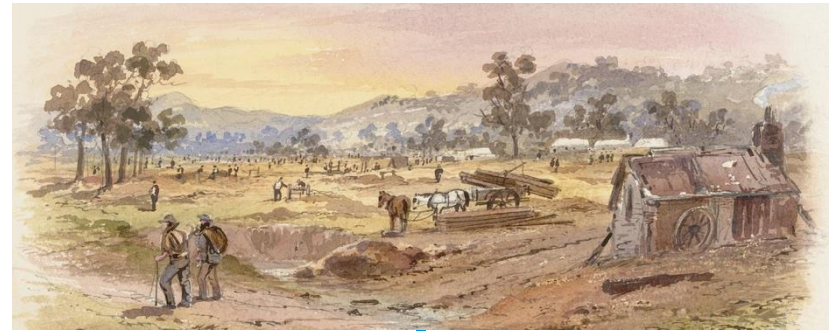


**1847**

Gold nugget discovered by Clothide Gilbert as she walked her horse across the Gilbert creek

News led to a placer gold rush

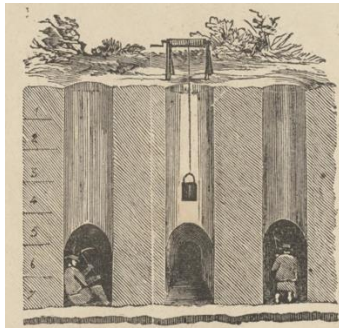
1850s – Rapid expansion of alluvial mining with of thousands of miners working



# BENDIGO vs BEAUCE

As surface alluvial gold ran scarce, miners dug deep shafts and tunnels to get to richer placer gold deposits

Both regions produced some of the largest gold nuggets



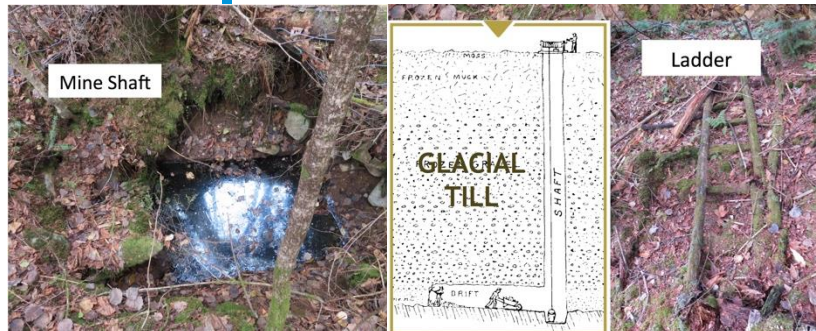
Section of a Gold Mine At the Bendigo Diggings



**1869**  
the Welcome Stranger Nugget over **2,520 troy ounces**

Bendigo

Beauce



**1866**  
McDonald Nugget **45 ounces**

# BENDIGO vs BEAUCE

By the early **1910s**, gold production petered out

The Saddle Reefs – are quartz structures that formed in the anticlines of the folded bedrock. Believed to be the source of the gold placers



Underground placer and lode gold (Saddle Reefs) mines



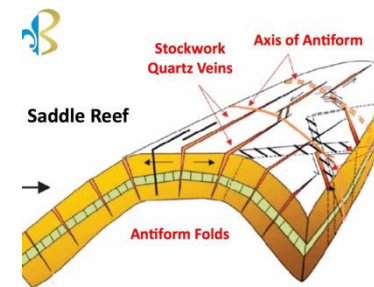
Bendigo Saddle Reefs proved to be incredibly rich in gold and were mined extensively from the 1850s onward

Bendigo

Beauce



Placer gold mines



In 2021, Beauce Gold Fields discovers Saddle Reef formations

# BENDIGO vs BEAUCE

Today



## Fosterville Gold Mine, Bendigo

The Fosterville mine is a high-grade, low-cost underground gold mine.

Bendigo

Beauce



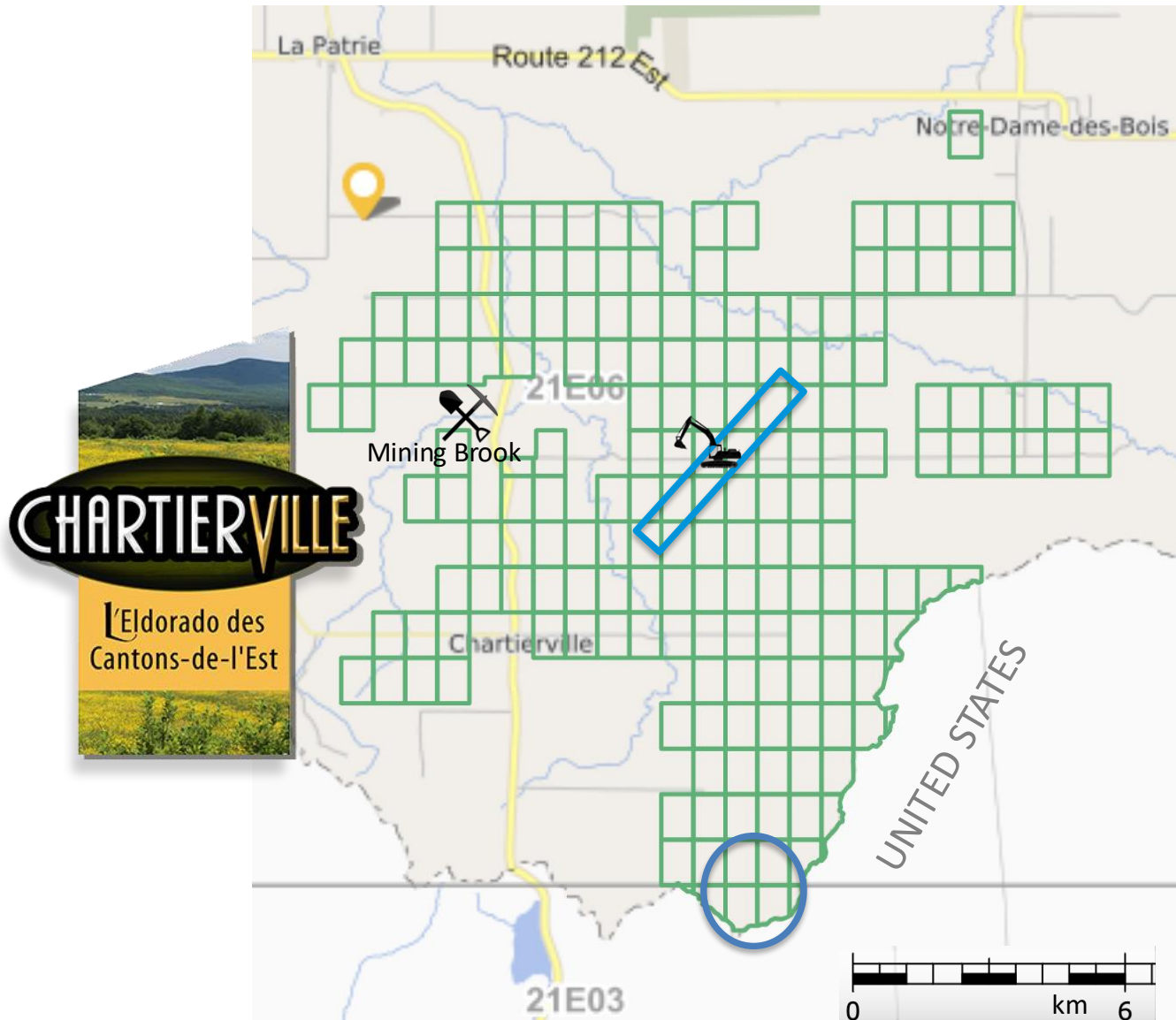
## Beauce Gold

**Fields** drill program discovered a high-grade gold anticline structure of a Saddle Reef outcrop.

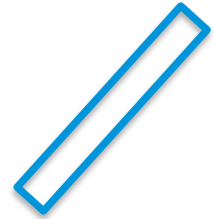
# DITTON PROPERTY



# DITTON PROPERTY – CLAIM BLOCK



Sand & Gravel Quarry



Paleoplacer Channel



Emberton Property

# DITTON PROPERTY

- Gold discovered in the late 1800s by Archibauld “Archie” Annance. An Abinaki First Nations businessman and prospector.
- Late 19<sup>th</sup> century placer gold district
- Important potential for lode gold discoveries
- Up to 2g/m<sup>3</sup> Au dredged from sand pits
- Historical placer gold deposits along Bella Fault line
- Potential placer gold production



The Ditton property is located in southern Quebec limited to the southwest by the American border of New Hampshire.

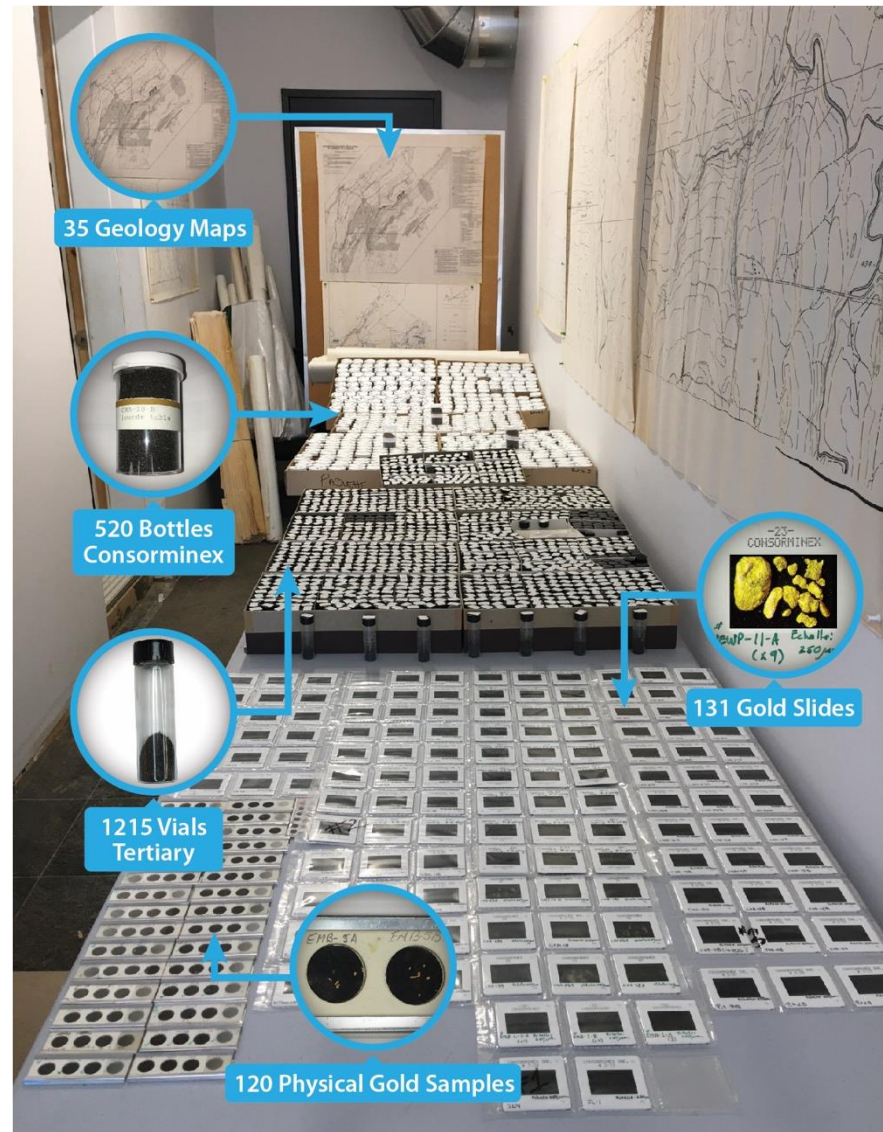
The property extends for at least 10 km along the axis of the Bella Fault. It is divided into three historic placer gold districts: the Ditton, the Mining Brook & Emberton.

The Bella fault line, which is the major structural element of the Ditton property, is in contact between the Compton and Frontenac Formations. Observations suggest several intrusive phases that would be favorable to the establishment of gold mineralization.

# DITTON PROPERTY

Never-before-published  
historical exploration data

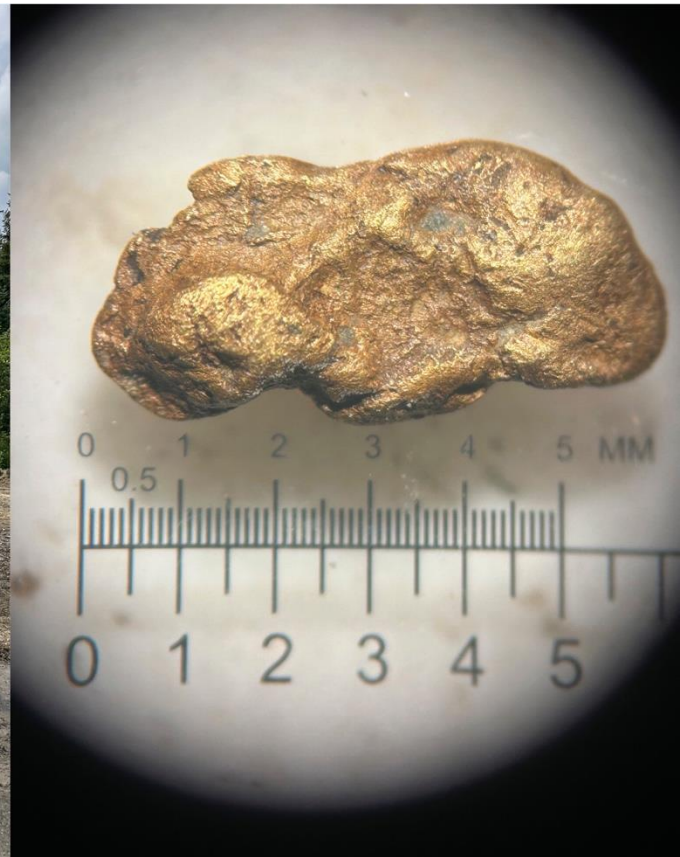
- Acquired from a local Prospector
- 1,700 Concentrates
- 120 physical gold samples
- 120 maps





# Ditton Exploration 2022 - 2023

10 Sonic Drill Holes, 180 Bulk Samples and 4 Lines of Geophysics



# DITTON: Tertiary and Quaternary Placer Gold



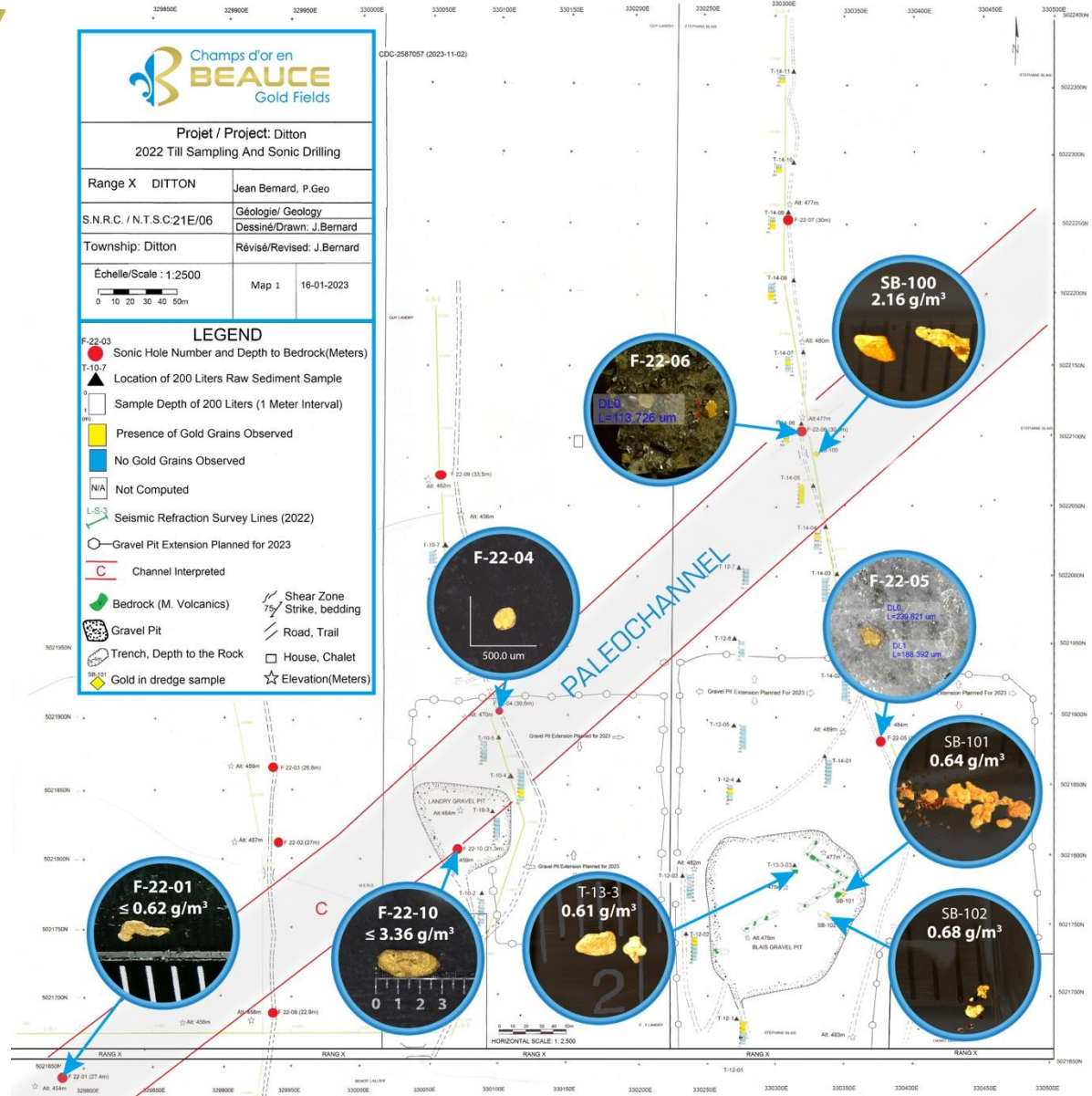
# DITTON PROPERTY

2022 exploration results confirms gold anomaly in paleoplacer channel

Placer channel open to the South, East, SW & NE

Placer gold identified in both Tertiary & Quaternary deposits

Placer gold potentially derived from a proximal lode gold source



# DITTON PROPERTY - Potential Placer Gold Production

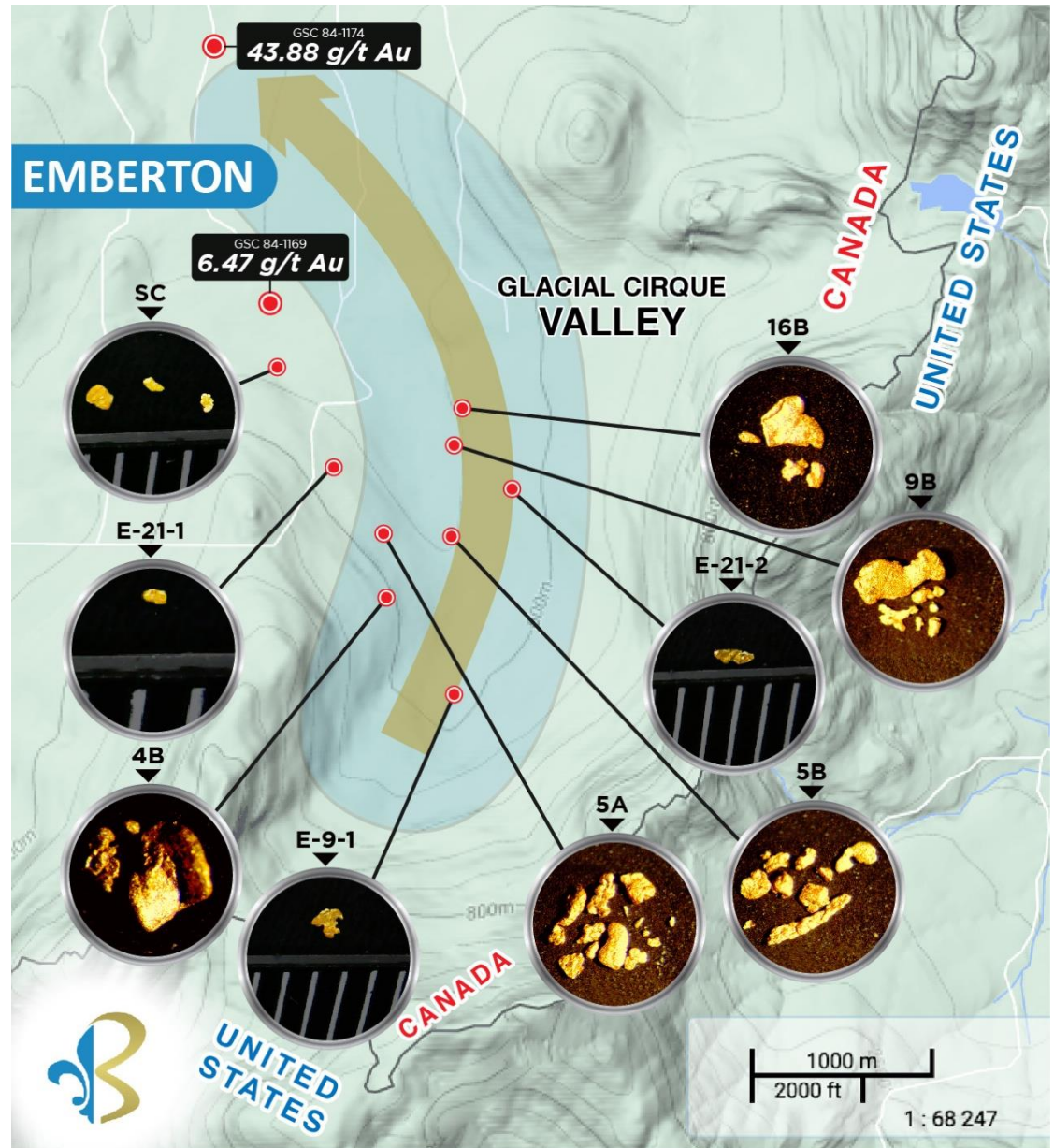
## Low Capex, requires only gravity & water



# EMBERTON

## New Discovery

- Gold over a 4 KM Dispersal Trail
- Large Gold Grains
- Unexplored Potential



# STRONG SOCIAL ACCEPTABILITY

A community proud of its gold mining heritage



A St-Simon-les-Mines Town Hall Presentation

For the last 10 years, Patrick Levasseur has built strong local relationships and has garnered community support for BGF

With each opportunity, BGF hires talented people from the community and has always prioritized the purchase of goods and services from local businesses

# CAPITAL STRUCTURE

Shares Outstanding: 138,684,193

## Ownership:

President & CEO 7.45%

HPQ Silicon 4%

Insiders 2%

Spin-Out of



IPO: February 2019

## Management & Directors

**PATRICK LEVASSEUR:** President & CEO, Director

**BERNARD J. TOURILLON,** B.A.A, MBA – Chairman, Director

**ROBERT GAGNON – P. GEO –** Director,  
Geologist, President Explomine

**ANN LEVASSEUR, B.COM,- CIM – Director**  
Portfolio Manager, Investment Advisor

**FRANCOIS RIVARD - CFO**

**JEAN BERNARD – P.Geo Geologist**

IPO February 2019



For more information contact

Patrick Levasseur, President & CEO

(514) 262-9239

patrick.levasseur@beaucegold.com



Loads of info on our YouTube channel  
<https://www.youtube.com/@beaucegoldfields>  
Visit and subscribe!

