

GOLD EXPLORATION IN SOUTHERN QUEBEC

TSX-V: BGF



JUNE 2023

DISCLAIMERS

This presentation includes certain “forward-looking statements”

All statements, other than statements of historical fact, included herein, including, without limitation, statements regarding future plans and objectives of the company, are forward-looking statements that involve various risks, assumptions, estimates and uncertainties, and any or all of these future plans and objectives may not be achieved.

These statements reflect the current expectations or beliefs of Beauce Gold Fields. (“the Company”) and are based on information currently available to the Company. There can be no assurance that such statements will prove to be accurate, and actual results and future events could differ materially from those anticipated in such statements. All of the forward looking statements contained in this presentation are qualified by these cautionary statements and the risk factors described above. Furthermore, all such statements are made as of the date this presentation is given.

An investment in the Company is speculative due to the nature of the its business. The ability of the Company to carry out its plans as described in this confidential presentation is depending on obtaining the required capital. There is no assurance that the Company will be able to successfully raise the capital required or to complete each of the growth initiatives described. Investors must rely upon the ability, expertise, judgment, discretion, integrity and good faith of the management and Board of the Company.

Reference materials source:

NI 43-101 HPQ Report Beauce Gold,
Histoire d’or en Beauce, Drouin 2007
Obalski 1898, Richer-Lafleche 2017 - 2021

Reference to historical gold figures in this entire presentation do not comply with the CIM reporting standards National Instrument 43-101 for mineral resources or reserves and should not be relied upon. While the Company considers these historical estimates to be relevant to investors as it may indicate the presence of mineralization, a QP for the Company has not done sufficient work to classify the historical estimates and Beauce Gold Fields is not treating these historical estimates as a current mineral resource

WHY BEAUCE GOLD FIELDS?

- Near term placer gold producer
- Working towards lode gold discoveries

We want to know, where did all this gold come from?



CAPITAL STRUCTURE

Shares Outstanding: 55,607,209

Ownership:

HPQ Silicon 6%

Insiders: 15%

Institutional: 8%

Spin-Out de HPQ Silicon 



IPO: February 2019

Management & Directors

PATRICK LEVASSEUR: President & CEO, Director

BERNARD J. TOURILLON, B.A.A, MBA – Chairman, Director

ROBERT GAGNON – P. GEO – Director,
Geologist, President & CEO Pershimex Resources

ANN LEVASSEUR, B.COM,- CIM – Director
VP Investment Advisor Laurentian Bank Securities,

LAM CHAN THO, Bsc. A., Eng. MBA, LLB – Director

FRANCOIS RIVARD - CFO

JEAN BERNARD - Geologist

MARC RICHER-LAFLECHE – PhD Geologist



www.beaucegold.com



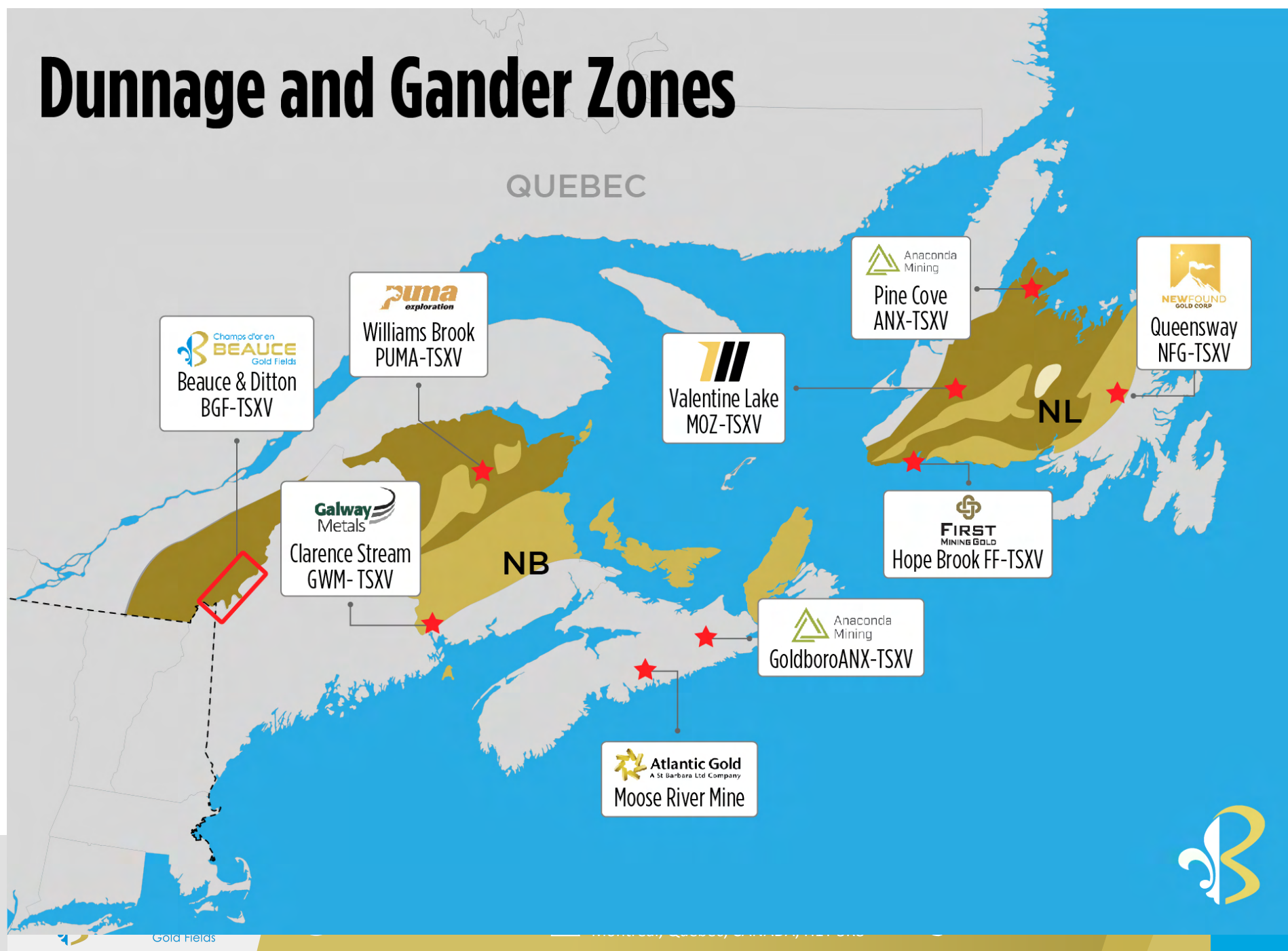
3000 Omer-Lavallée St, Suite 306
Montreal, Quebec, CANADA, H1Y 3R8



+1 514 846 3271



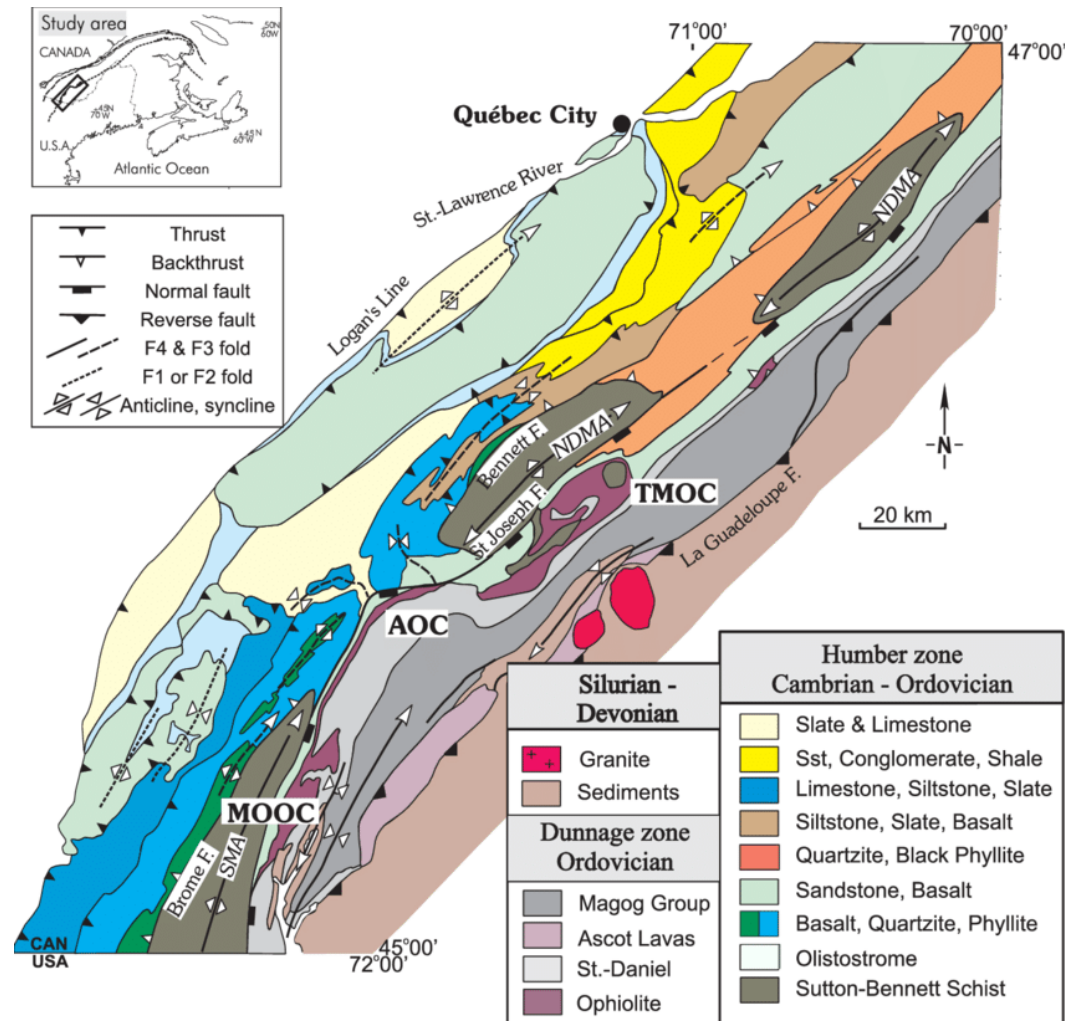
Dunnage and Gander Zones



REGIONAL GEOLOGY OF THE BEAUCE:

The Beauce gold sector straddles two of the major tectonostratigraphic subdivisions of the Appalachians. The latter, the Humber zone to the northwest and that of Dunnage to the southeast.

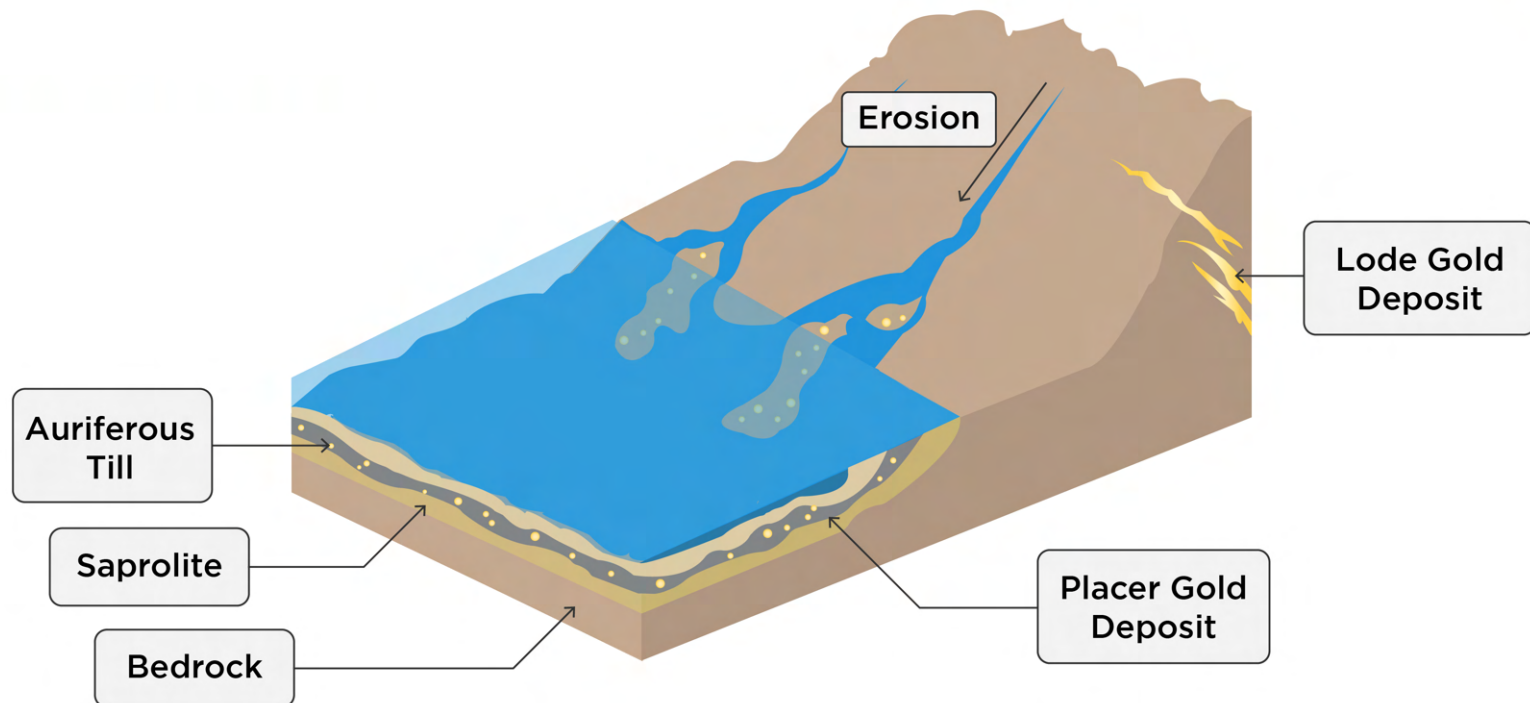
Gold mineralization mainly follows fault contacts between volcanic and sedimentary rock formations for example the Beauceville and St-Victor Formation on our Beauce Gold project or the Bella Fault contact between the Compton and Frontenac Formations found on the Megantic project



PLACER GOLD TO LODE GOLD EXPLORATION

What is Placer Gold?

It's gold that has been dislodged from a bedrock source by erosion or other forces of nature and transported to form a secondary deposit

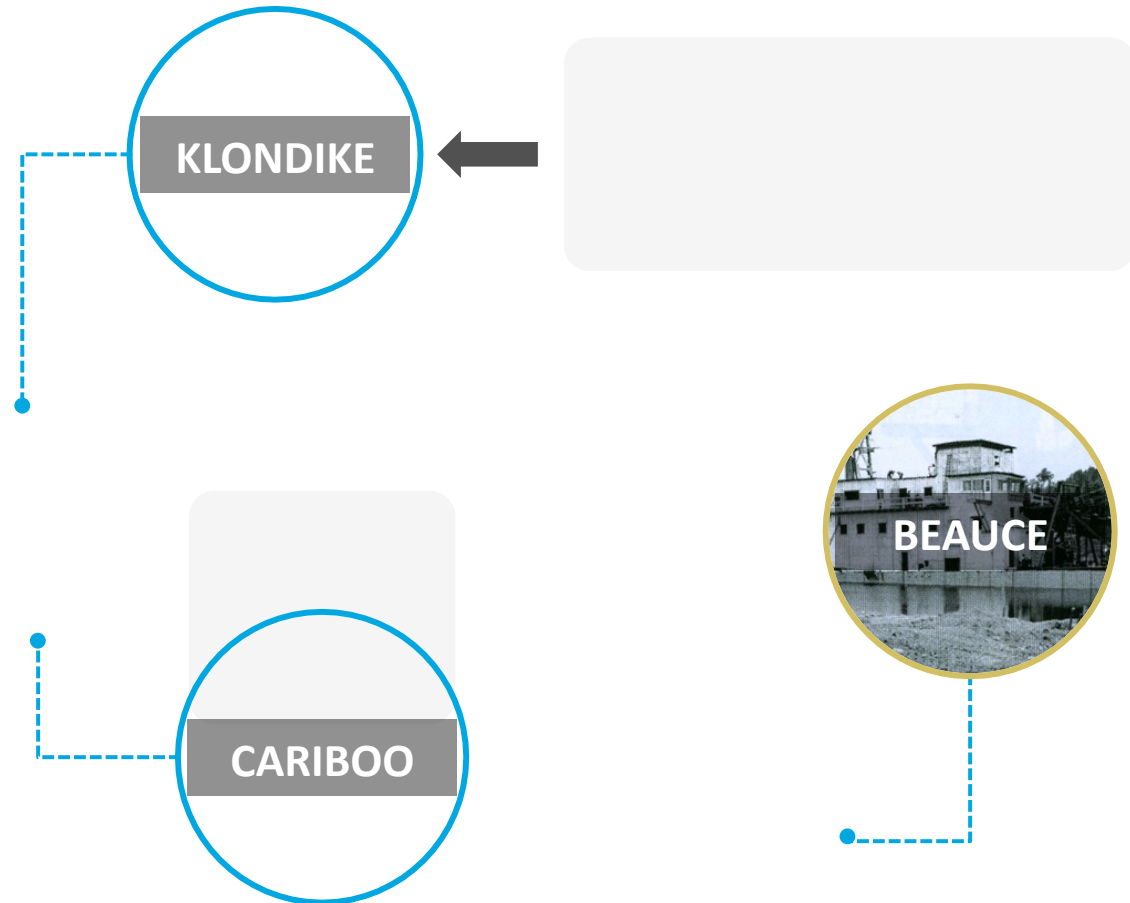


PLACER GOLD DISTRICTS IN CANADA

Recent placer to lode gold discoveries attracting majors

Beauce is the last remaining Canadian placer to hard rock gold exploration project to be explored

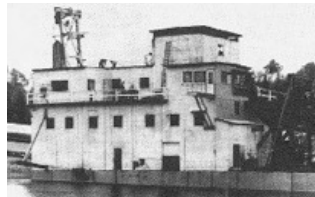
After decades of being overlooked, recent lode gold discoveries in the Yukon and BC placer fields has lead to a modern gold rush with major gold companies investing in historical placer gold properties



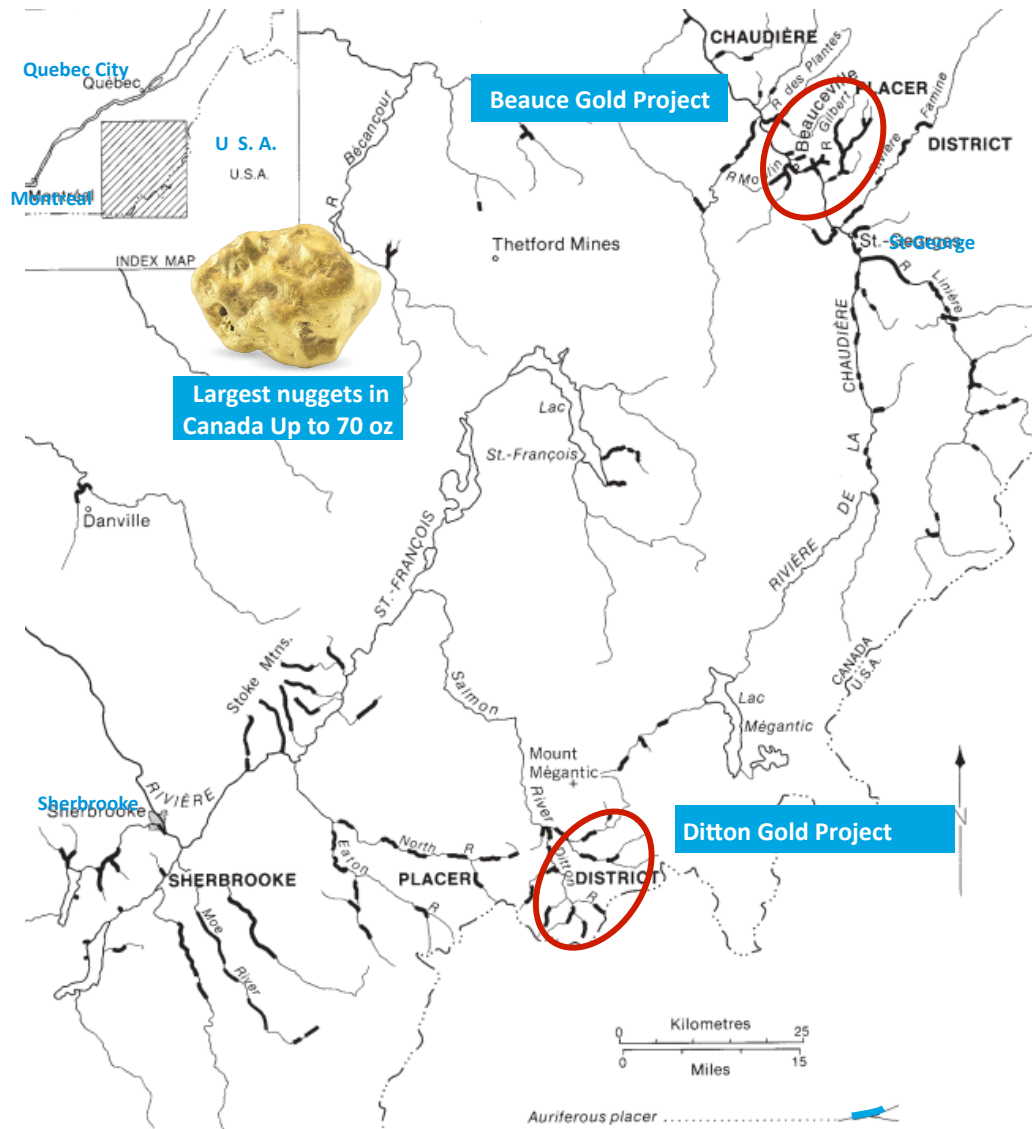
Many Firsts in Canadian Mining History



First gold rush in Canada before the Klondike



Largest Gold Dredging Operation in the East



BIGGEST BLUNDER IN CANADIAN MINING HISTORY:

100 years no gold exploration in Southern Quebec

After gold was discovered in the Beauce in 1847, Lord Charles-Joseph, the great grandson of Seigneur Chaussegros DeLery, claimed the family held patent rights to gold & silver in the Beauce. He hastened to obtain the letters patent of the government of London granting him the exclusive and perpetual control of the exploitation of all the precious metals found on the lands of his seigneurie.

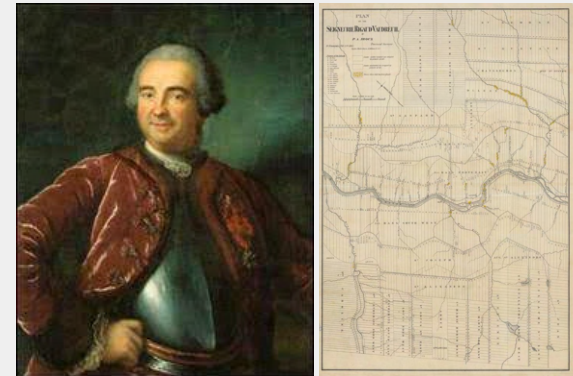
The Seigniorial system was abolished in 1854. The former tenants of the seignory in the Beauce, having obtained full ownership of their land, contested the validity of the gold patents.

The Chaussegros DeLery family imposed large royalties on miners. Lawsuits and at times violent opposition erupted between mining companies, local miners and farmers.

To prevent Seigniorial descendants from monopolizing the provinces mineral resources, the government established in 1864, the Gold Mines Act. The introduction of the concept of mineral claims brought about a real conceptual revolution. It constitutes the very foundation of the mining regime we know today.

1881, the provincial government challenged the validity of DeLery's patent in court and demanded that it be declared illegal and quashed. In 1884, the Courts upheld the DeLery family and many other gold patents rights.

Outcome, it became impossible throughout Southern Quebec for mining companies to stake claims for mineral exploration. It was only in 1985 that the provincial government took back mineral rights and made the region available for claiming.



Seigneur* Chaussegros DeLéry and map of the Rigaud Veaudreuil Seingory (Estate) today known as the Beauce

*A Seigneur was an aristocratic title equivalent to a Lord, the Seigniorial system was a feudal system of land ownership before the British invasion of New France (Quebec) in 1759.

Chaussegros DeLery family VS Miners & Farmers



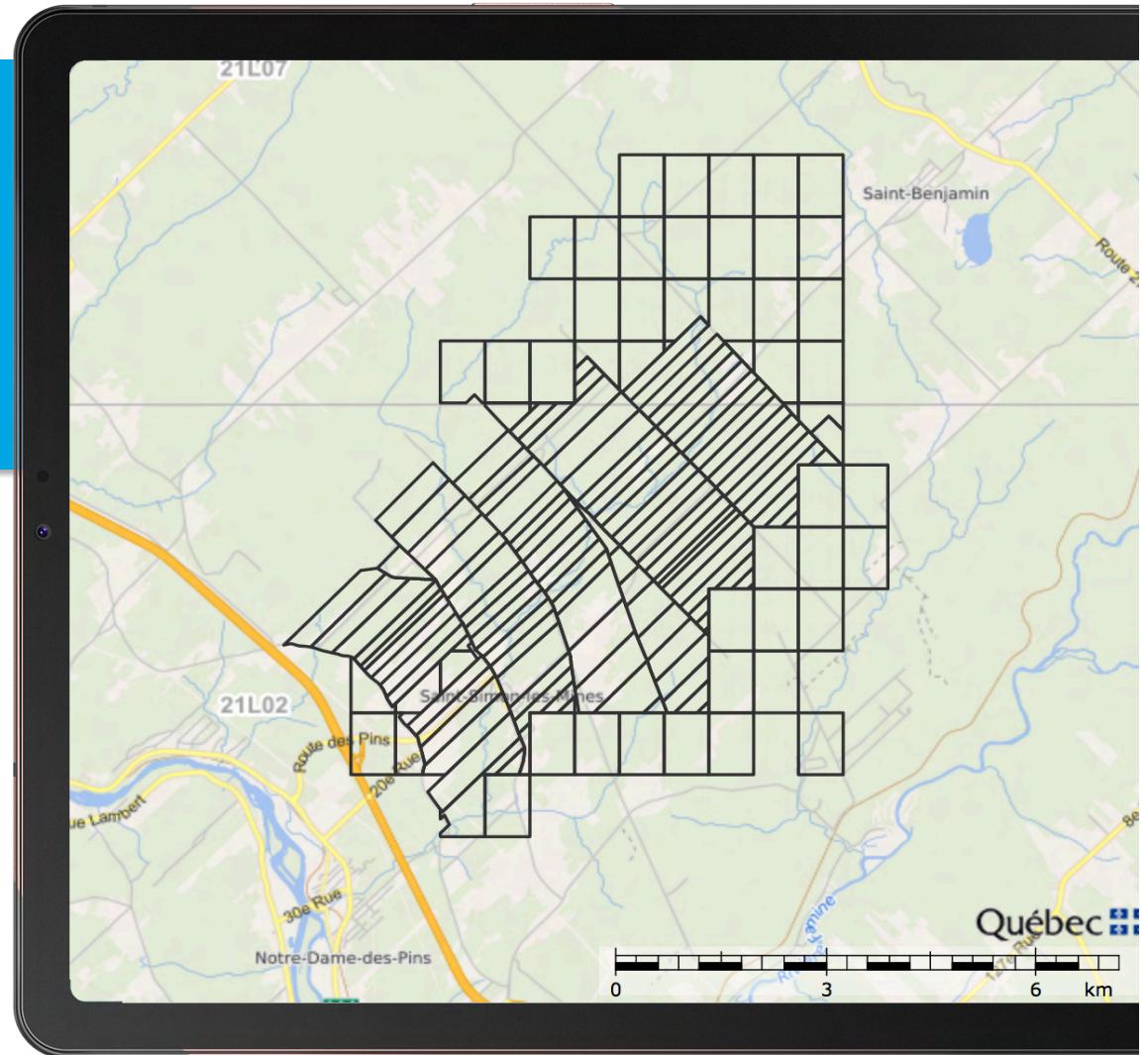
BEAUCE GOLD PROPERTY

152+

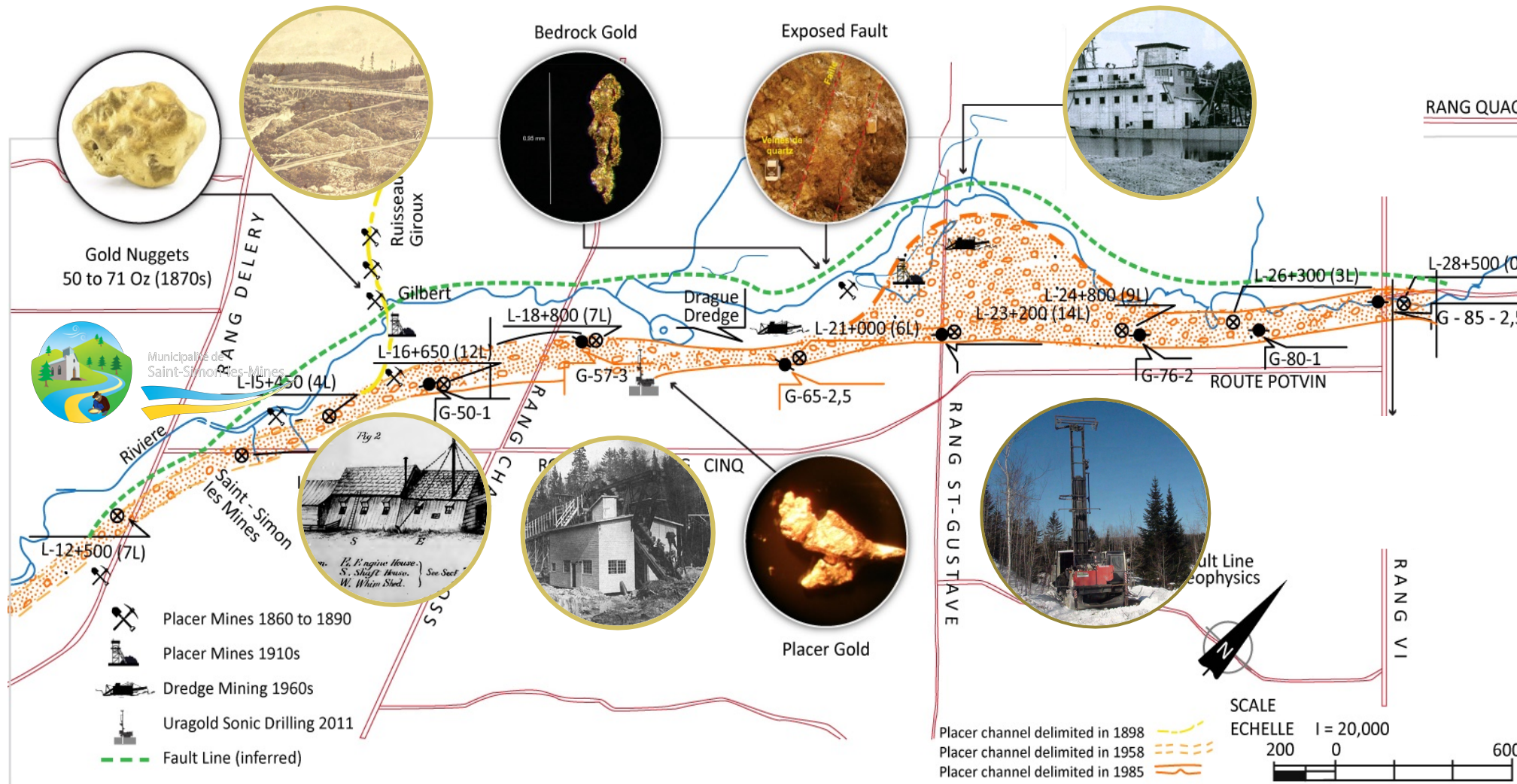
claims covering the historical
Beauce placer gold field

175 acres

(7 lots) of real estate



BEAUCE GOLD PROPERTY: 176 Years



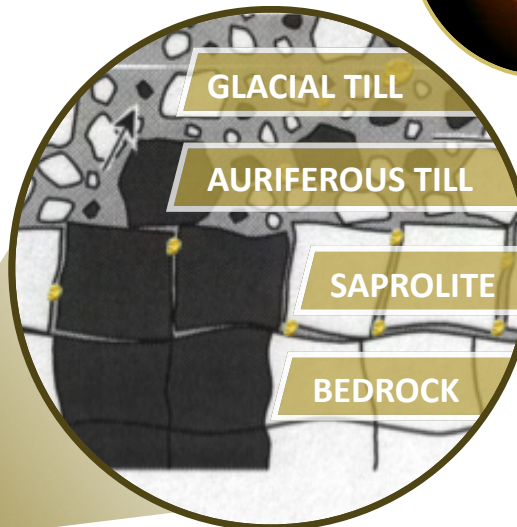
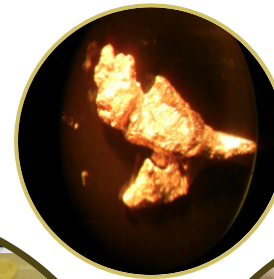
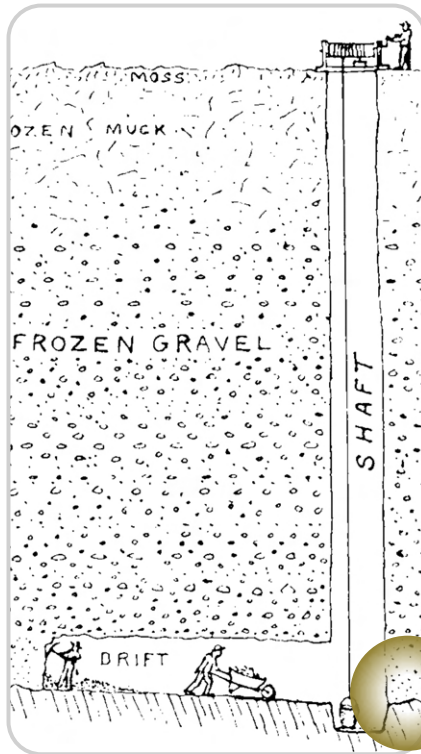


PLACER MINED UNDERGROUND

NOT alluvial gold. The historically mined placer gold deposit sits in units of saprolite and a diamictite (auriferous) till covered by a glacial till overburden

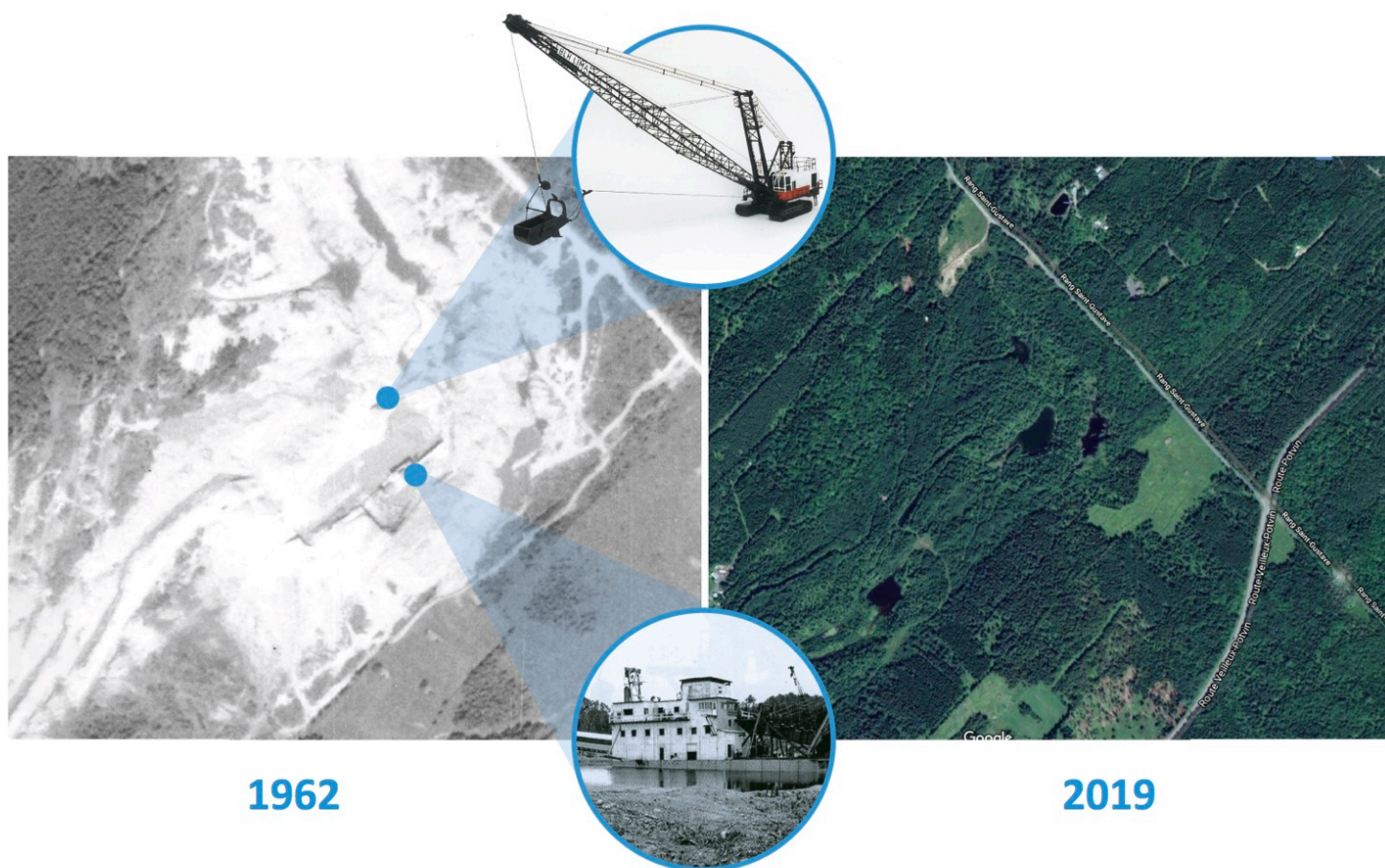
6 KM OF TUNNELS!

AURIFEROUS TILL & SAPROLITE



LARGEST PLACER GOLD MINING OPERATION IN EASTERN NORTH AMERICA

STRIPPING & DREDGING

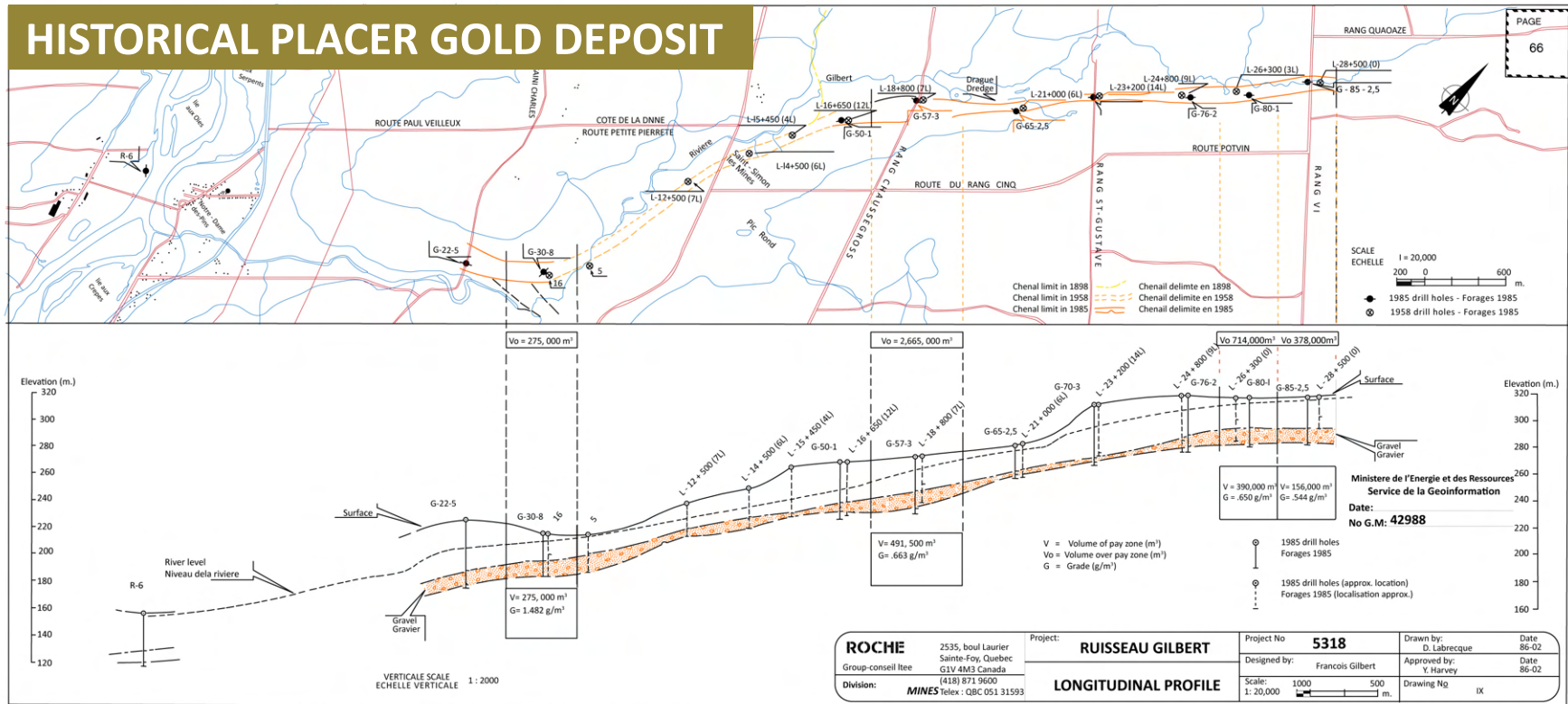


1962

2019

LARGEST HISTORICAL PLACER GOLD DEPOSIT IN EASTERN NORTH AMERICA

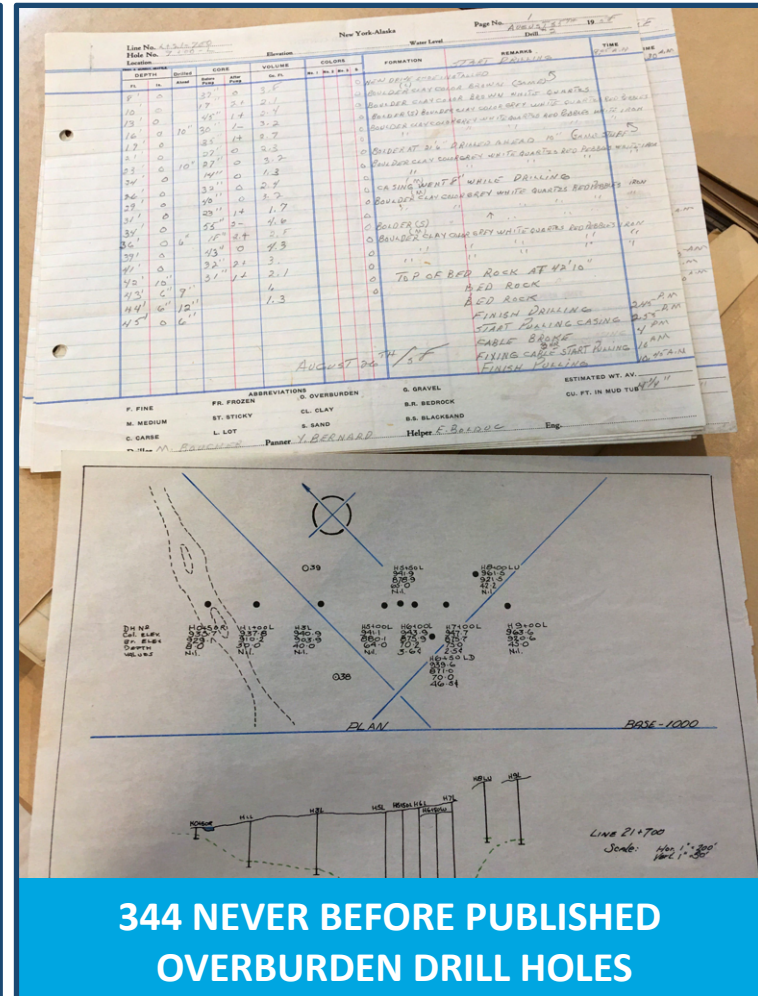
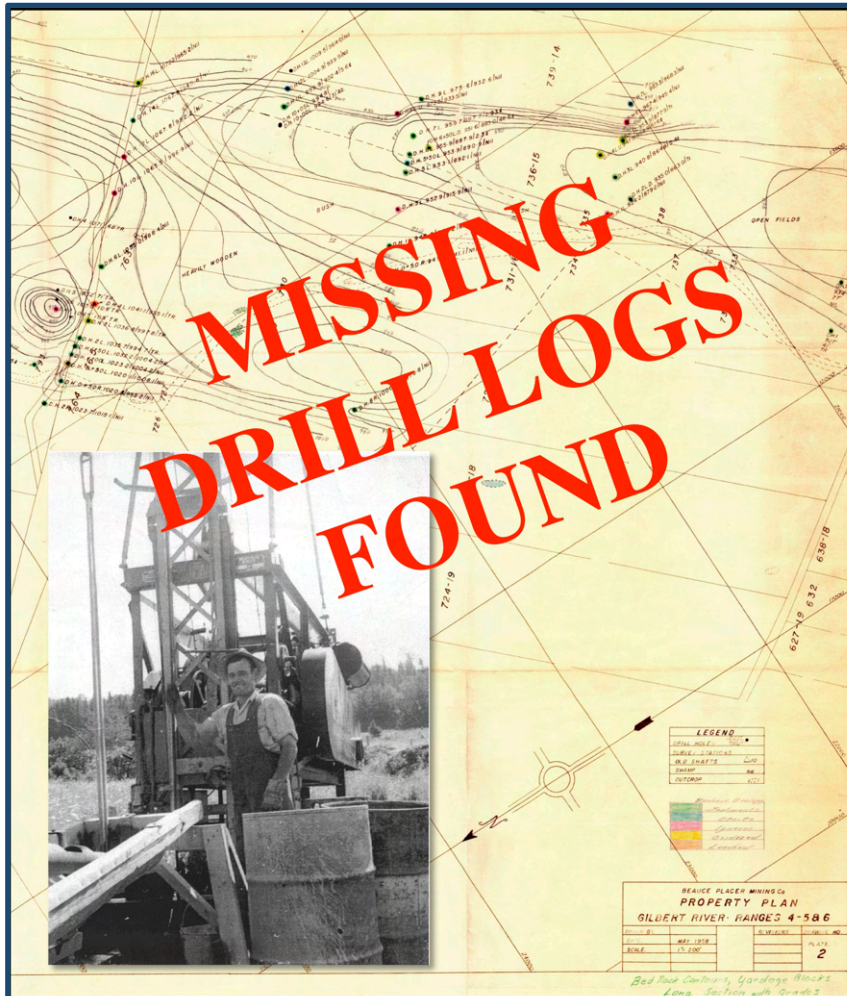
Gold Exploration Target for the entire historical placer channel ranges between **61,000 ounces** (2,200,000 m³ @ 0.87g Au/m³) and **366,000 ounces*** (2,200,000 m³ @ 5.22 g Au/m³)
 *source: Beauce NI43-101 Technical Report 2018.



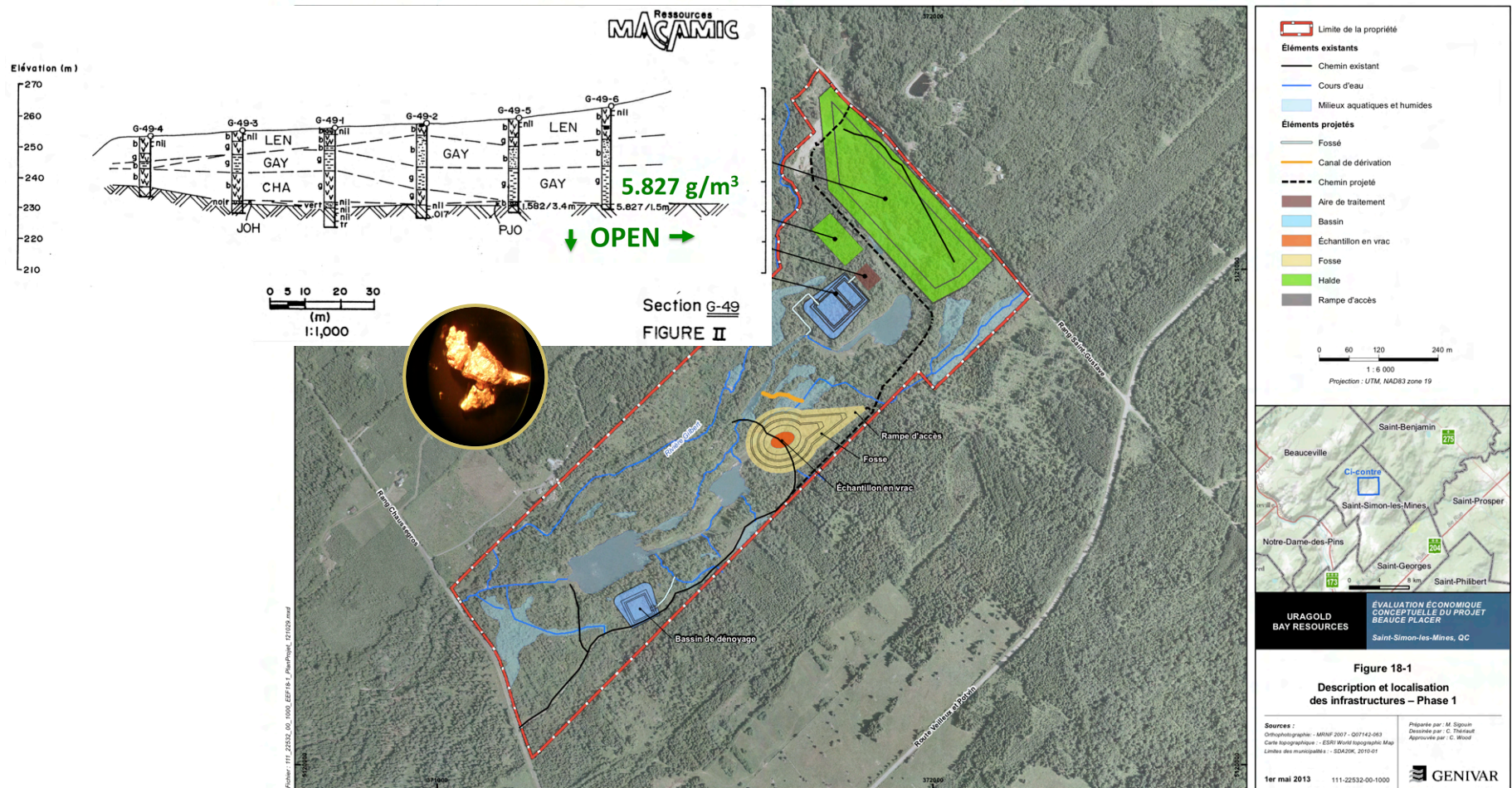


EXPLORATION MILESTONE

Lost 1950s Drill Logs & Records Found



Paleoplacer Gold Deposit Underestimated: Open laterally and at depth



Paleoplacer Gold Deposit Underestimated: Open laterally and at depth

Ressources
MACAMIC

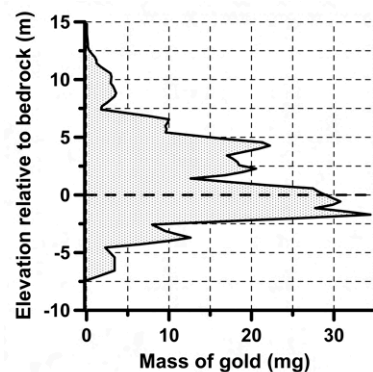
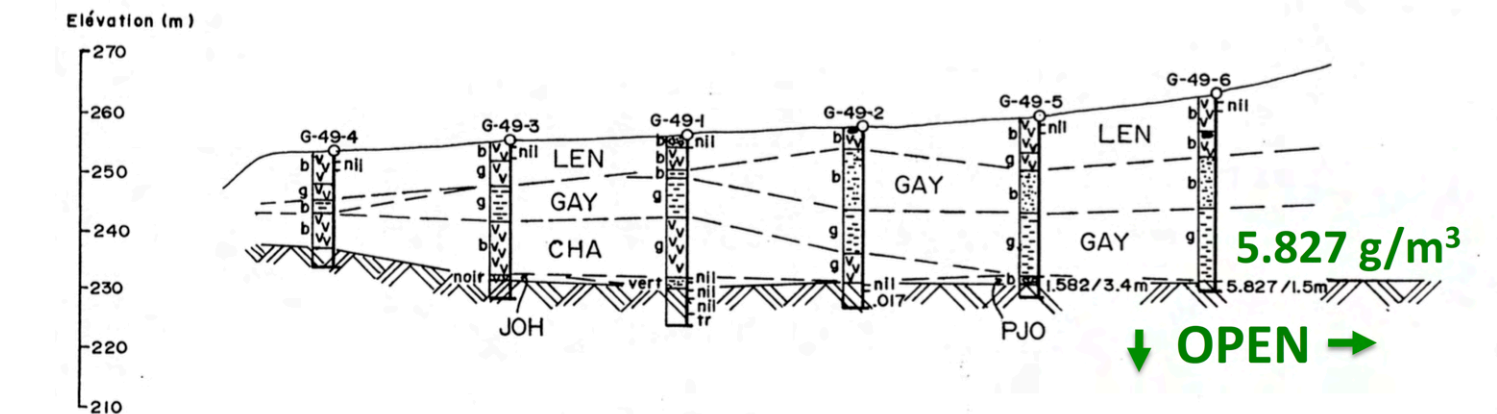


Figure (1): Vertical gold mass profile based on churn drilling results at 3 m vertical intervals Source: Coniagas Mines Ltd report (GM44862)

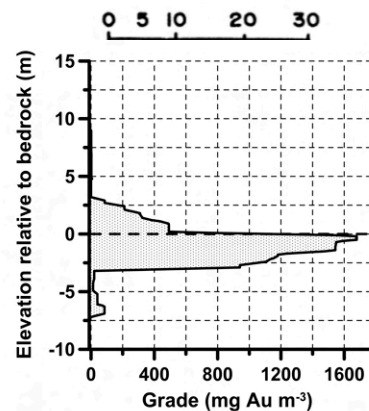


Figure (2): Vertical grade profile based on reverse circulation drilling results. Source: Macamic (and Roche) report (GM42988)



Paleoplacer Gold Deposit Underestimated

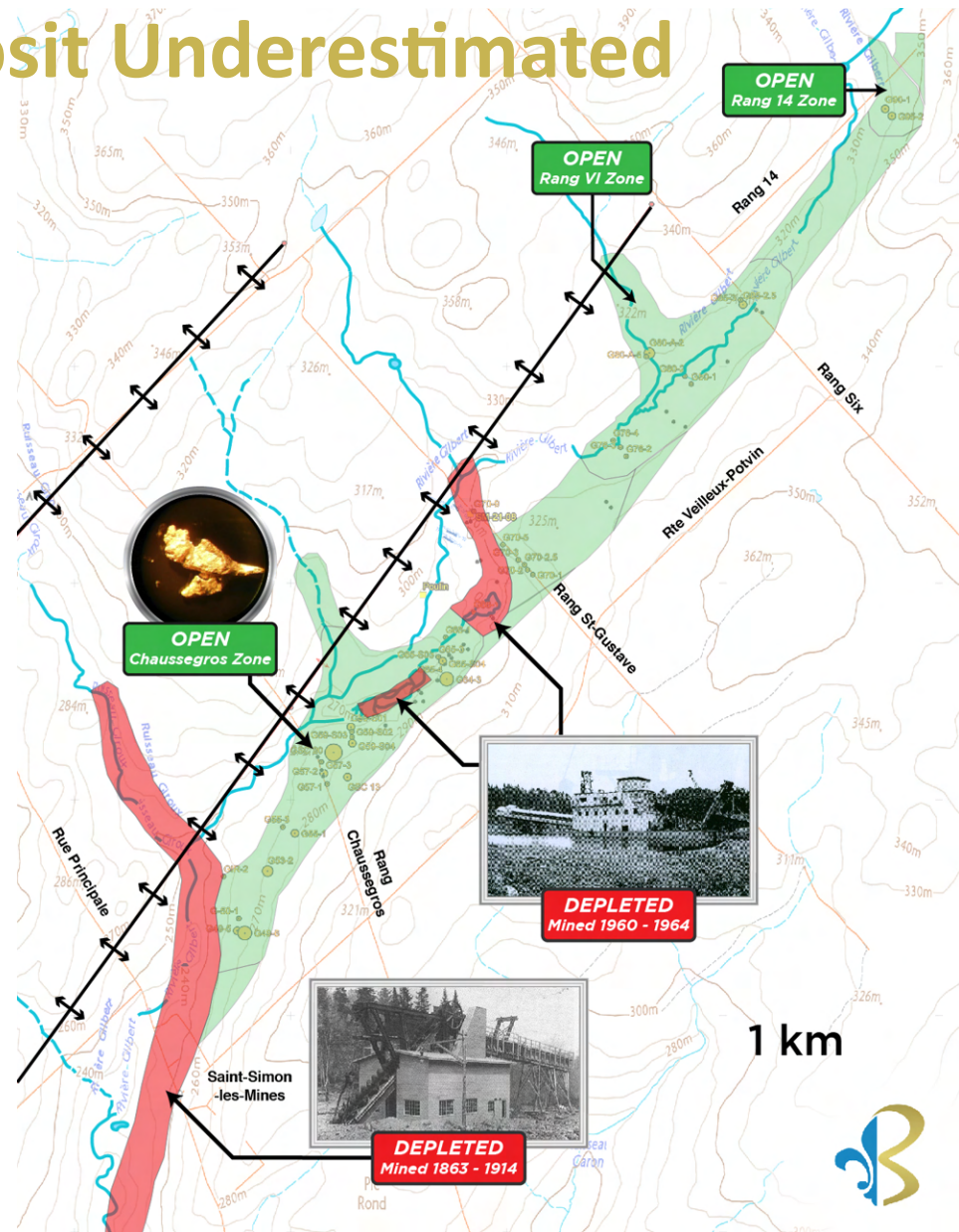
4 km of gold channel placed not exploited

Many KM of unexplored channel

The tributaries supplied the Gilbert River Valley with Tertiary and Quaternary gold

Origins of gold grains are both detrital and chemically derived

Possibility of increasing the exploration target by **61,000 ounces** (2,200,000 m³ @ 0.87g Au/m³) and **366,000 ounces*** (2,200,000 m³ @ 5.22 g Au/m³)



BEAUCE GOLD PROPERTY

EXPLORATION OBJECTIVE: FIND THE SOURCE!

To trace the historical placer gold deposit back to bedrock sources in order to make lode gold discoveries

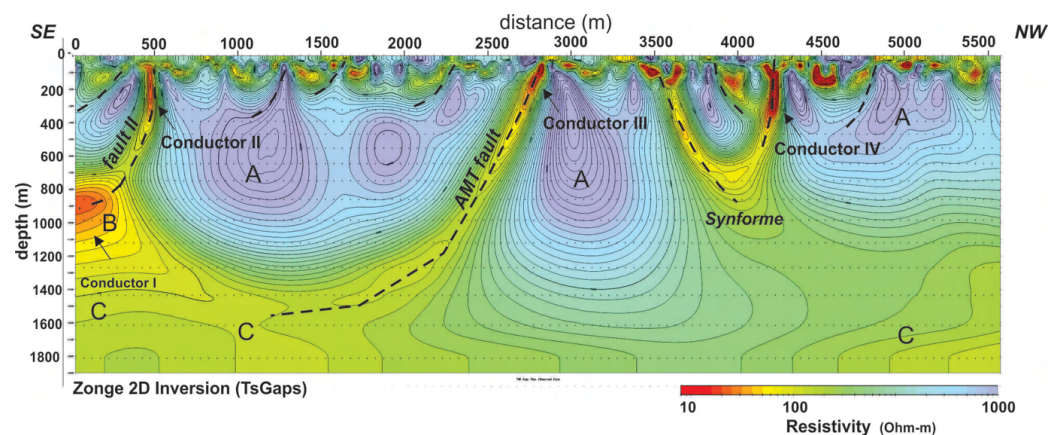
Focus always been on placer mining. Lode gold exploration in the area has been sporadic and inefficient. As a result, almost no available data on the surrounding bedrock geology!

Nous avons dû repartir de zéro, mais comme vous allez le voir, nous avons parcouru un long chemin !

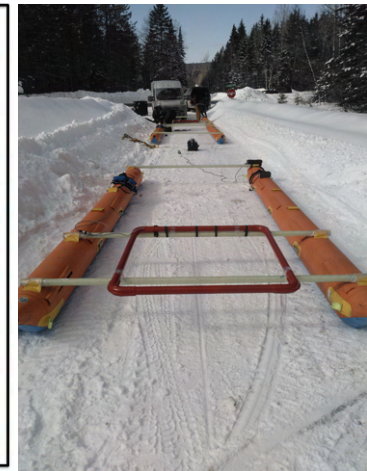
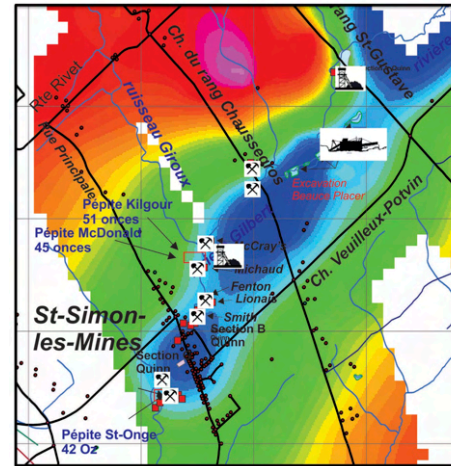


We're the first to apply modern exploration in 40 years:

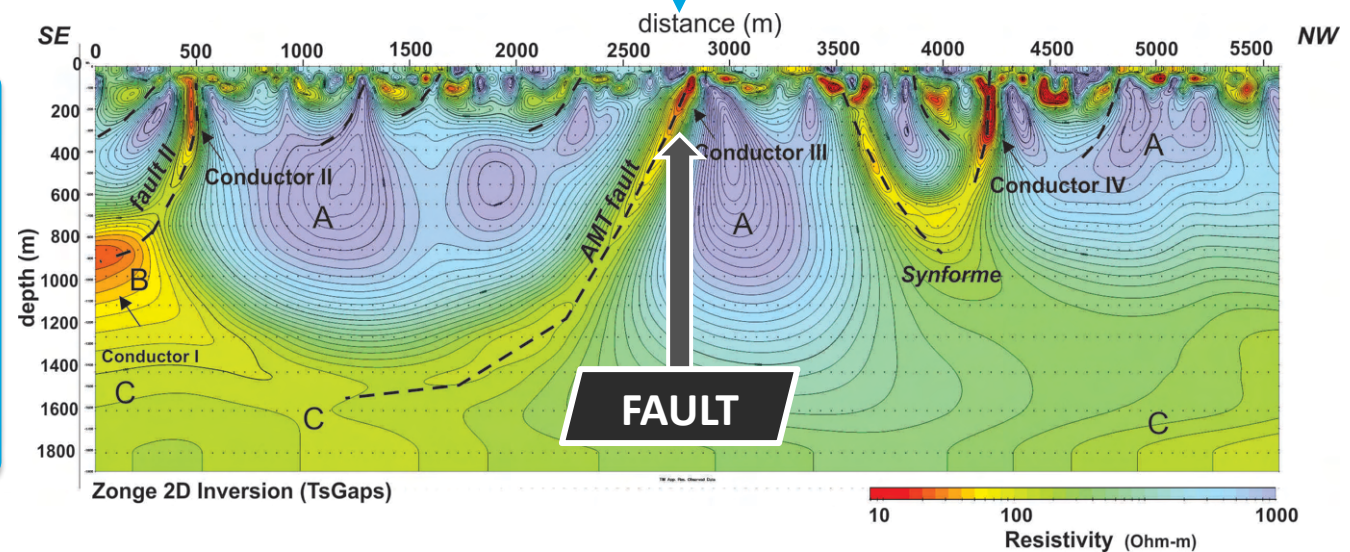
- Historical documents
- More than 20 km of Geophysics
- Hundreds of rock samples
- More than 50 trenches dug
- 38 diamond drill holes



EXPLORATION MILESTONE



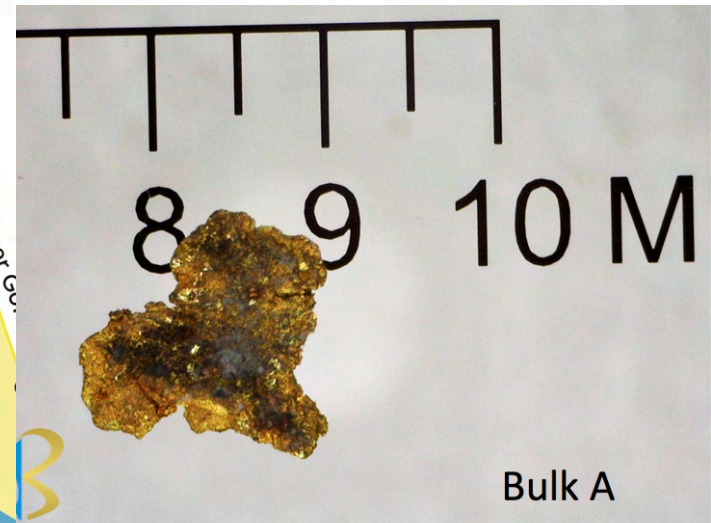
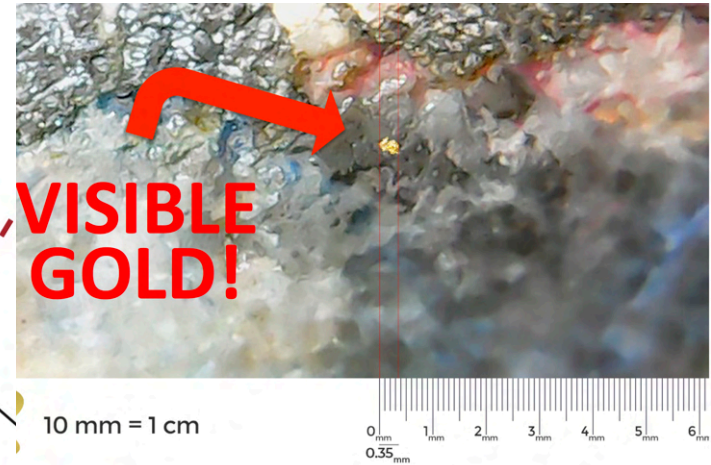
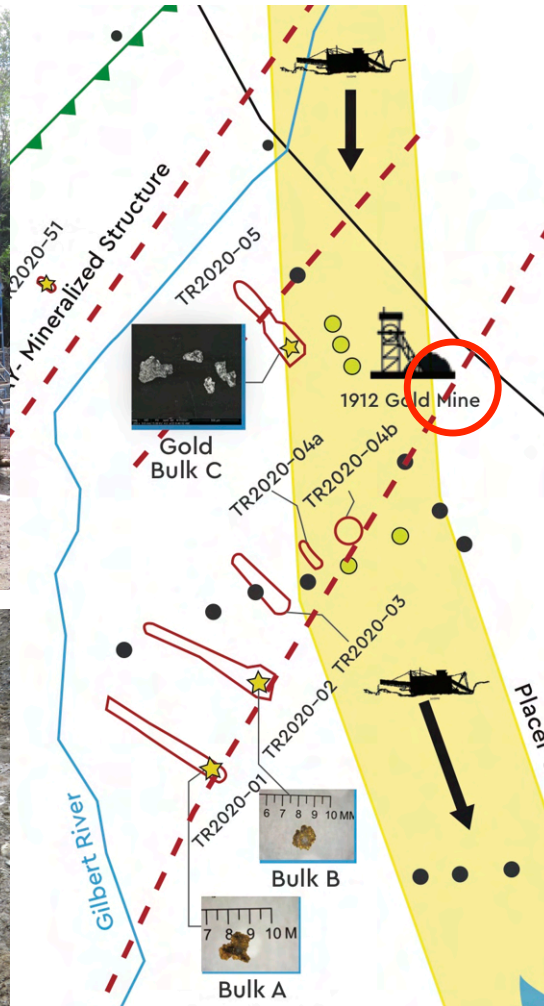
Geophysics identified a major Fault line beneath the Placer gold channel. The Fault line is the contact point between the Beauceville Volcanic Bedrock Formation and the St-Victor Sedimentary Formation



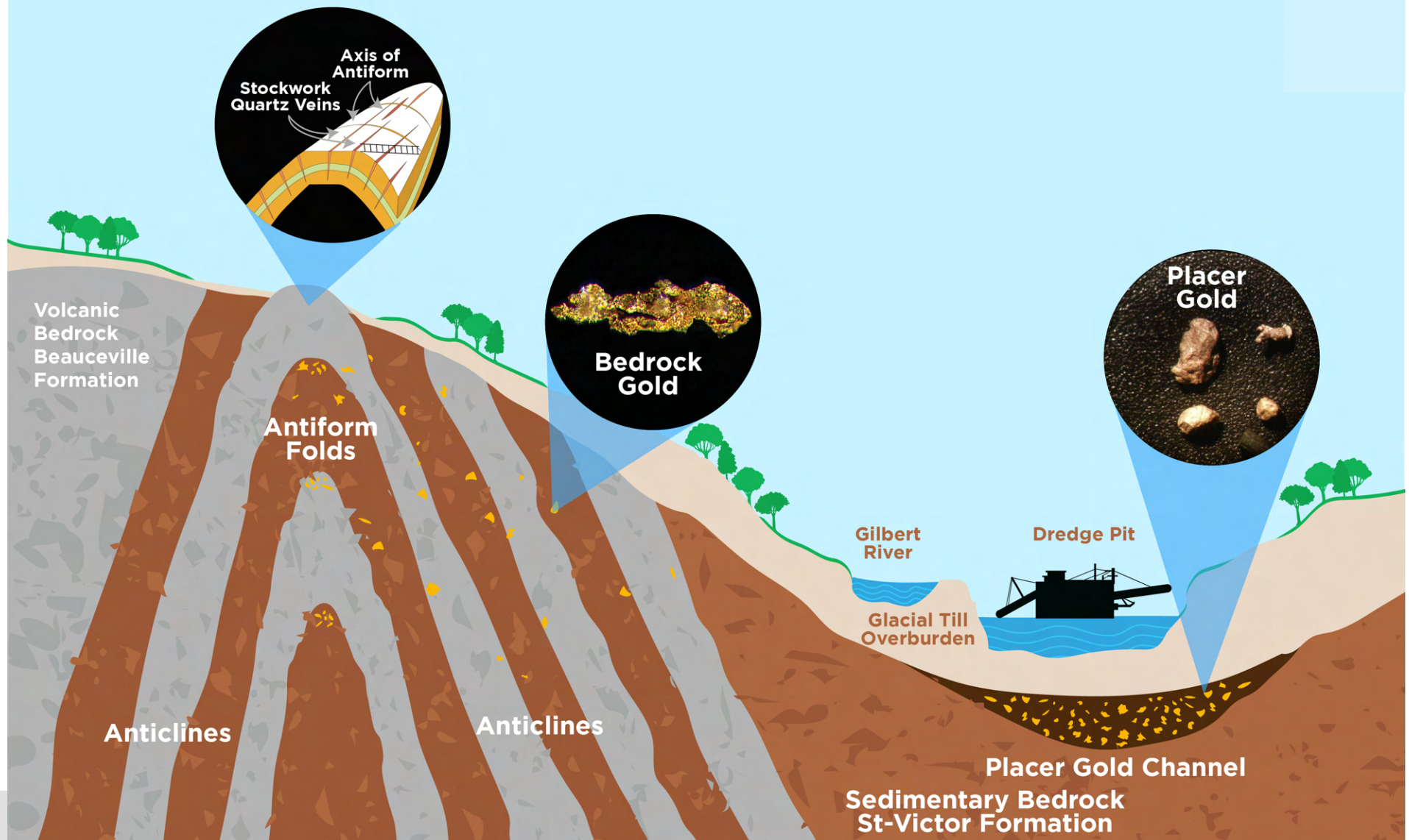


EXPLORATION MILESTONE

Test Drilling & Trenching Confirms Gold in Bedrock – Mineralized Structures



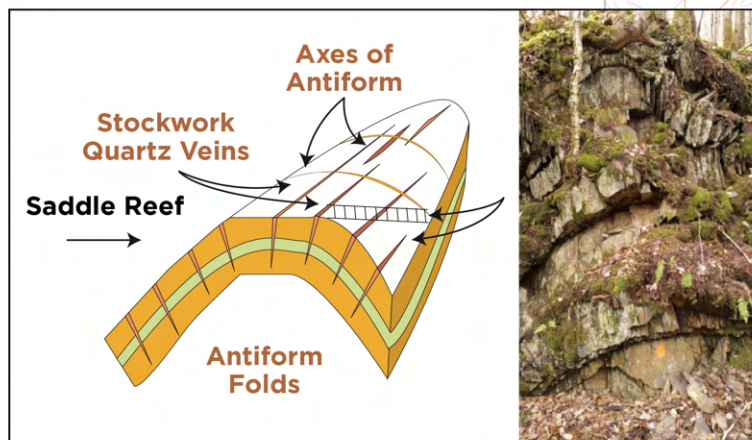
GEOLOGICAL MODEL - SADDLE REEF FORMATION



Honing in on the source

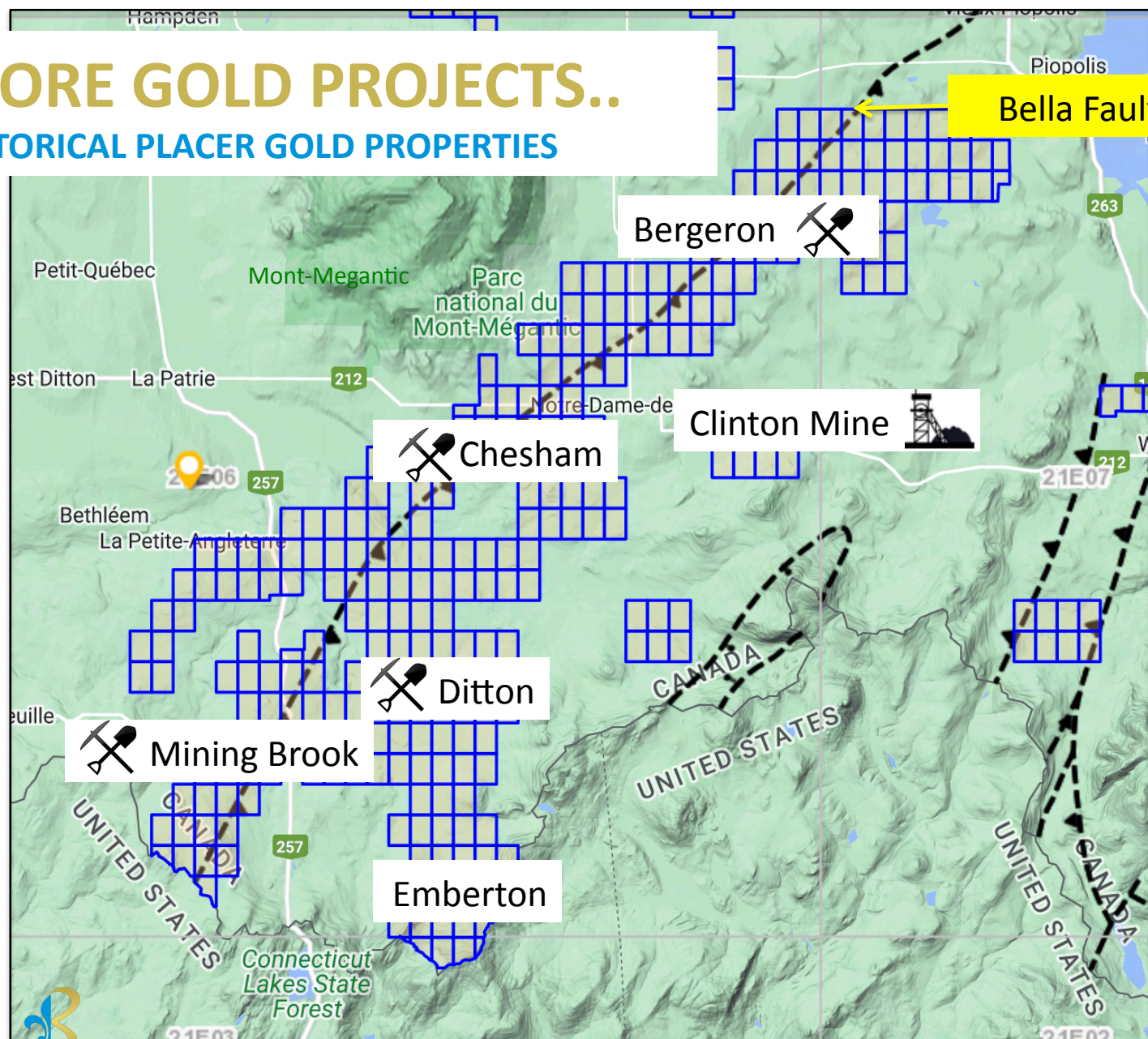
Lode gold source believed to be North to Northeast of placer gold channel.

Potential Australian, Bendigo type Saddle Reef formation. (20 million ounces)



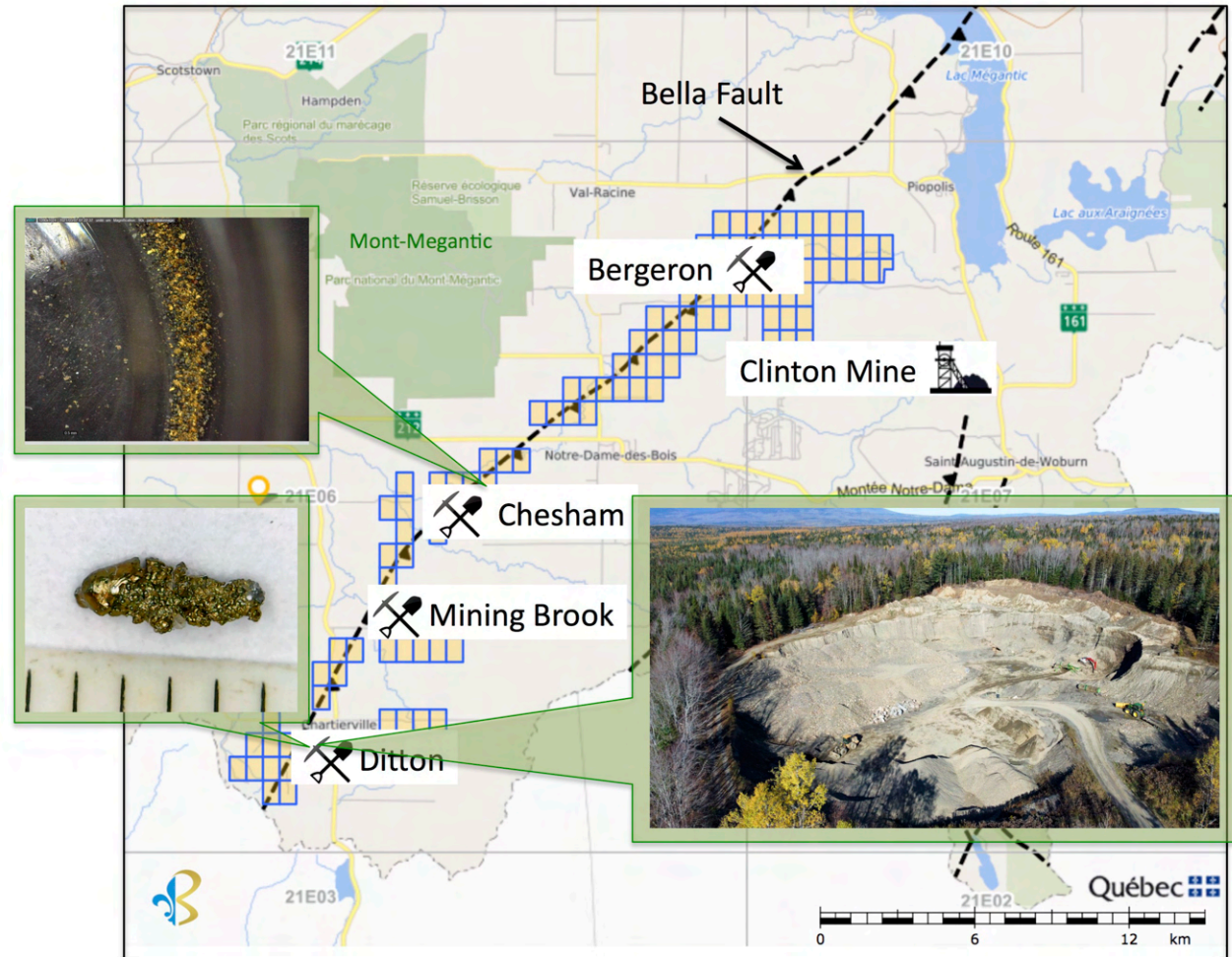
MORE GOLD PROJECTS..

HISTORICAL PLACER GOLD PROPERTIES



DITTON PROPERTY

- Gold discovered by the Archie Annance of the Abinaki Nation
- Major Placer Gold District
- Important potential for lode gold discoveries
- Up to 10g/t Au in sand pits
- 4 historical placer gold deposits along Bella Fault line
- Indications of proximal sources of gold



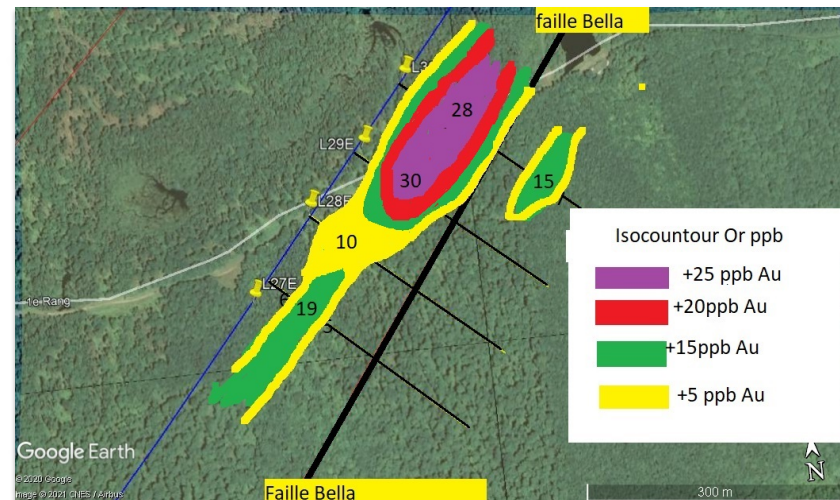
DITTON PROPERTY



The Bella fault line, which is the major structural element of the Mégantic property, is in contact between the Compton and Frontenac Formations. Observations suggest several intrusive phases that would be favorable to the establishment of gold mineralization.

The Mégantic property is located in southern Quebec limited to the southwest by the American border of New Hampshire and to the northeast by Lac Mégantic.

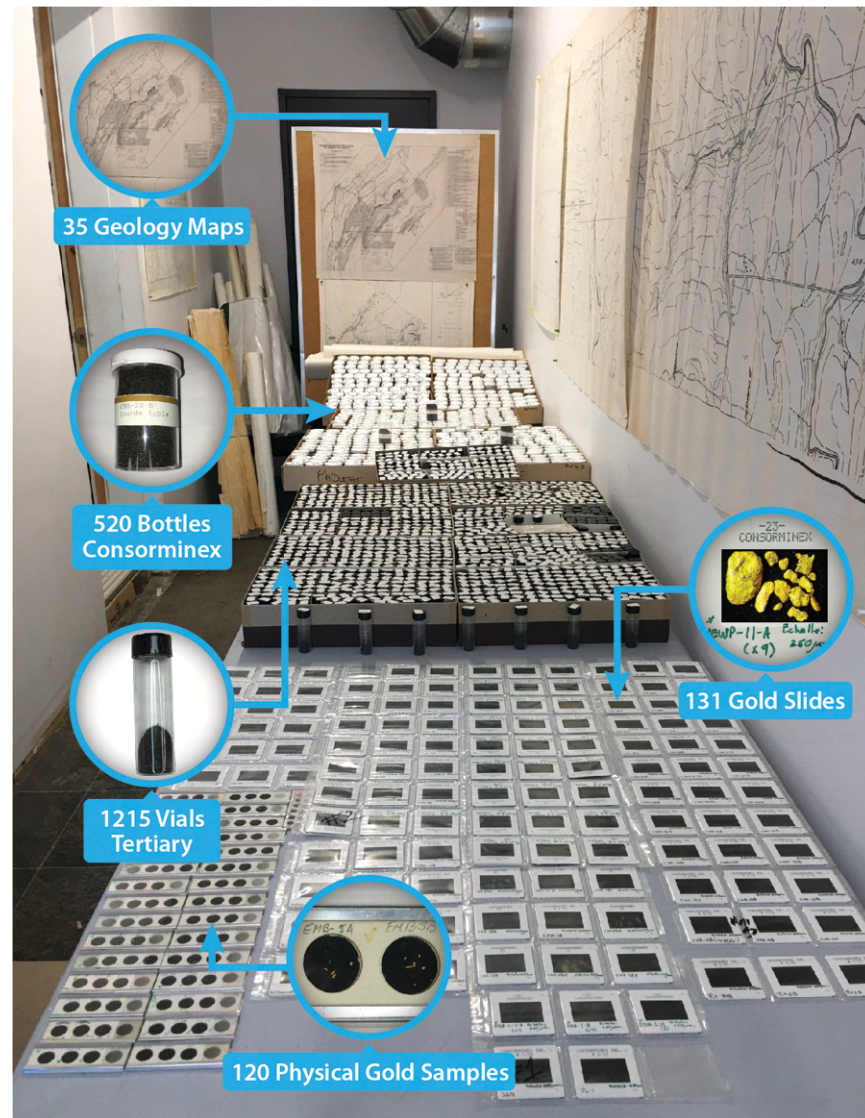
The property extends for at least 30 km along the axis of the Bella Fault. It is divided into four historic placer gold districts: the Ditton, the Mining Brook, the Chesham and Bergeron rivers.



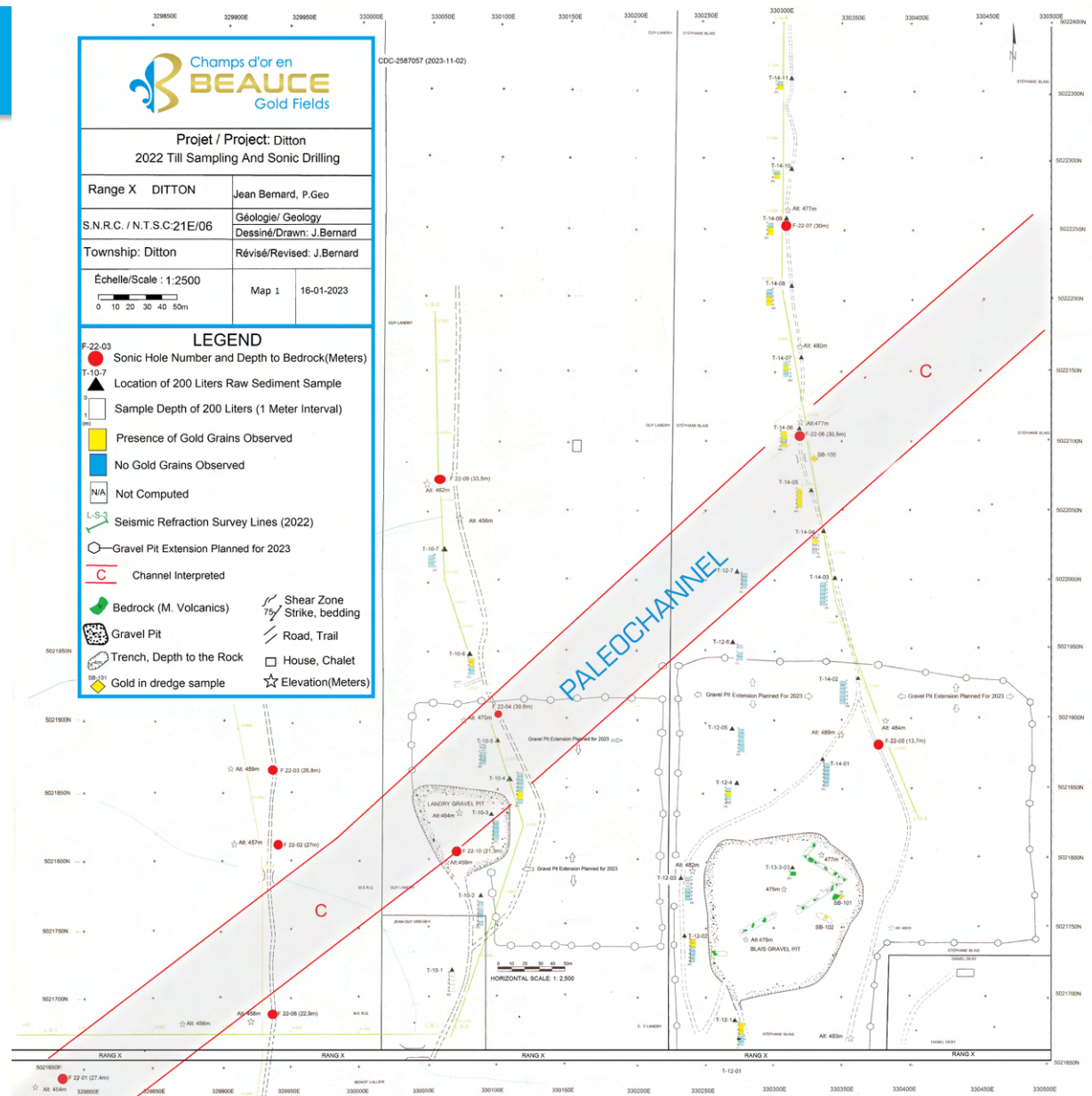
DITTON PROPERTY

Never-before-published
historical exploration data

- Acquired from a local Prospector
- 1,700 Concentrates
- 120 physical gold samples
- 35 maps



Ditton Property



DITTON PROPERTY



DITTON PROPERTY

New discovery of an unexplored placer gold deposit
A North American first in over a century



NEW DISCOVERY OF PLACER GOLD CHANNEL

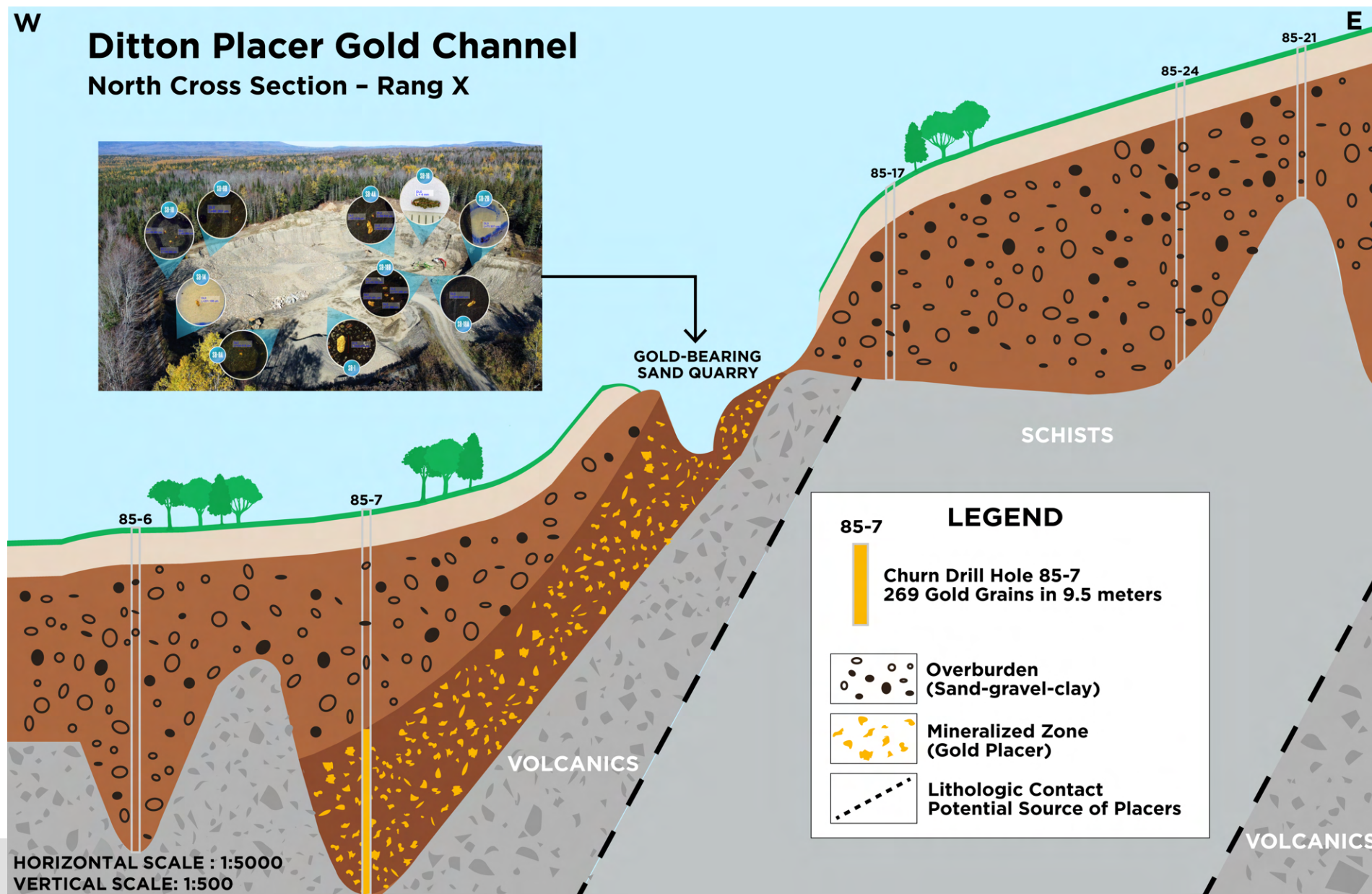
W

Ditton Placer Gold Channel

North Cross Section - Rang X



GOLD-BEARING
SAND QUARRY

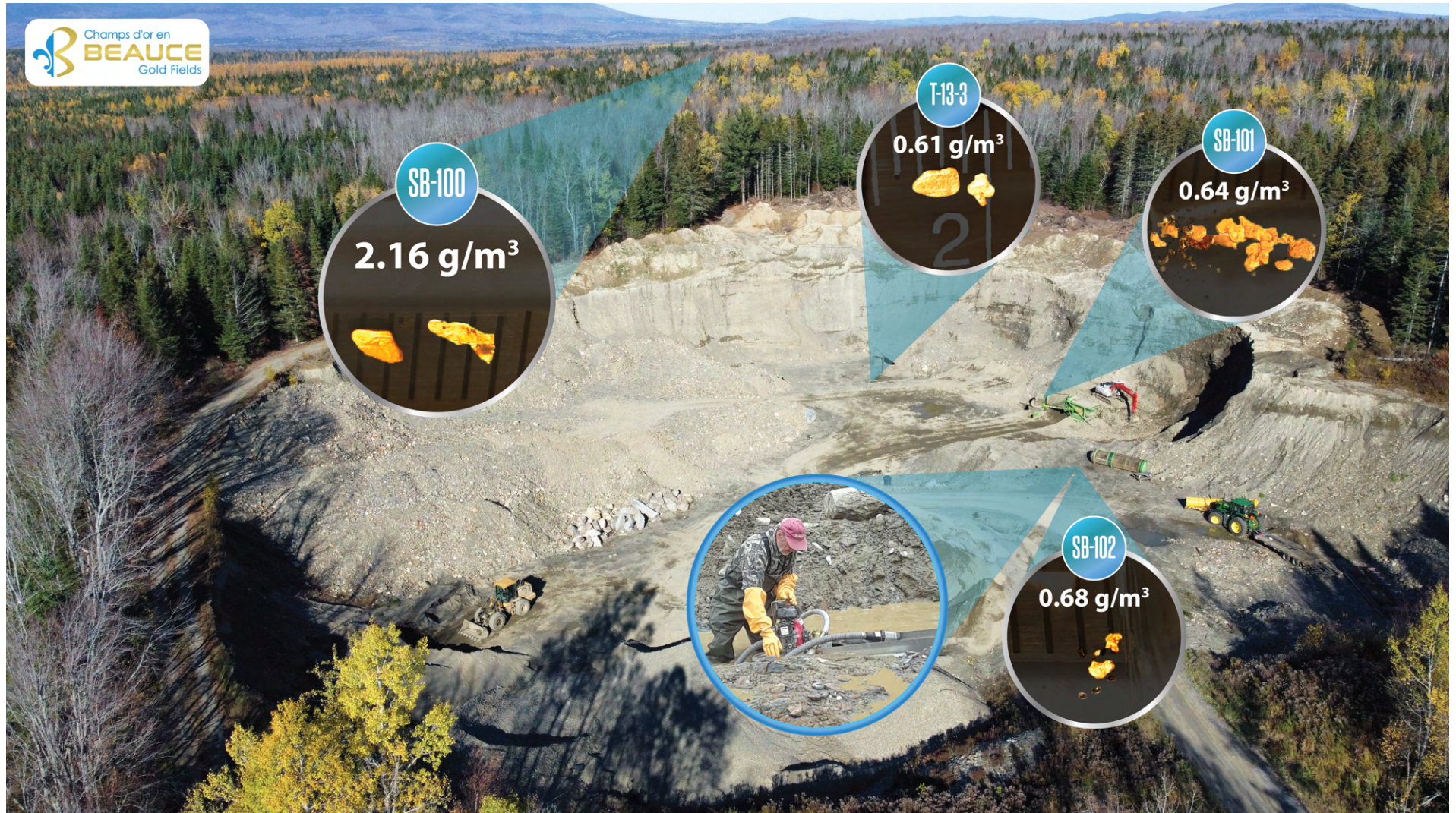


Exploration 2022

10 Sonic Drill Holes, 180 Bulk Sample and 4 Lines of Geophysics



Sample grades higher than the $.30 \text{ g/m}^3$ average for North America placer gold



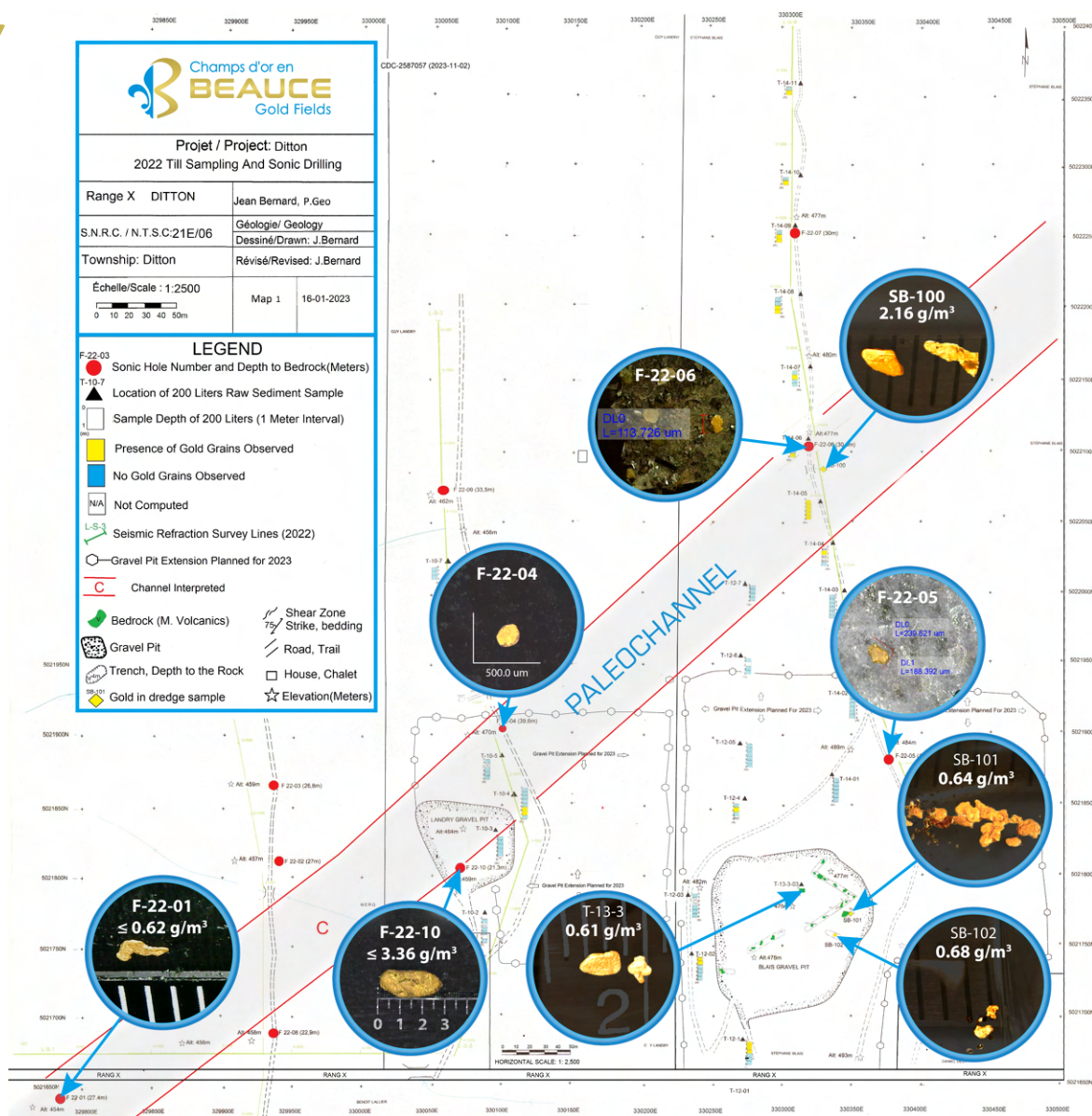
DITTON PROPERTY

2022 exploration results confirms gold anomaly in paleoplacer channel

Placer channel open to the South, East, SW & NE

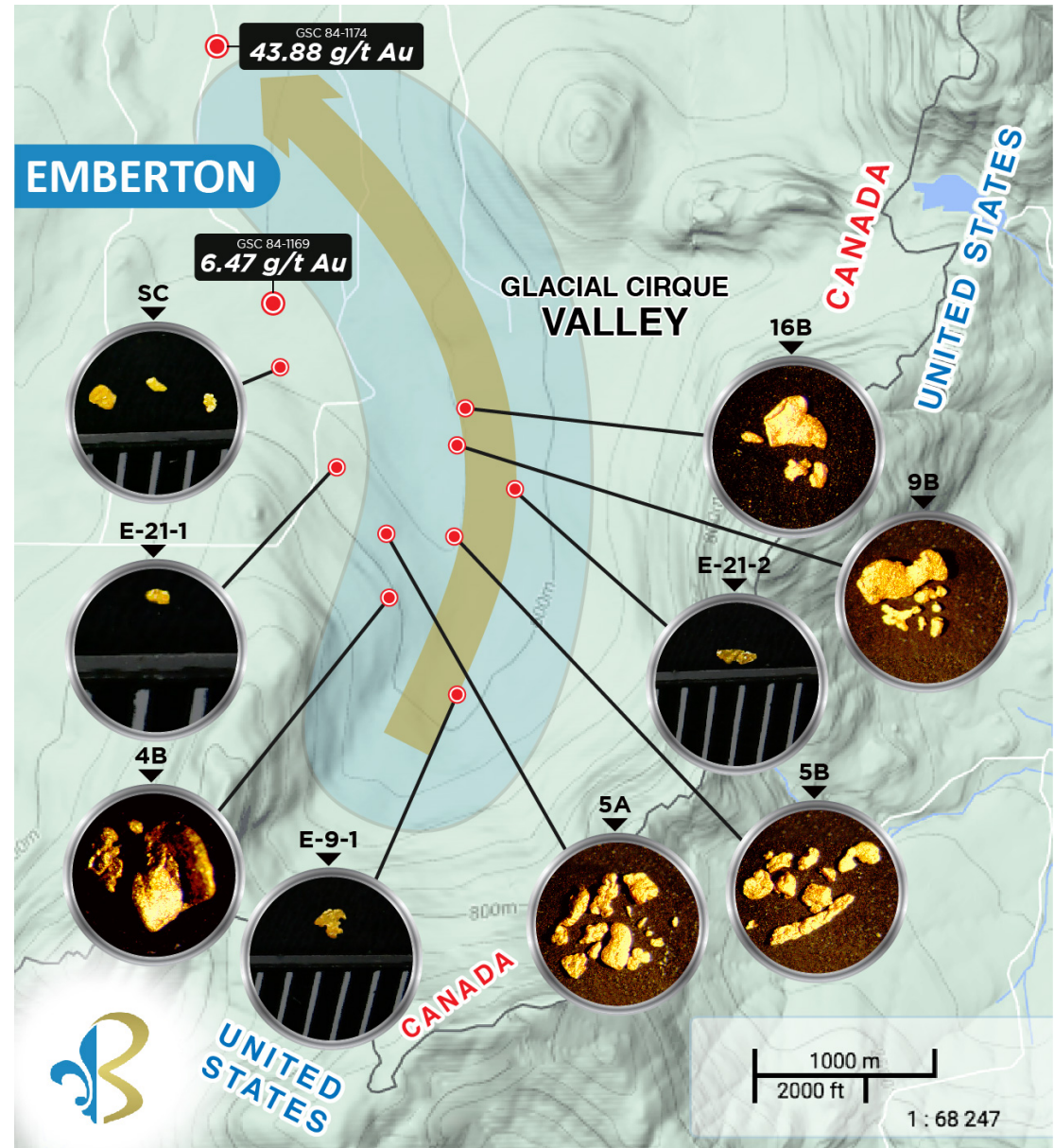
Placer gold identified in both Tertiary & Quaternary deposits

Placer gold potentially derived from a proximal lode gold source



New Discovery

- Gold over a 4 KM Dispersal Trail
- Large Gold Grains
- Unexplored Potential



STRONG SOCIAL ACCEPTABILITY

A community proud of its gold mining heritage



A St-Simon-les-Mines Town Hall Presentation

For the last 10 years, Patrick Levasseur has built strong local relationships and has garnered community support for BGF

100% Property access. All private property land owners have signed and granted the company access to their property for gold exploration

With each opportunity, BGF hires talented people from the community and will always prioritize the purchase of goods and services from local businesses

For more information contact
Patrick Levasseur, President & CEO
(514) 262-9239
patrick.levasseur@beaucegold.com



Lost of info on our YouTube channel
<https://www.youtube.com/@beaucegoldfields>
Visit and subscribe!

