



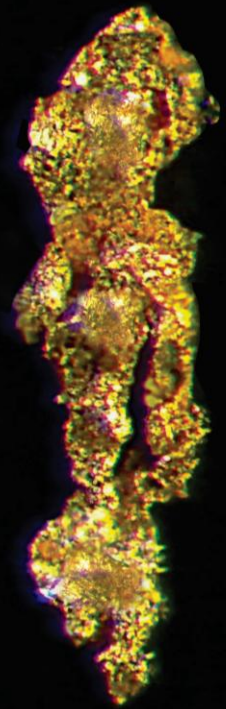


GOLD & SILVER EXPLORATION IN SOUTHERN QUEBEC

TSX-V: BGF



January 2025



DISCLAIMERS

This presentation includes certain “forward-looking statements”

All statements, other than statements of historical fact, included herein, including, without limitation, statements regarding future plans and objectives of the company, are forward-looking statements that involve various risks, assumptions, estimates and uncertainties, and any or all of these future plans and objectives may not be achieved.

These statements reflect the current expectations or beliefs of Beauce Gold Fields. (“the Company”) and are based on information currently available to the Company. There can be no assurance that such statements will prove to be accurate, and actual results and future events could differ materially from those anticipated in such statements. All of the forward looking statements contained in this presentation are qualified by these cautionary statements and the risk factors described above. Furthermore, all such statements are made as of the date this presentation is given.

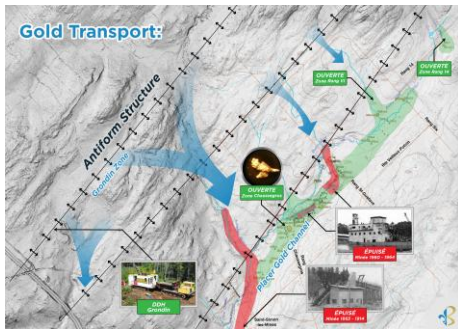
An investment in the Company is speculative due to the nature of the its business. The ability of the Company to carry out its plans as described in this confidential presentation is depending on obtaining the required capital. There is no assurance that the Company will be able to successfully raise the capital required or to complete each of the growth initiatives described. Investors must rely upon the ability, expertise, judgment, discretion, integrity and good faith of the management and Board of the Company.

Reference materials source:

NI 43-101 HPQ Report Beauce Gold,
Histoire d’or en Beauce, Drouin 2007
Obalski 1898, Richer-Lafleche 2017 - 2021

Reference to historical gold figures in this entire presentation do not comply with the CIM reporting standards National Instrument 43-101 for mineral resources or reserves and should not be relied upon. While the Company considers these historical estimates to be relevant to investors as it may indicate the presence of mineralization, a QP for the Company has not done sufficient work to classify the historical estimates and Beauce Gold Fields is not treating these historical estimates as a current mineral resource

BEAUCE



Site of Canada's first gold mine

Historical Placer Gold Deposit:

Exploration Target

61 000 ounces (2 200 000 m³ @ 0,87 g Au/m³) to 366 000

ounces* (2 200 000 m³ @ 5,22 g Au/m³)

Drilling Saddle Reef: Antiform structures source of placers

DITTON



Potential near term placer gold production

Placers are low CapEx Requires just gravity & water

Potential bedrock lode gold discoveries

QUEBEC PHOSPHATE



29 Phosphate properties

Greater variety of host rock – anorthosite, petalite, dravite

Canada & Quebec added Phosphate to critical & strategic minerals list

CAPITAL STRUCTURE

Shares Outstanding: 98,126,971

Ownership:

President & CEO 11%

HPQ Silicon 3%

Insiders 2%

Spin-Out of

HPQ SILICON



IPO: February 2019

Management & Directors

PATRICK LEVASSEUR: President & CEO, Director

BERNARD J. TOURILLON, B.A.A, MBA – Chairman, Director

ROBERT GAGNON – P. GEO – Director,
Geologist, President Explomine

ANN LEVASSEUR, B.COM,- CIM – Director
Portfolio Manager, Investment Advisor

LAM CHAN THO, Bsc. A., Eng. MBA, LLB – Director

FRANCOIS RIVARD - CFO

JEAN BERNARD – P.Geo Geologist

IPO February 2019



WHY BEAUCE GOLD FIELDS?

- New lode gold discoveries
- Near term potential for placer gold production

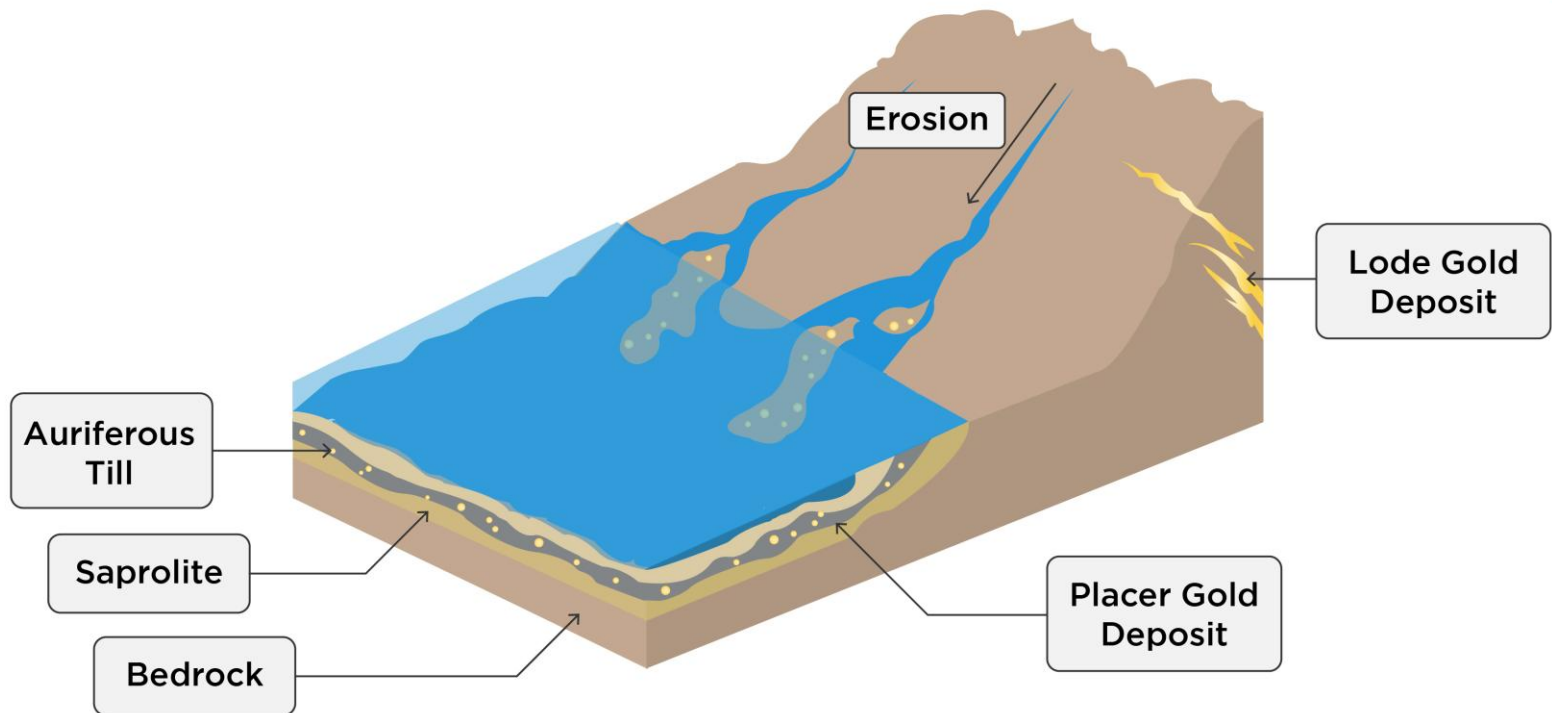
We want to know, where did all this placer gold come from?



PLACER GOLD TO LODE GOLD EXPLORATION

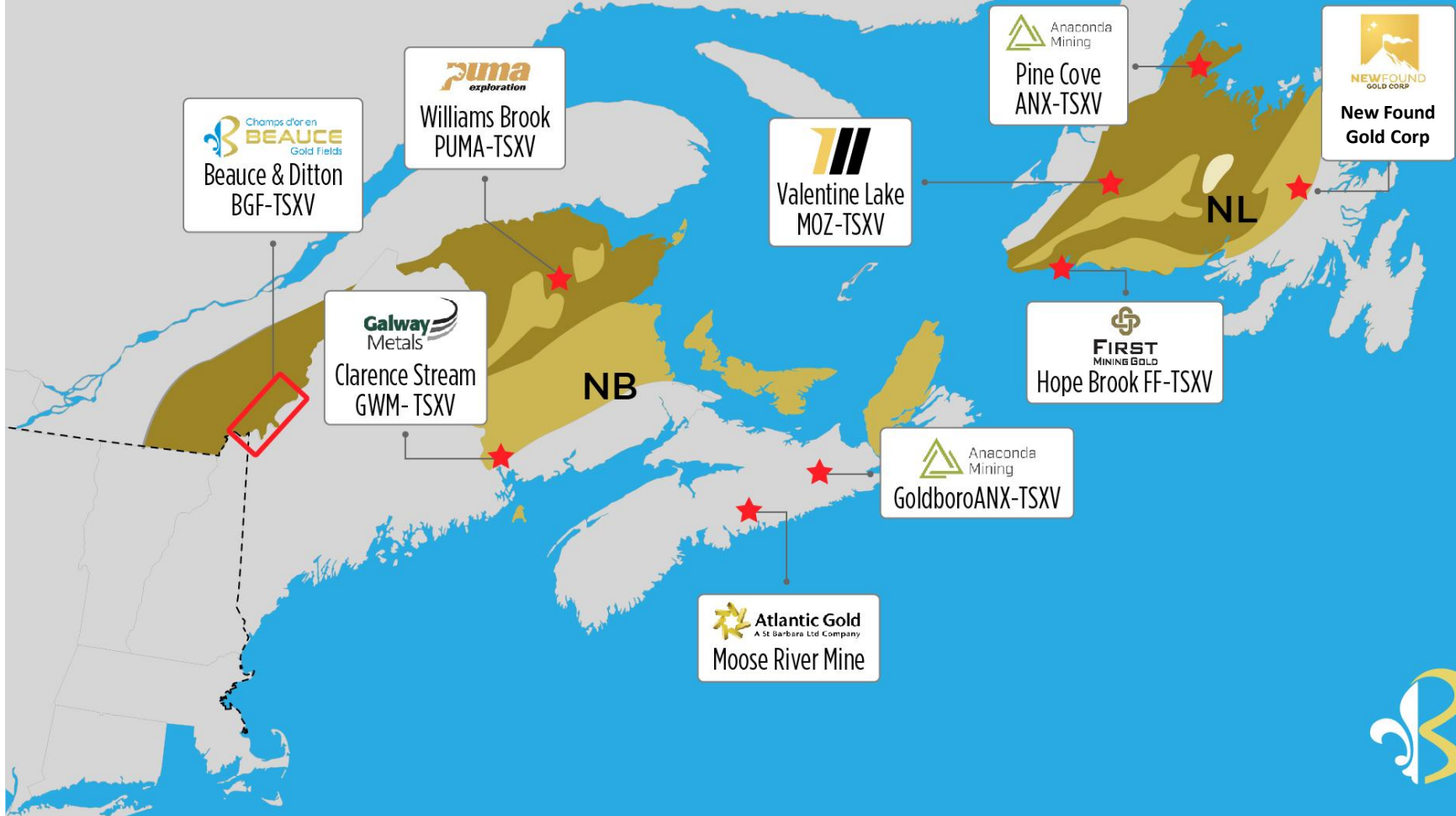
What is Placer Gold?

It's gold that has been dislodged from a bedrock source by erosion or other forces of nature and transported to form a secondary deposit



Dunnage and Gander Zones

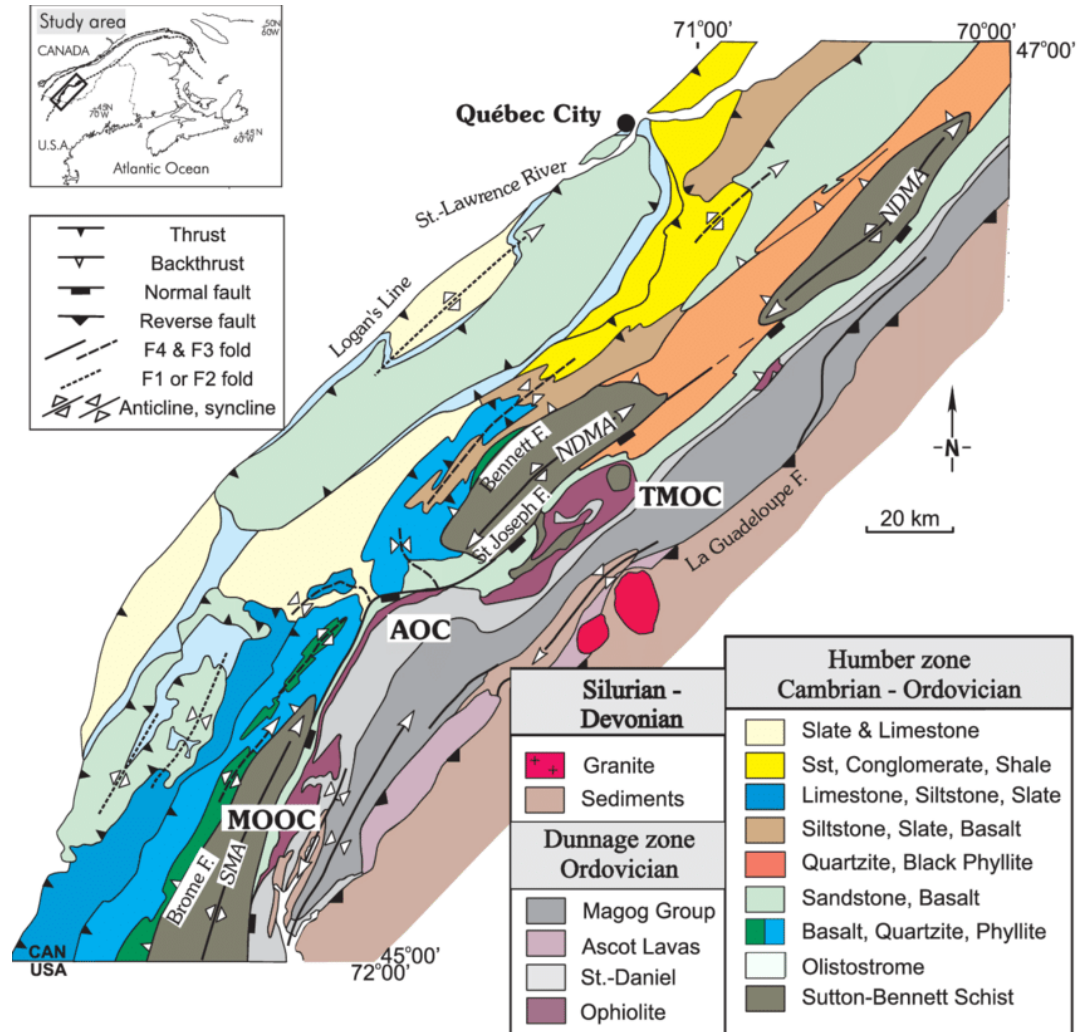
QUEBEC



REGIONAL GEOLOGY OF THE BEAUCE:

The Beauce gold sector straddles two of the major tectonostratigraphic subdivisions of the Appalachians. The latter, the Gander zone to the northwest and that of Dunnage to the southeast.

Gold mineralization mainly follows fault contacts between volcanic and sedimentary rock formations for example the Beauceville and St-Victor Formation on our Beauce Gold project or the Bella Fault contact between the Compton and Frontenac Formations found on the Ditton project.

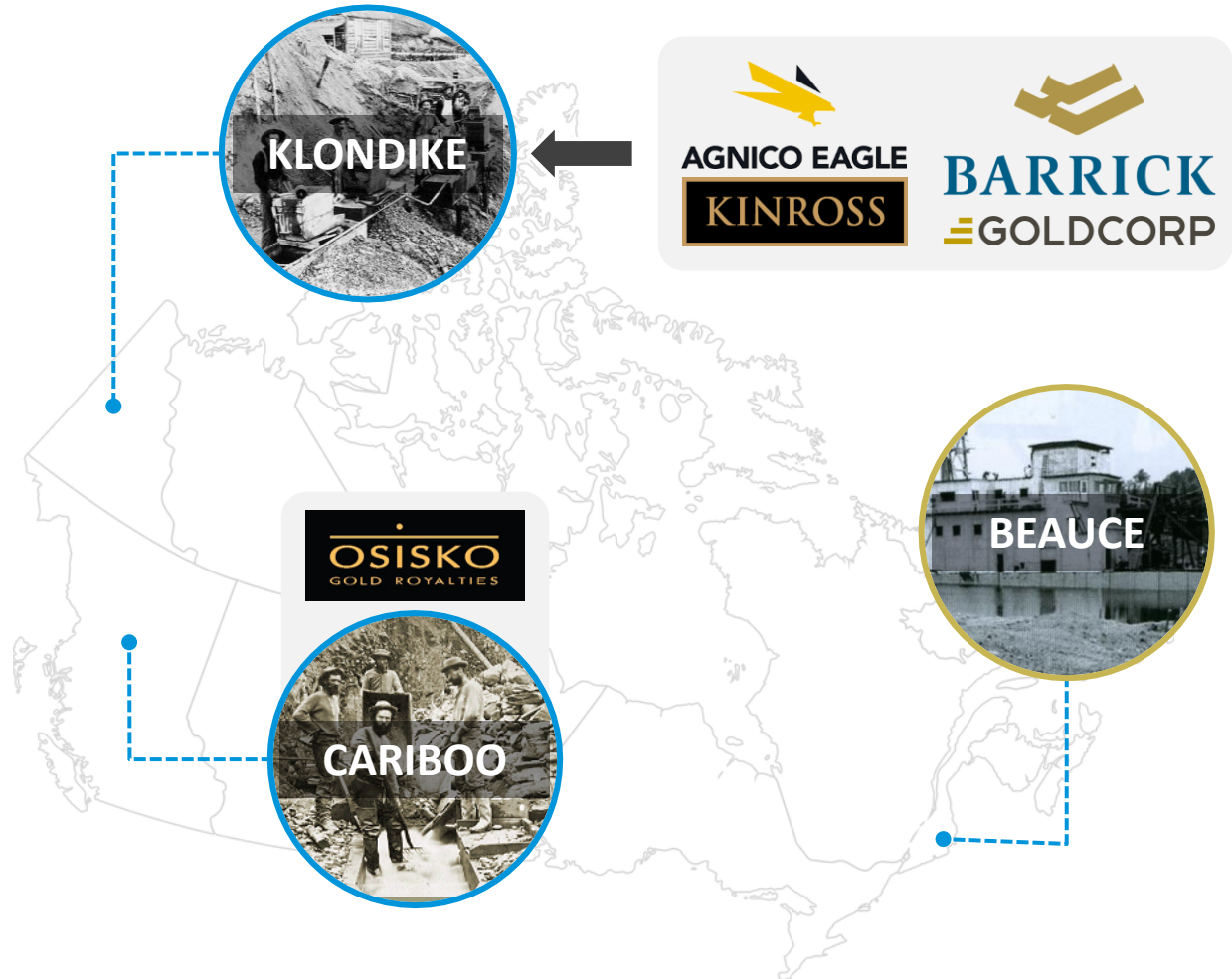


PLACER GOLD DISTRICTS IN CANADA

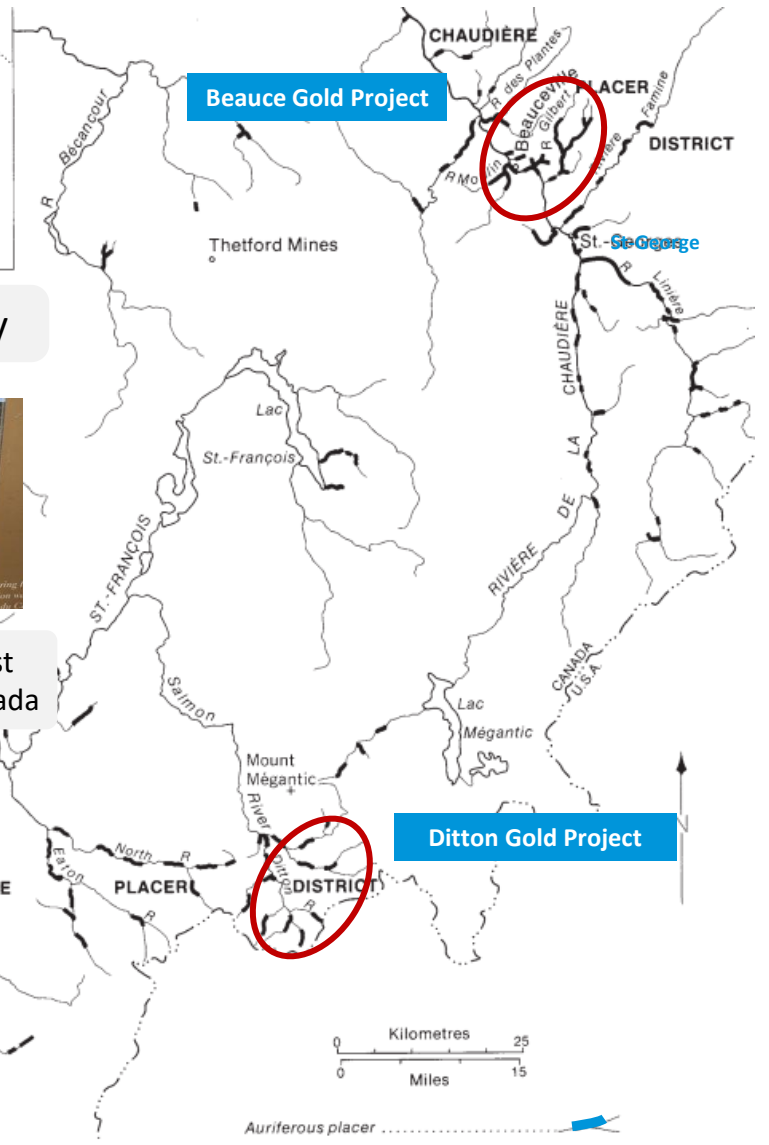
Recent placer to lode gold discoveries attracting majors

Beauce is the last remaining Canadian placer to hard rock gold exploration project to be explored

After decades of being overlooked, recent lode gold discoveries in the Yukon and BC placer fields has lead to a modern gold rush with major gold companies investing in historical placer gold properties



Biggest Claim Holder in Largest Placer Gold District in Eastern North America



The Beauce Holds Many Firsts in Canadian Mining History



First Canadian Gold Company



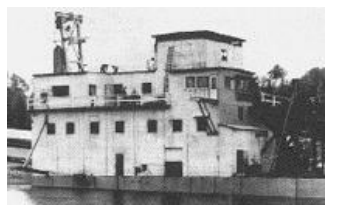
First gold rush in Canada before the Klondike



Some of the Largest Gold Nuggets in Canada



Placer Mines 1847 to 1914



Largest Gold Dredging Operation in the East

BIGGEST BLUNDER IN CANADIAN MINING HISTORY:

100 years no gold exploration in Southern Quebec

Once gold was discovered in the Beauce in 1847, Charles-Joseph Chaussegros Delery, the great grandson of Seigneur (Lord) Chaussegros DeLery, claimed the family held patent rights to gold & silver in the Beauce. He hastened to obtain the letters patent of the government of London granting him the exclusive and perpetual control of the exploitation of all the precious metals found on the lands of his seigneurie.

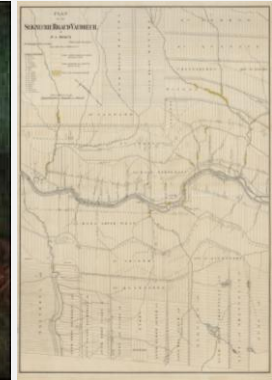
The Seigniorial system was abolished in 1854. The former tenants of the seignory in the Beauce, having obtained full ownership of their land, contested the validity of the gold patents.

The Chaussegros DeLery family imposed large royalties on miners. Lawsuits and at times violent opposition erupted between mining companies, local miners and farmers.

To prevent Seigniorial descendants from monopolizing Quebec's mineral resources, the government established in 1864, the Gold Mines Act. The introduction of the concept of mineral claims brought about a real conceptual revolution. It constitutes the very foundation of the mining regime we know today.

1881, the provincial government challenged the validity of DeLery's patent in court and demanded that it be declared illegal and quashed. In 1884, the Courts upheld the DeLery family and many other gold patents rights.

Outcome, it became impossible throughout Southern Quebec for mining companies to stake claims for mineral exploration. It was only in 1985 that the provincial government took back mineral rights and made the region available for claiming.



Seigneur* Chaussegros DeLéry and map of the Rigaud Veaudreuil Seignory (Estate) today known as the Beauce

*A Seigneur was an aristocratic title equivalent to a Lord, The Seigniorial system was a feudal system of land ownership before the British invasion of New France (Quebec) in 1759.

Chaussegros DeLery family VS Miners



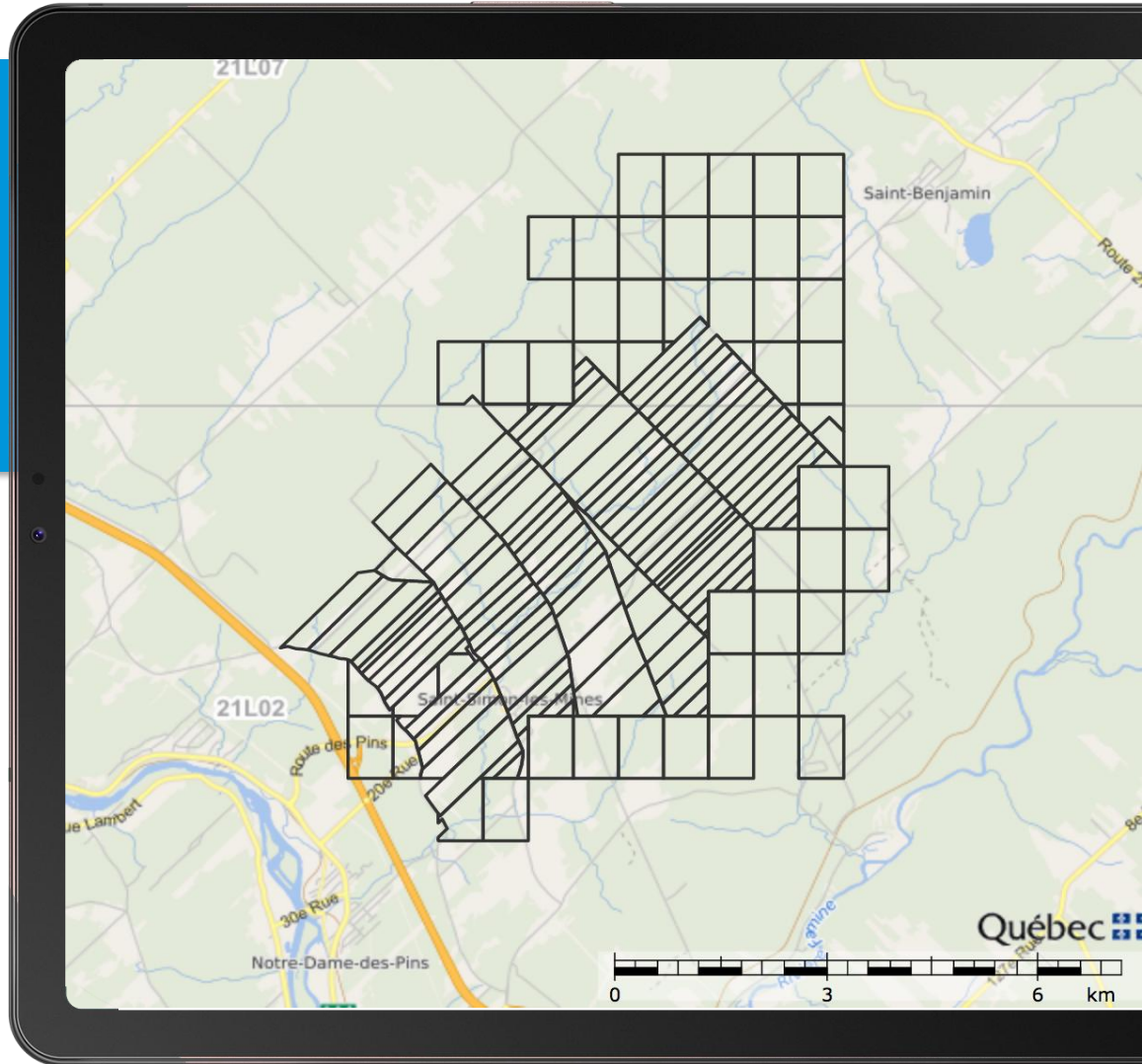
BEAUCE GOLD PROPERTY

Claims 240+

claims covering the historical Beauce placer gold field

Real Estate

Company owns 7 lots, 175 acres



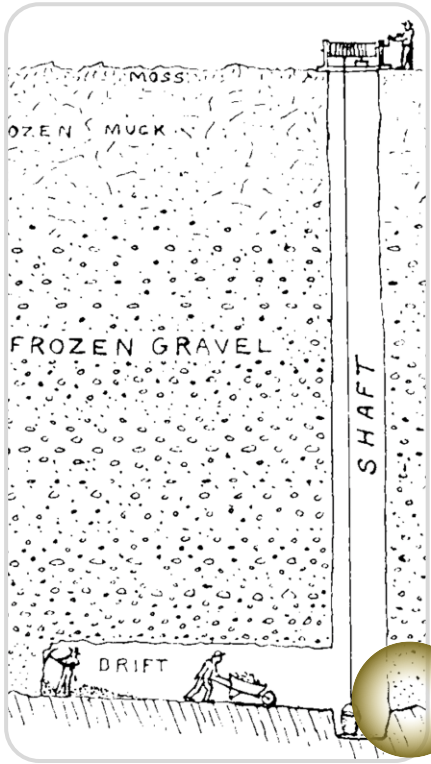
1847 - 1914: PLACERS MINED UNDERGROUND



The historically mined placer gold deposit sits in units of saprolite and a diamictite (auriferous) till covered by a thick glacial till overburden

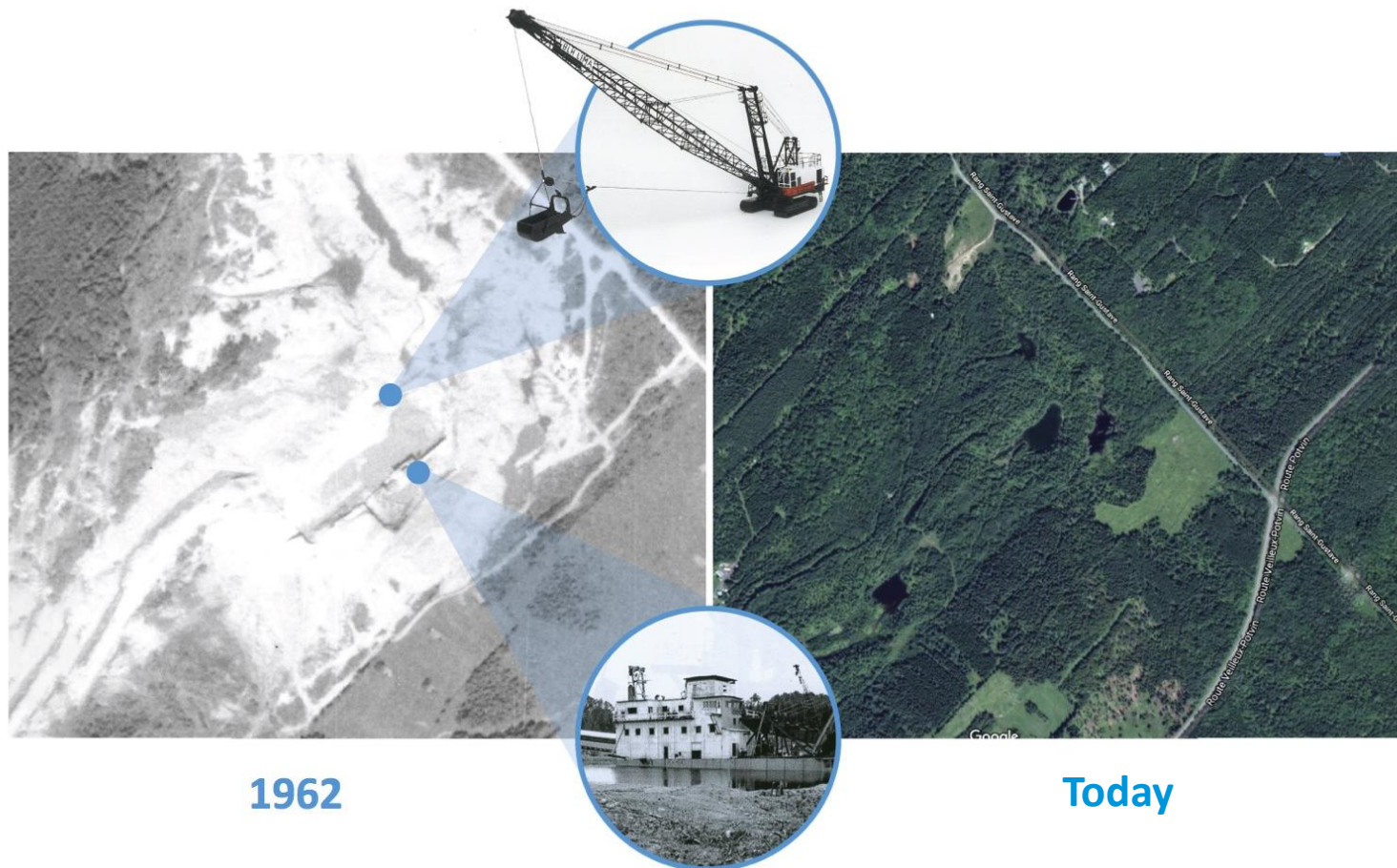
6 KM OF TUNNELS!

AURIFEROUS TILL & SAPROLITE



1960s: LARGEST PLACER GOLD MINING OPERATION IN EASTERN NORTH AMERICA

DRAGLINE STRIPPING & YUBA DREDGING



1962

Today

BEAUCE GOLD PROPERTY: 2 OBJECTIVES

PLACER GOLD EXPLORATION



Expand upon the historical placer gold deposit and evaluate its potential for placer gold mining

LODE GOLD EXPLORATION



Trace the historical placer gold deposit back to its bedrock sources in order to make lode gold discoveries

Placer Gold Deposit Underestimated

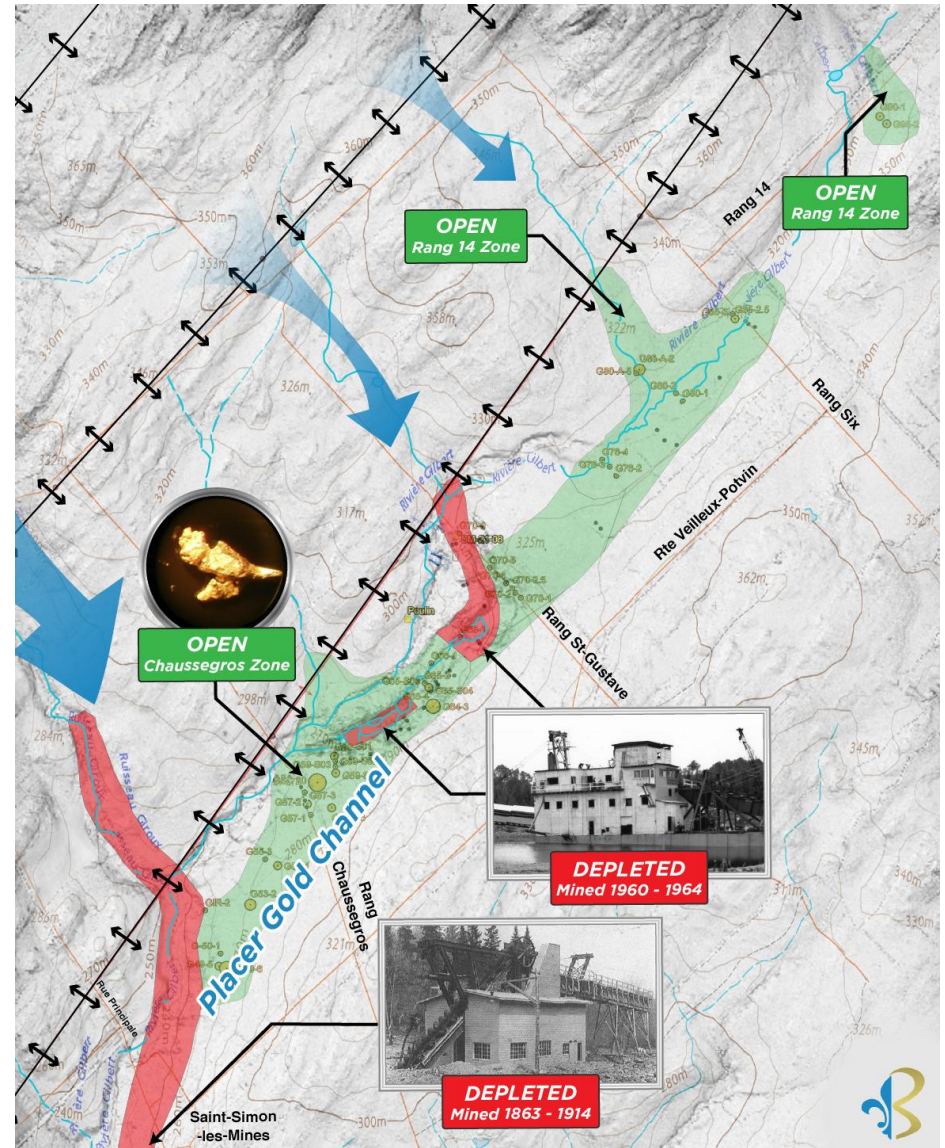
Kilometers of unexplored channel

Tributaries supplied the Gilbert River Valley with Tertiary and Quaternary gold

Origins of gold grains are both detrital and chemically derived

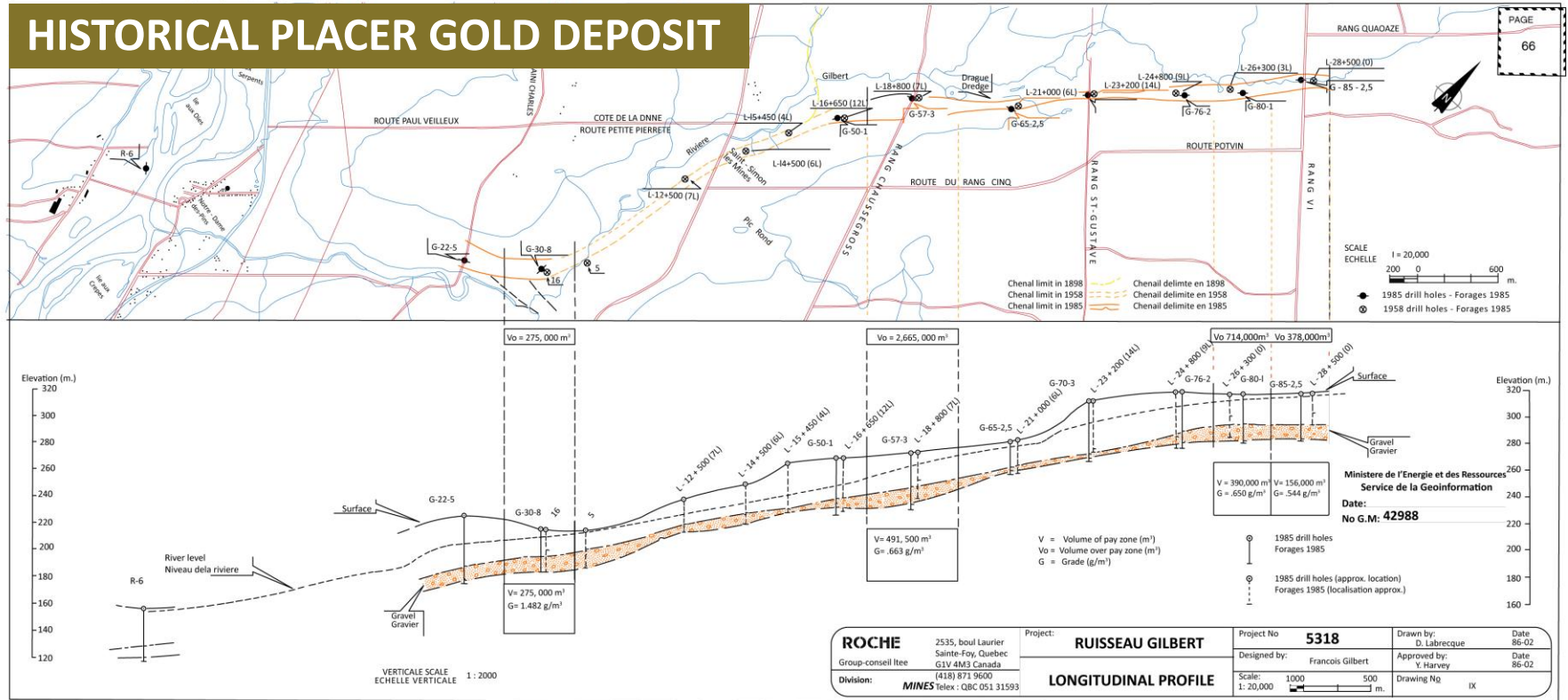
Auriferous Saprolite unit deeper & broader than historical estimates

Possibility of increasing the exploration target of **61,000 ounces** (2,200,000 m³ @ 0.87g Au/m³) and **366,000 ounces*** (2,200,000 m³ @ 5.22 g Au/m³)



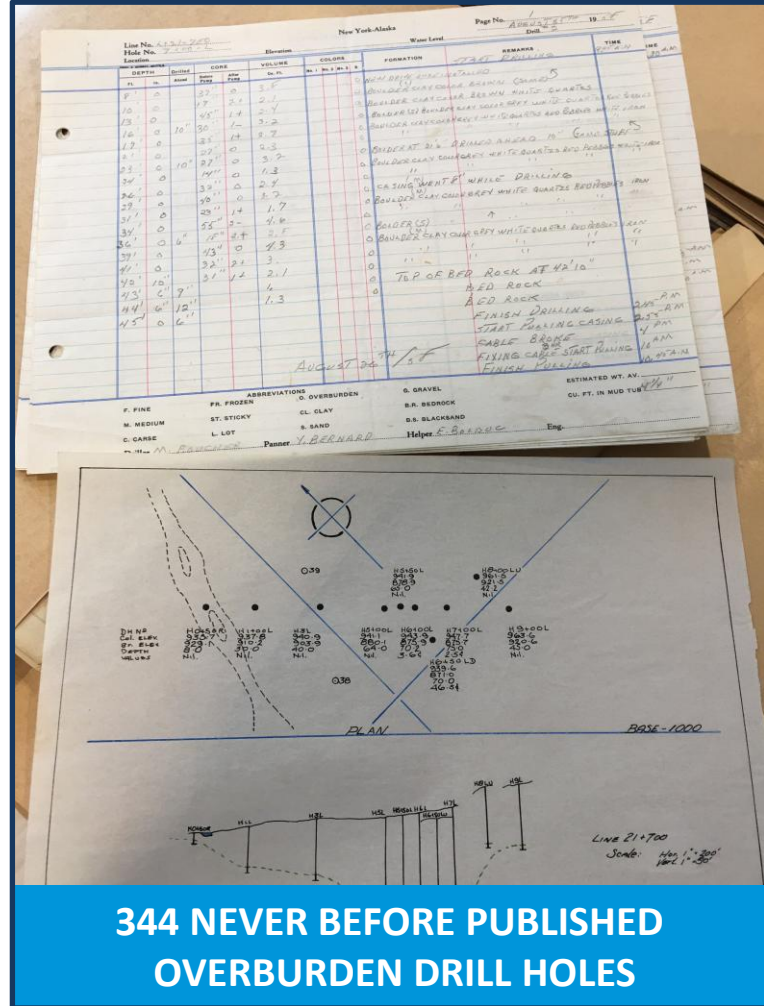
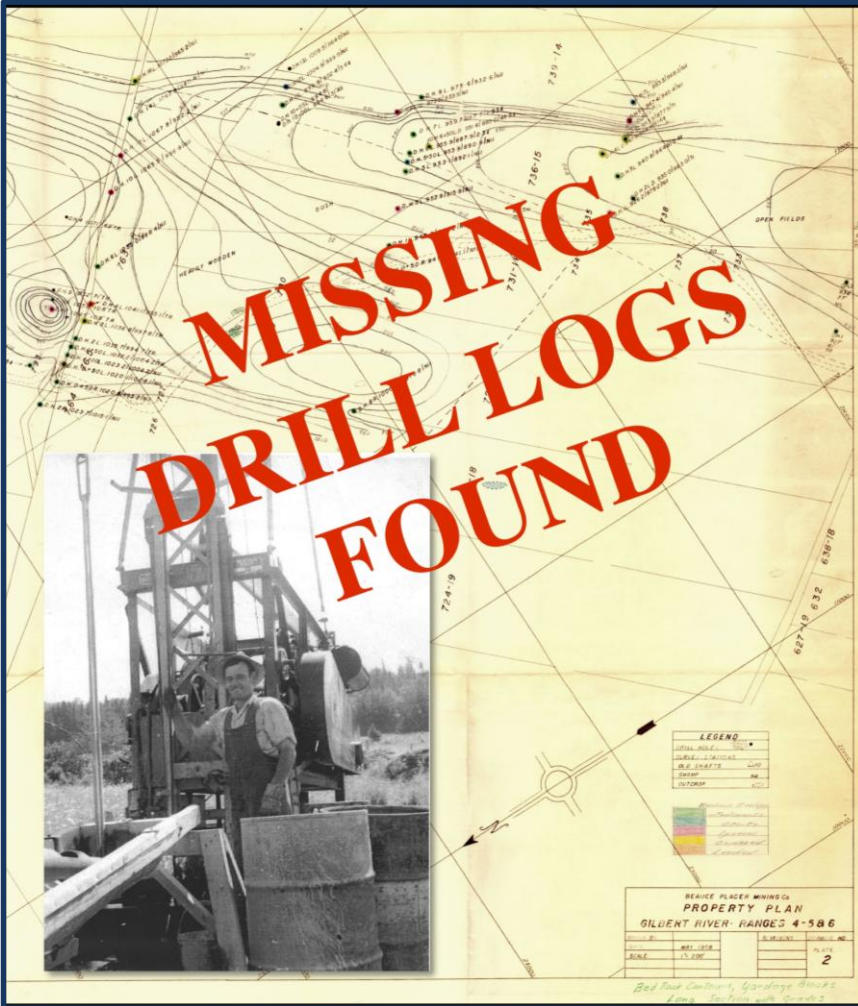
LARGEST HISTORICAL PLACER GOLD DEPOSIT IN EASTERN NORTH AMERICA

Gold Exploration Target for the entire historical placer channel ranges between **61,000 ounces** (2,200,000 m³ @ 0.87g Au/m³) and **366,000 ounces*** (2,200,000 m³ @ 5.22 g Au/m³)
 *source: Beauce NI43-101 Technical Report 2018.



EXPLORATION MILESTONE

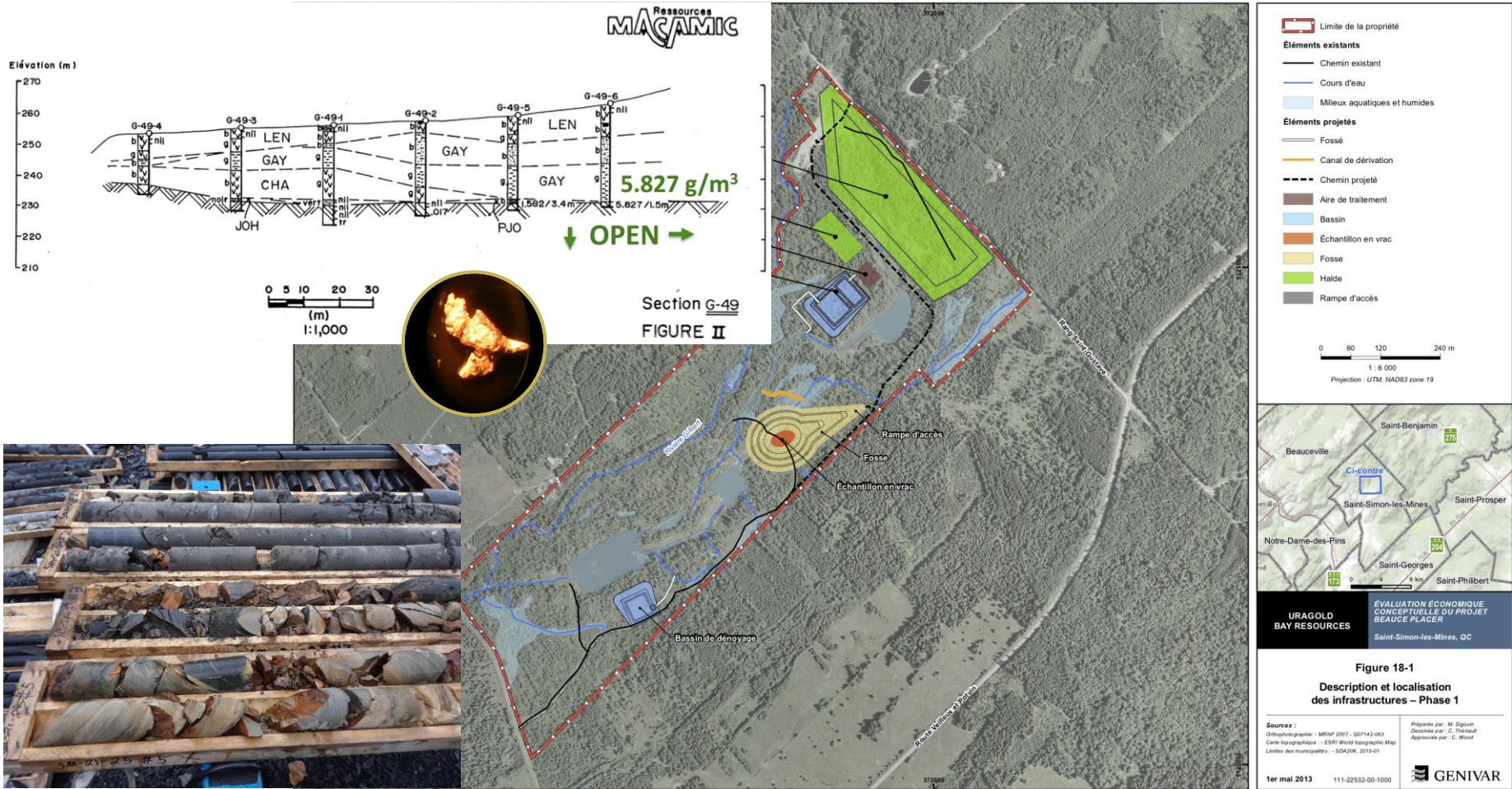
Lost 1950s Overburden Drill Logs & Records Found



**344 NEVER BEFORE PUBLISHED
OVERBURDEN DRILL HOLES**



Historical Placer Gold Deposit Underestimated: Auriferous Saproloite open laterally and at depth

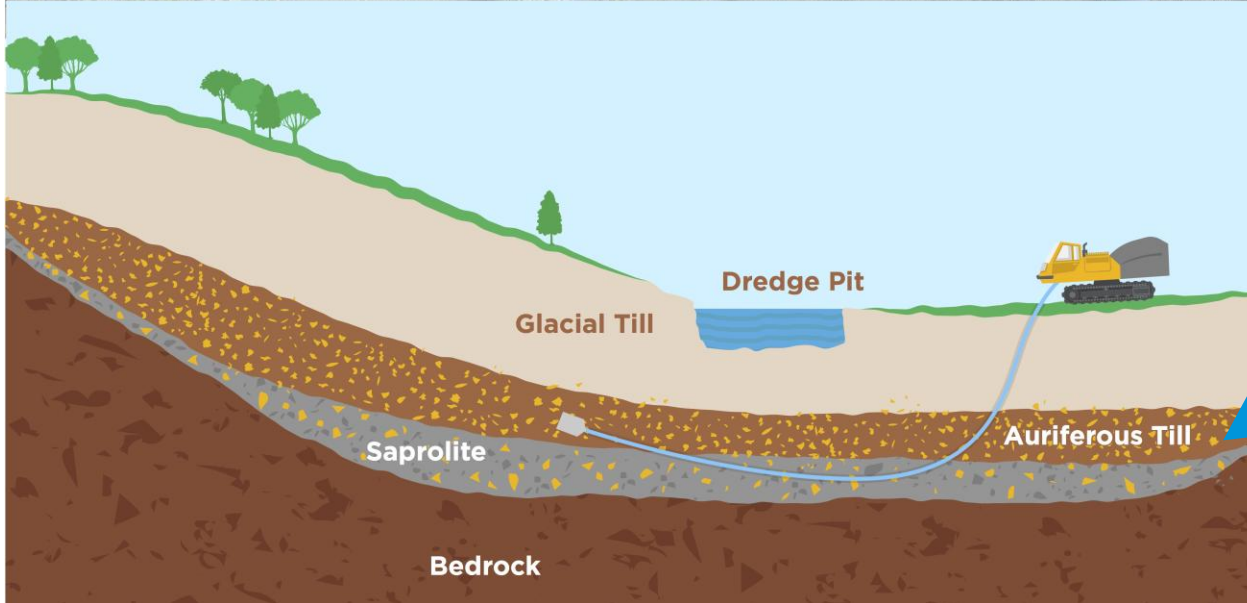


Placer Exploration: Horizontal Directional Drilling



Adapting a technology commonly used in civil engineering projects for placer gold exploration

Use of horizontal direction drilling (HDD) to sample layers of auriferous till and saprolite



2.75
g/m³ Au

BEAUCE GOLD PROPERTY

LODE GOLD EXPLORATION: FIND THE SOURCE!

To trace the historical placer gold deposit back to bedrock sources in order to make lode gold discoveries

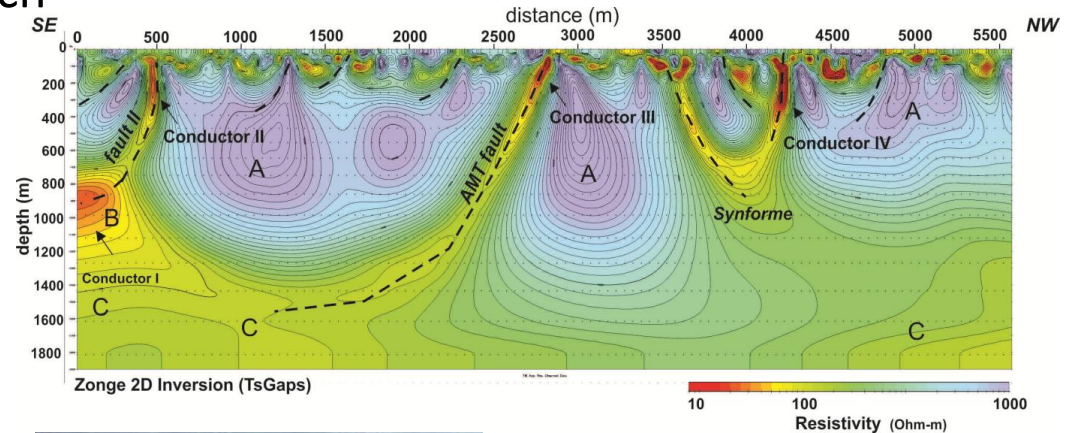
Focus always been on placer mining. Lode gold exploration in the area has been sporadic and inefficient. As a result, almost no available data on the surrounding bedrock geology!

We had to start from scratch, but as you will see, we made breakthrough discoveries!

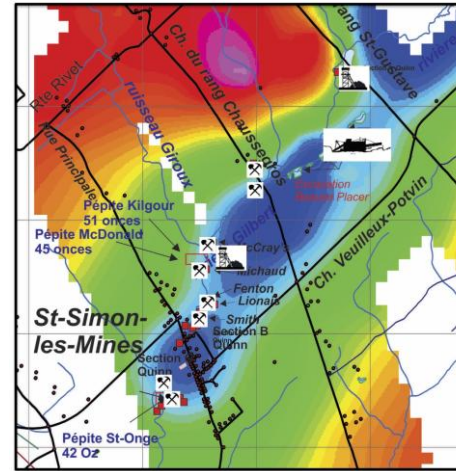


First to extensively explore surrounding bedrock:

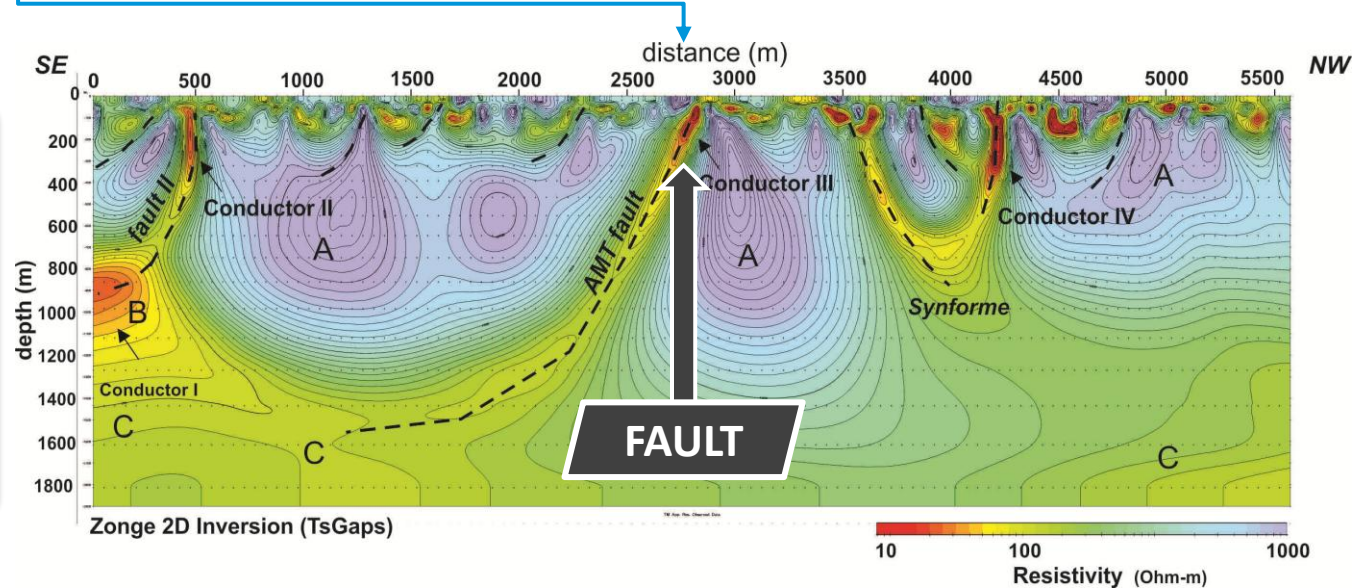
- Historical documentation research
- More than 20 km of Geophysics
- Hundreds of rock samples
- More than 50 trenches dug
- 46 diamond drill holes



EXPLORATION MILESTONE: GEOPHYSICS

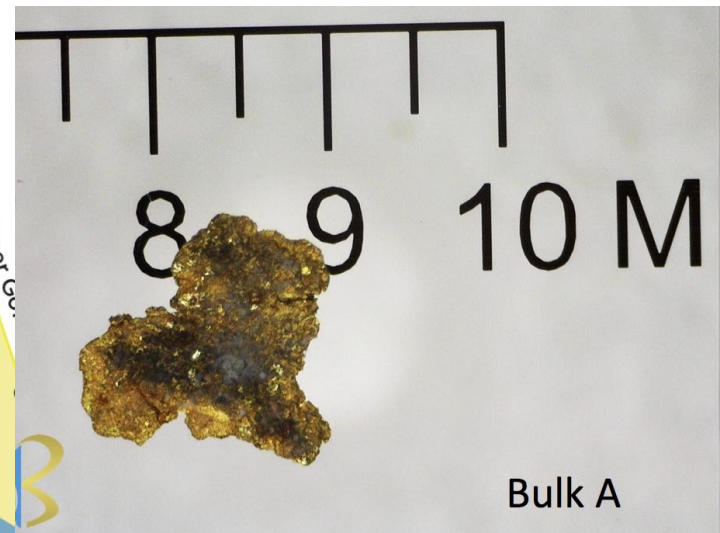
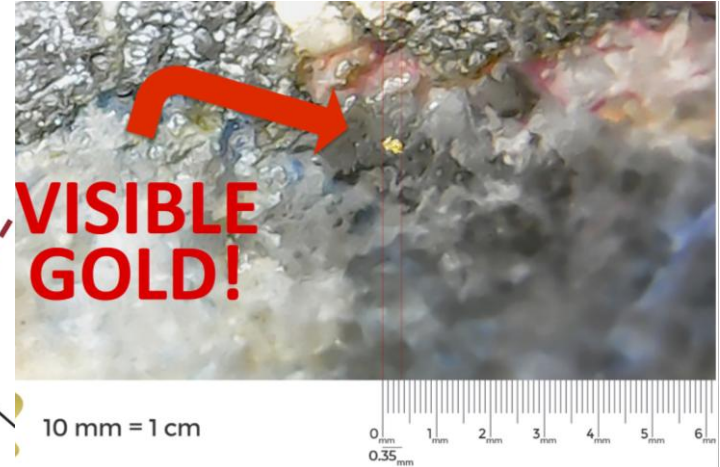
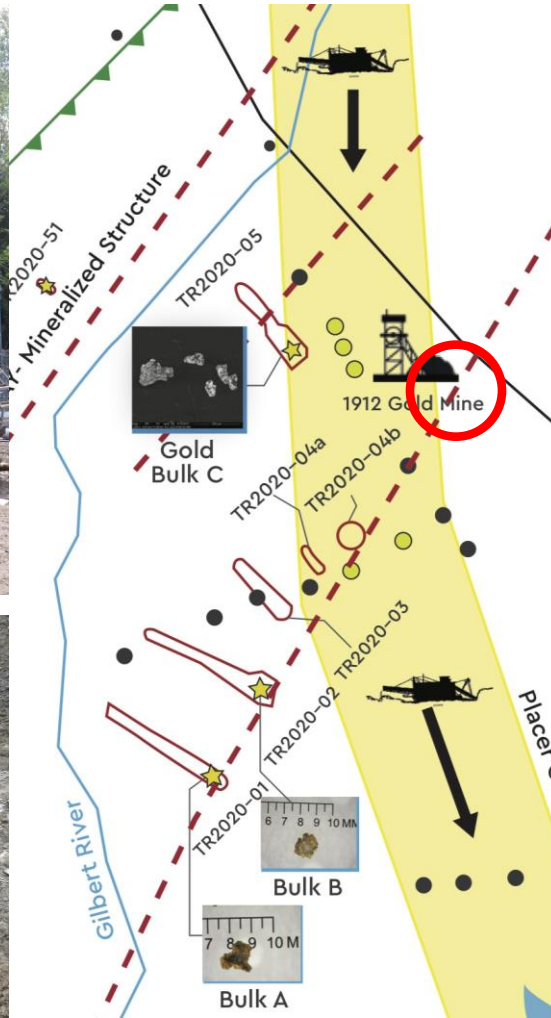


Geophysics identified a major Fault line beneath the Placer gold channel. The Fault line is the contact point between the Beauceville Volcanic Bedrock Formation and the St-Victor Sedimentary Formation



EXPLORATION MILESTONE

Test Drilling & Trenching Confirms Gold in Bedrock



EXPLORATION MILESTONE



Geochemical and Lithology Studies Identifies Antiform as Likely Origins of Placer Gold

A PERFECT MATCH



Bedrock Gold
same as Placer
Gold



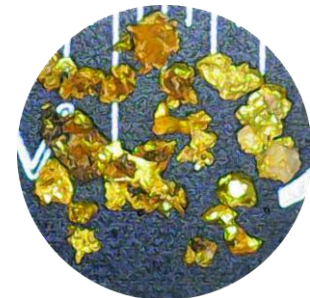
Grondin Outcrop
bedrock gold &
drill cores



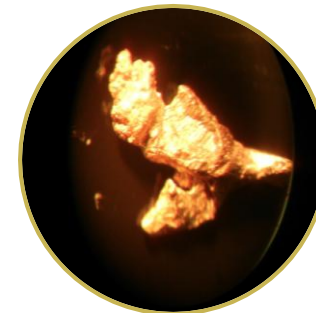
Same
pathfinder
elements
As - Bi - Sb- W



Placer Gold
grains from
saprolite placer
channel

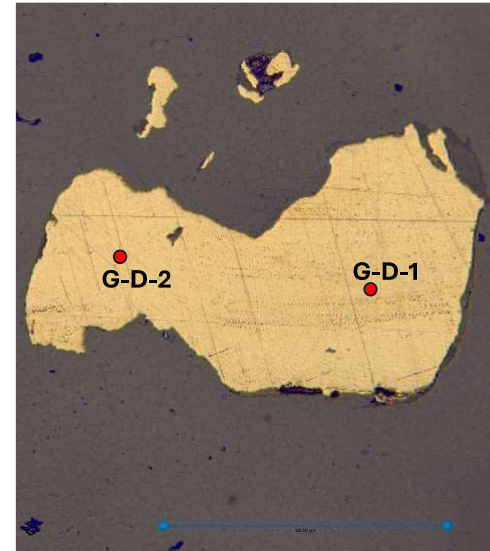
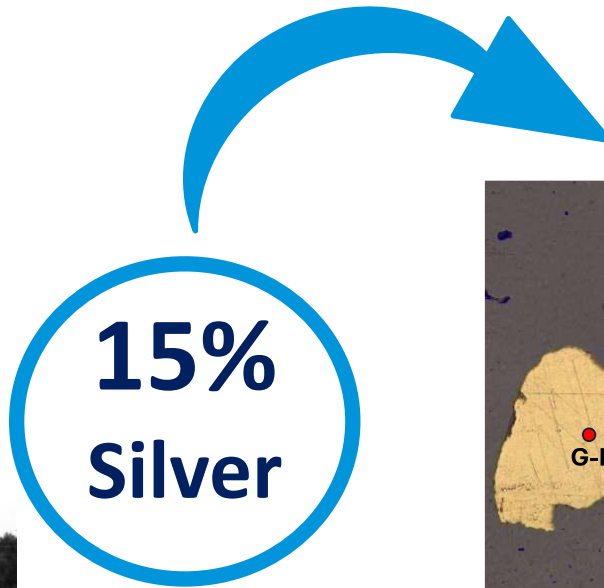


Similar finesse,
Silver to Gold ratios



There's also SILVER..

- Drill Cores – 23%
- Antiform Gold Grains – 15%
- Placer Gold Nuggets – 13%
- 1863 Geological Survey – 13%



ROYAL CANADIAN MINT, OTTAWA

RECEIVED JAN 13 1962

Date 16 January 1962
MEMORANDUM of out-turn of Gold Bullion
 Received for Refining on 3 January 1962, from Beauce Placer Mining Co. Ltd., P.O. Box 132, Beauceville, P.Q.

MINT DEPOSIT No.	DEPOSITOR'S MARKS	WEIGHT		ASSAY REPORT		FINE GOLD OZ.	FINE SILVER OZ.	GROSS VALUE			MINT CHARGES	NET VALUE
		BEFORE MELT OZ.	AFTER MELT OZ.	GOLD	SILVER			GOLD	SILVER	TOTAL		
225		146.400	142.550	819.75	108.	116.855	15.40	4,271.10	16.85	4,287.95	17.25	4,270.70
								Handling charge @ 11¢ per oz. fine gold				12.85
												<u>4,257.85</u>

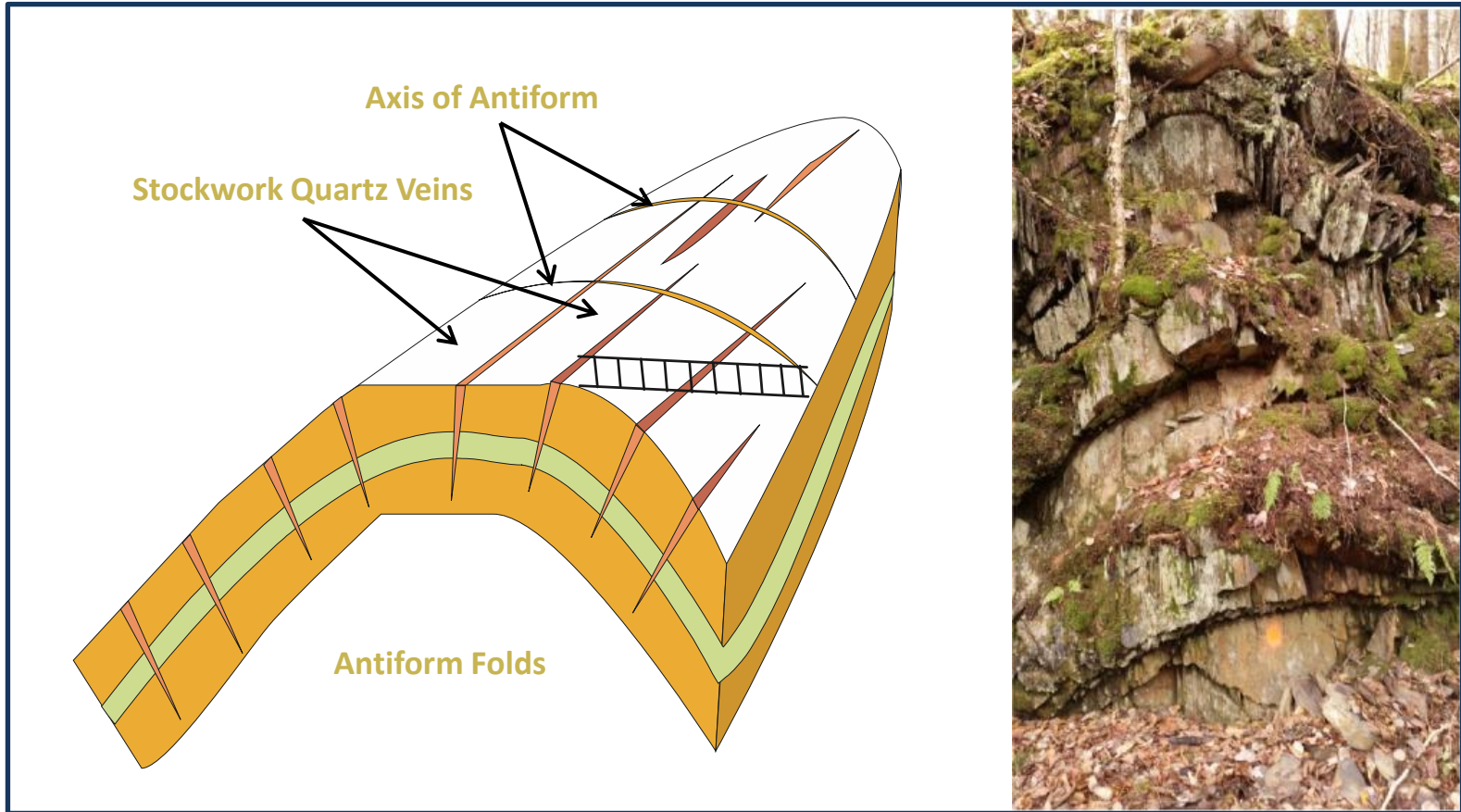
Cheque & one copy of Report to Beauce Placer Mining Co. Ltd., Suite 908 - 330 Bay St., Toronto, Ont.
 One copy of Report to Beauce Placer Mining Co. Ltd., P.O. Box 132, Beauceville, P.Q.

/sp
 for *[Signature]*
 Master

M.O.F. 23

EXPLORATION MILESTONE

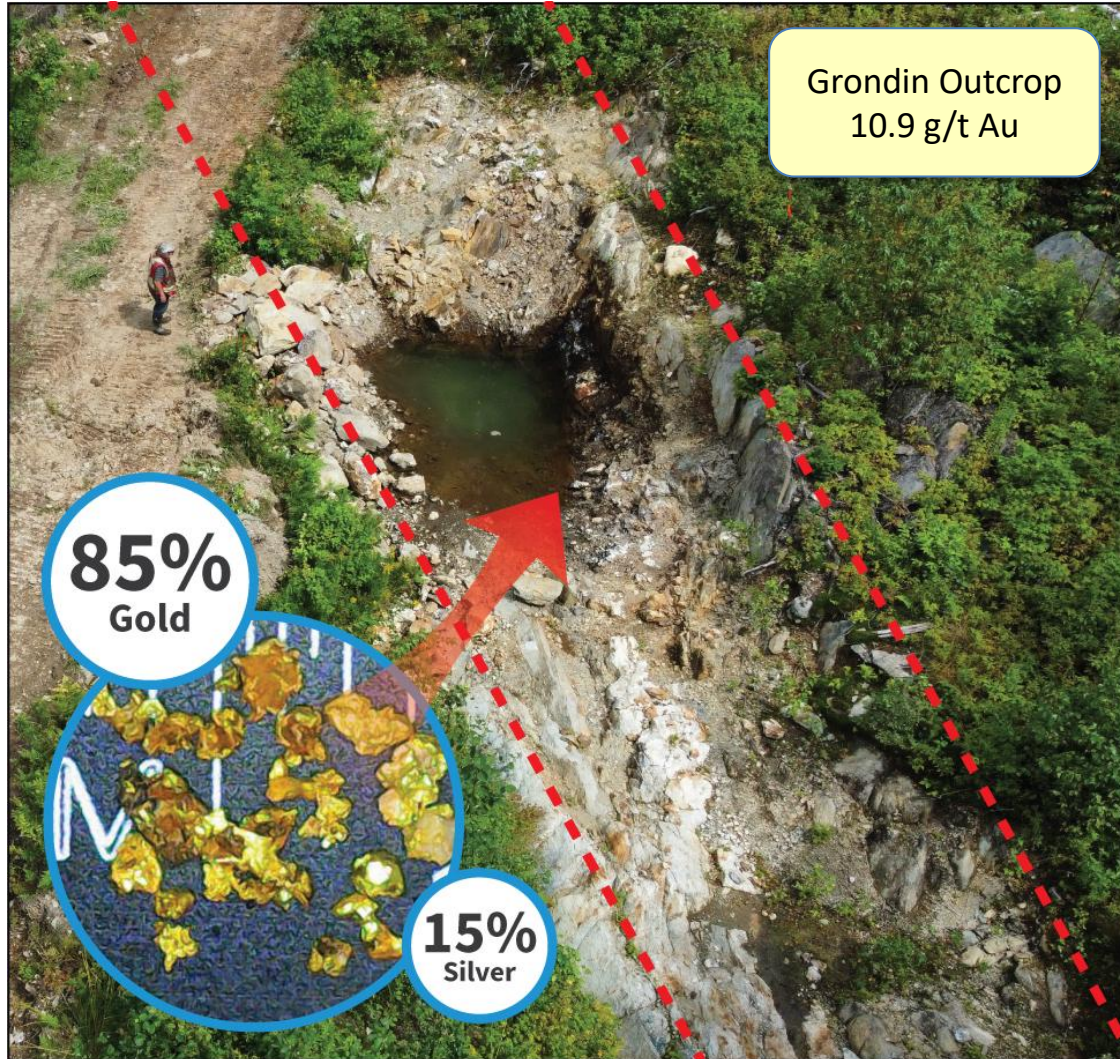
Discovery of Antiform Folds - Saddle Reef Type Formations



Proposed that nuggets & coarse gold formed in quartz vein pockets of hydrothermal breccias in the domes of Antiform Folds

EXPLORATION DISCOVERY

Grondin Zone - Discovery of gold mineralized Antiform Outcrop



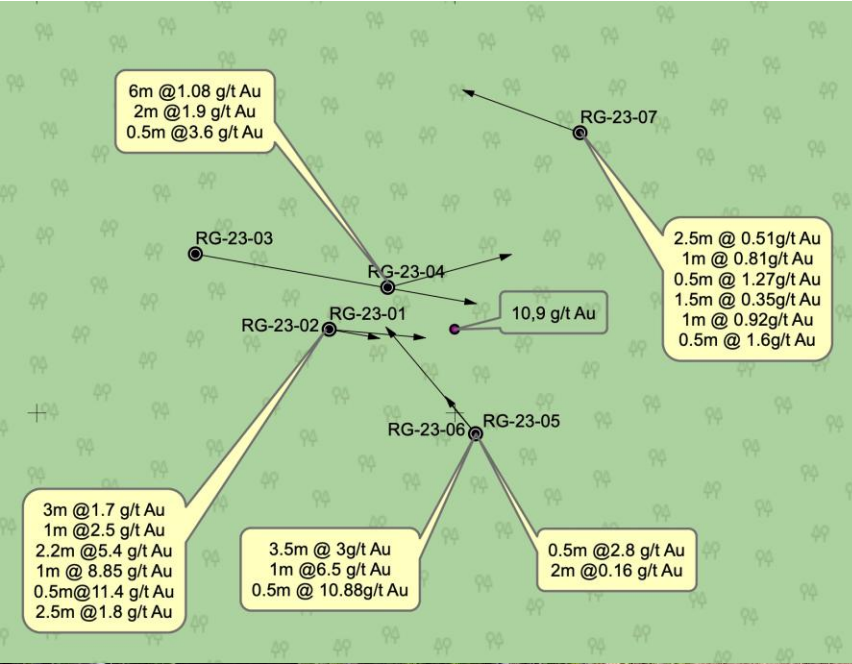
EXPLORATION MILESTONE

Grondin Zone – Diamond Drilling of the mineralized Antiform Structure



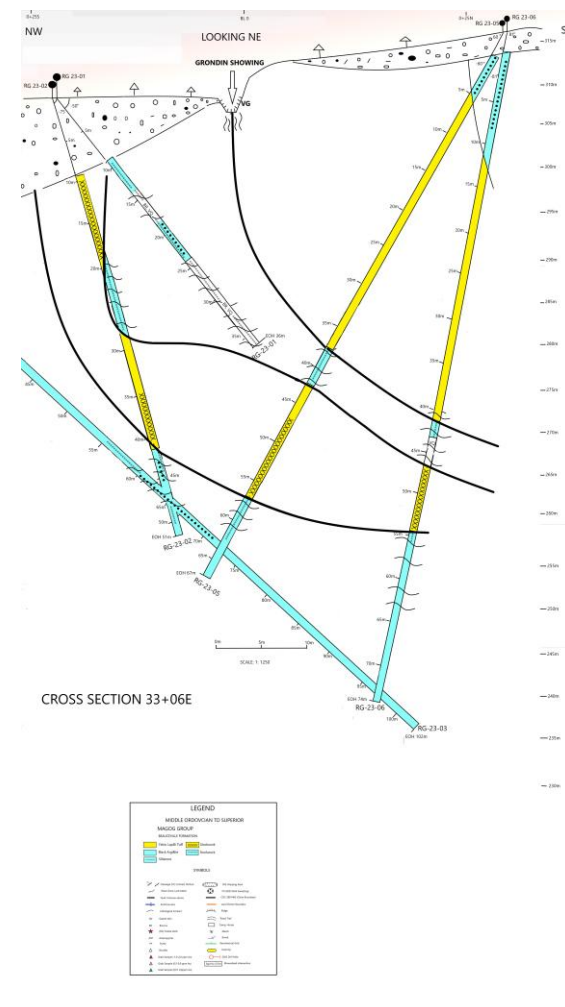
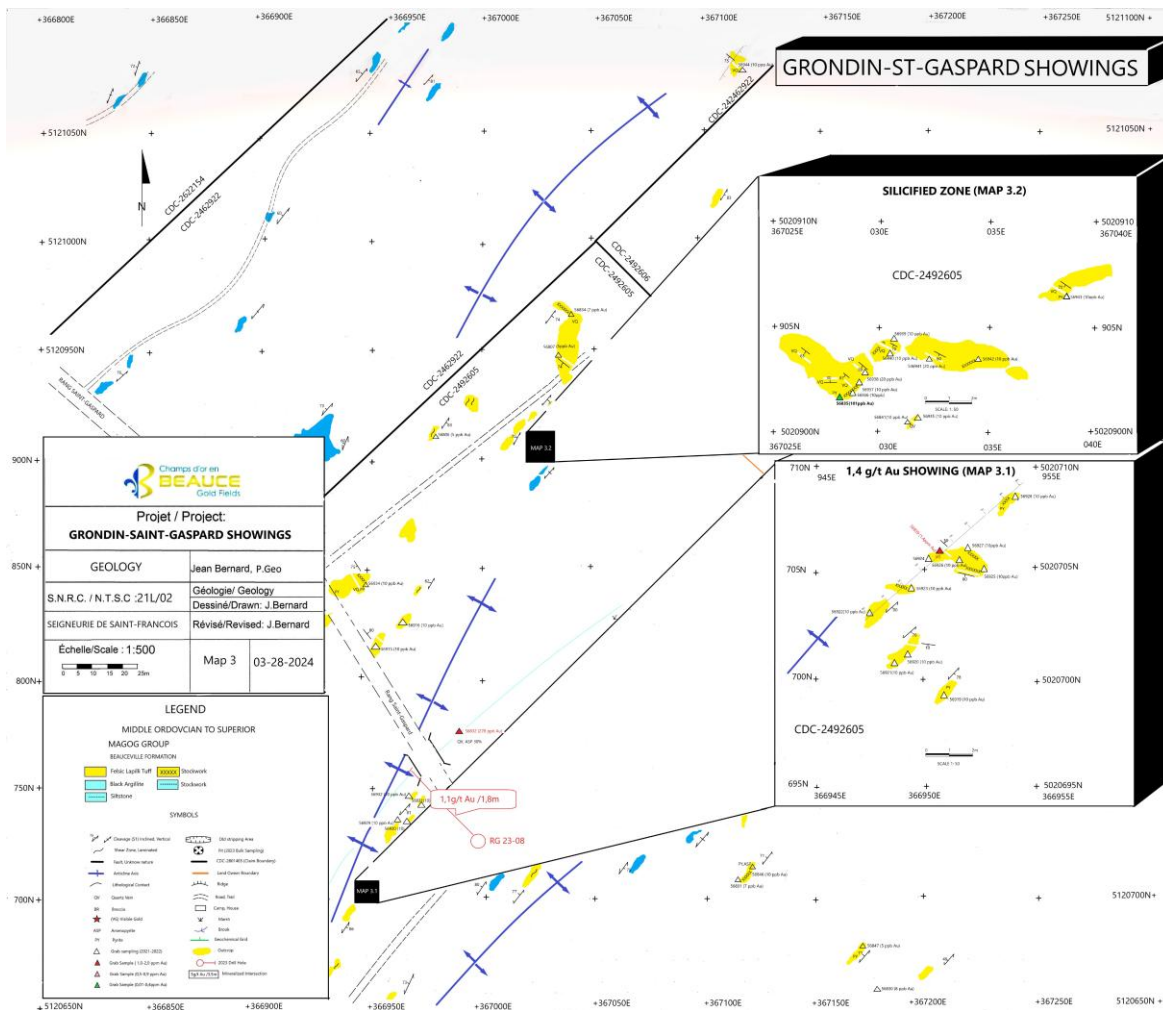
EXPLORATION DISCOVERY

Grondin Zone – Drilling hit a gold mineralized Antiform Structure



EXPLORATION MILESTONE

Antiform Structures Drilled – Orogenic - Stockworks in Felsic Lapilli Tuff

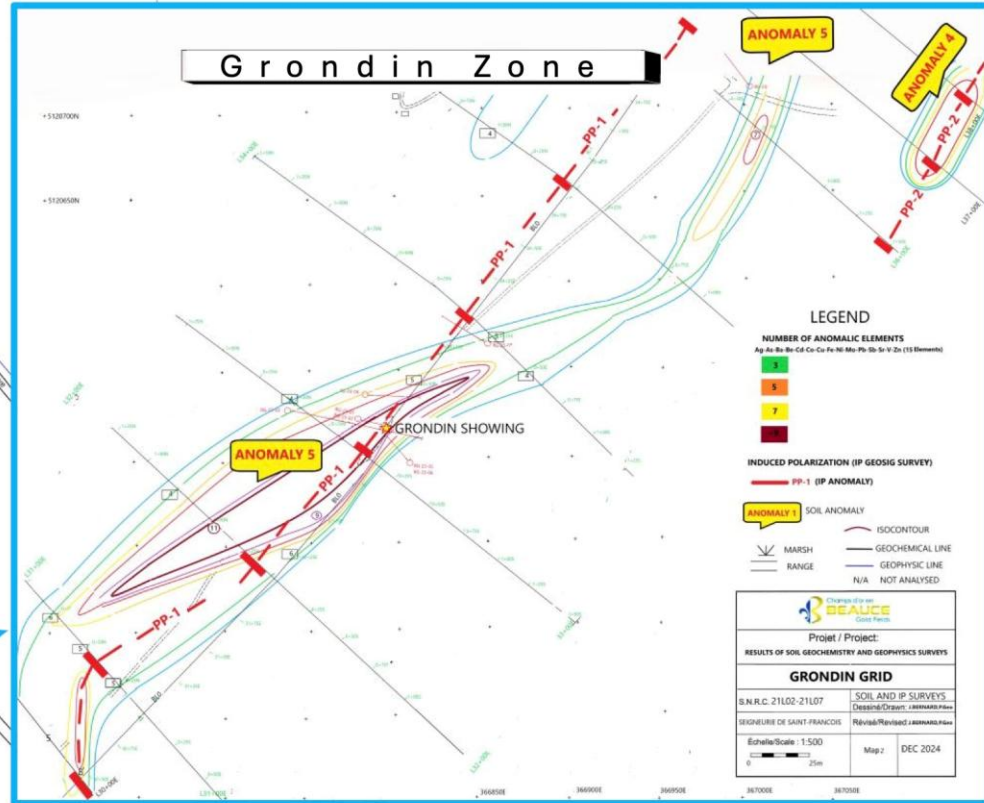
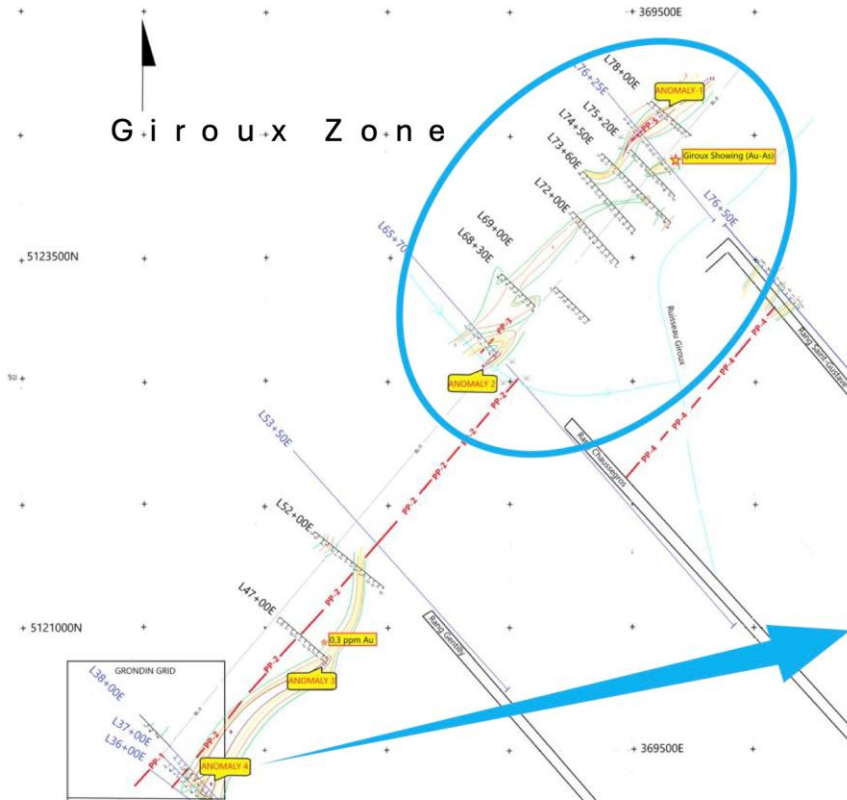


EXPLORATION MILESTONE

IP & Geochem traces Antiform Structures for 8 KM Drilled

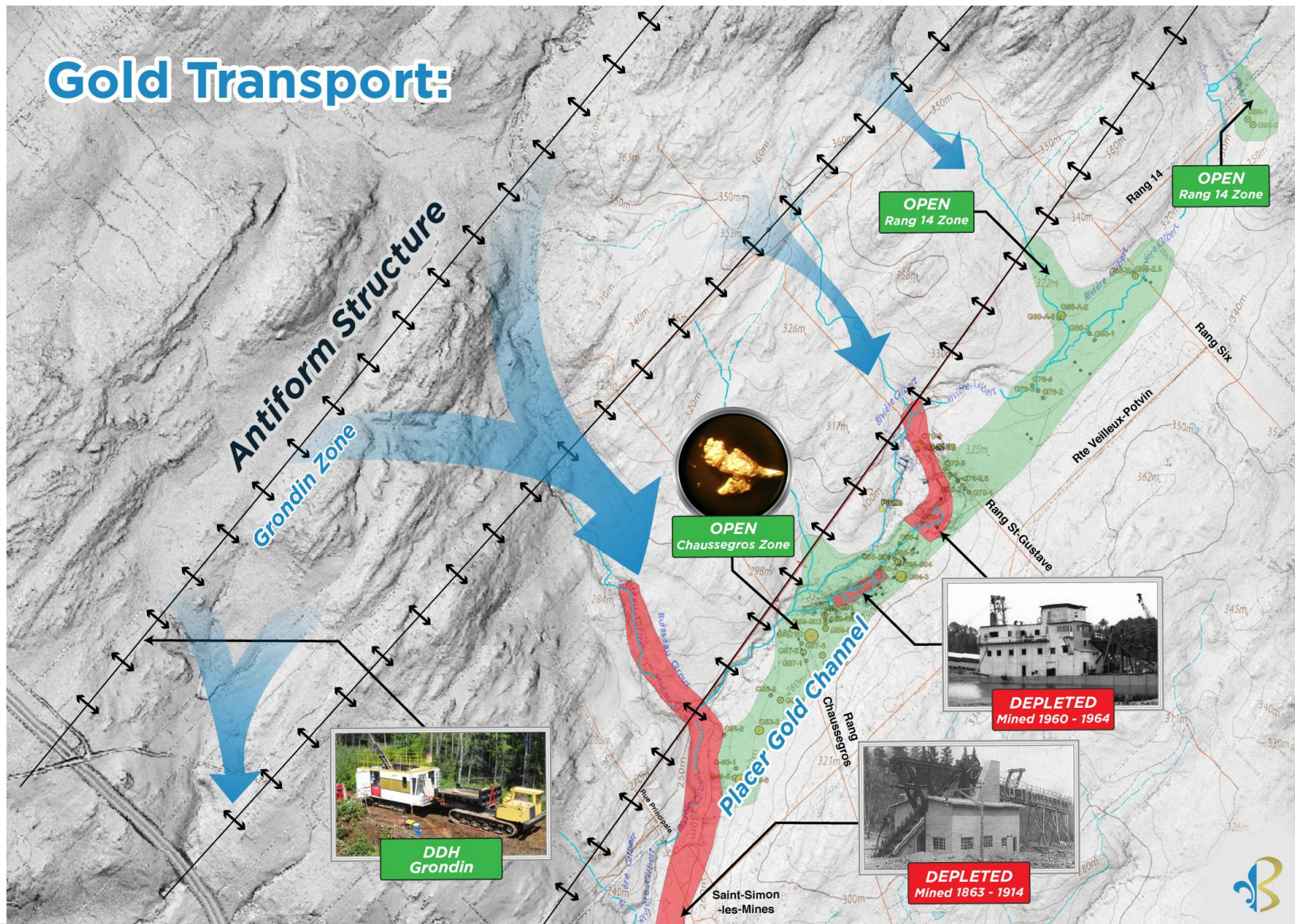


GEOCHEMICAL SOIL AND IP ANOMALIES

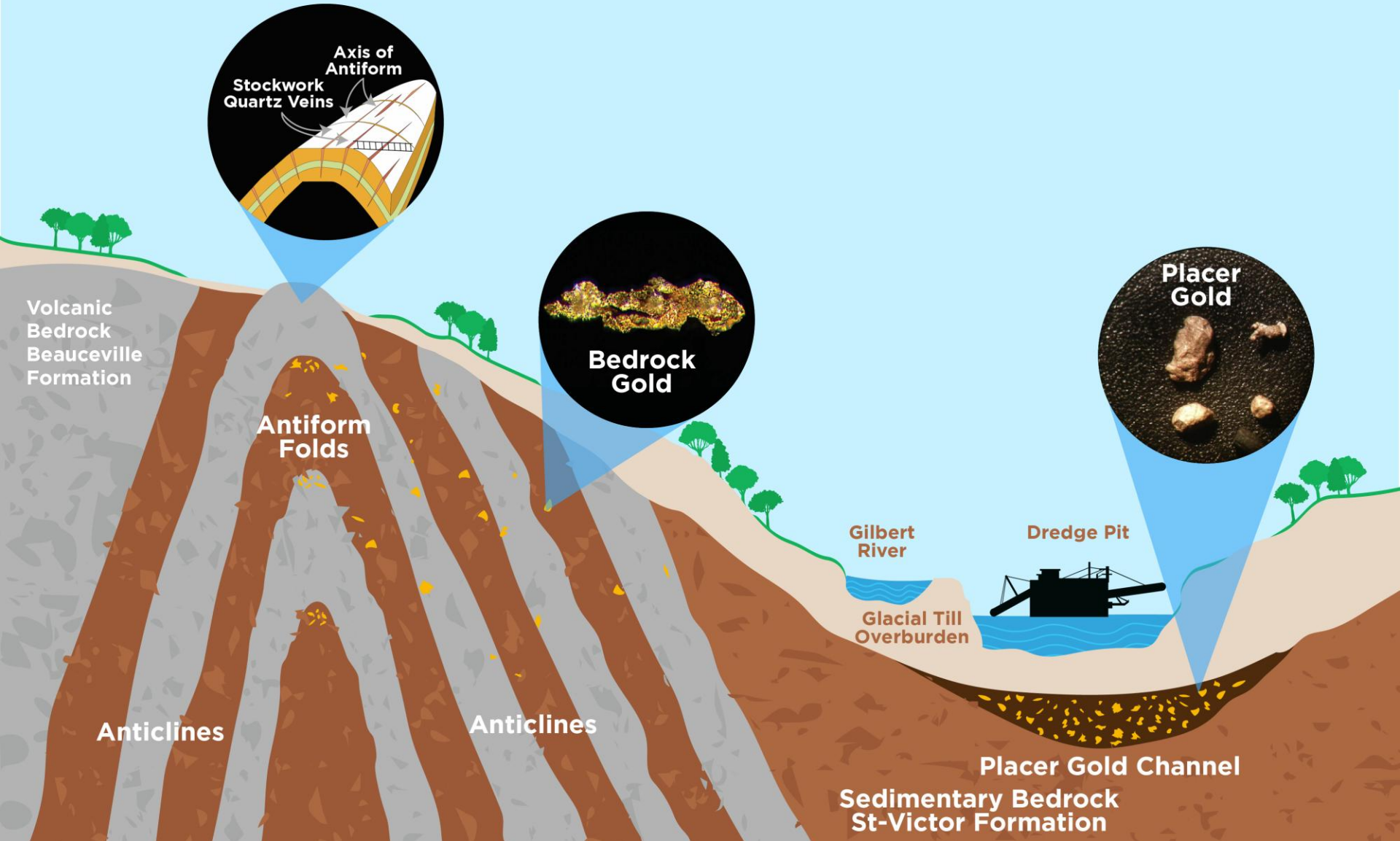


BREAKTHROUGH DISCOVERY

Saddle Reef Formation - Antiform Structures likely source of Placer Gold



GEOLOGICAL MODEL - SADDLE REEF FORMATION





SADDLE REEFS
BEAUCE VS BENDIGO



Bendigo region of Australia, which has so far produced 22 million ounces of gold, holds astonishing historical similarities to the Beauce

BENDIGO vs BEAUCE

Placer gold found unexpectedly



1851

Gold nuggets discovered by women washing clothes in Bendigo creek

Bendigo

Beauce

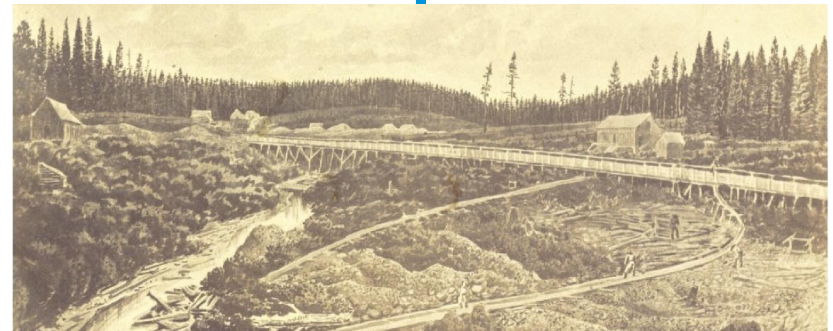
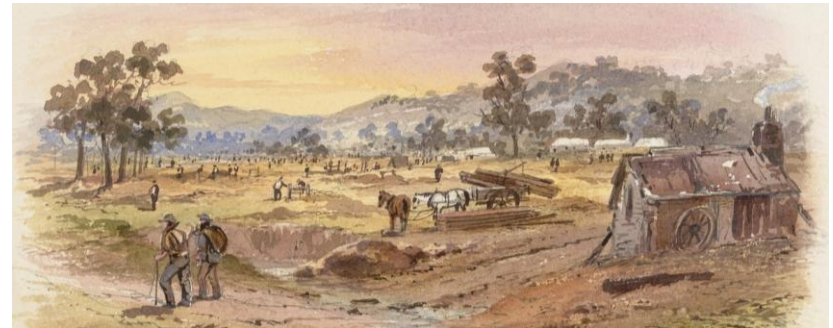


1847

Gold nugget discovered by Clothide Gilbert as she walked her horse across the Gilbert creek

News led to a placer gold rush

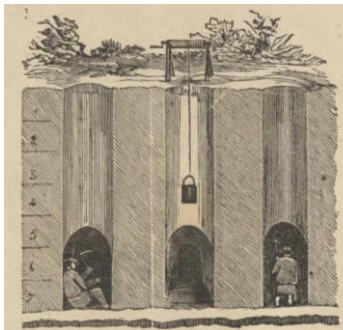
1850s – Rapid expansion of alluvial mining with of thousands of miners working



BENDIGO vs BEAUCE

As surface alluvial gold ran scarce, miners dug deep shafts and tunnels to get to richer placer gold deposits

Both regions produced some of the largest gold nuggets



Section of a Gold Mine At the Bendigo Diggings



1869
the Welcome Stranger Nugget over **2,520 troy ounces**

Bendigo

Beauce



1866
McDonald Nugget **45 ounces**

BENDIGO vs BEAUCE

By the early **1910s**, gold production petered out

The Saddle Reefs – are quartz structures that formed in the anticlines of the folded bedrock. Believed to be the source of the gold placers



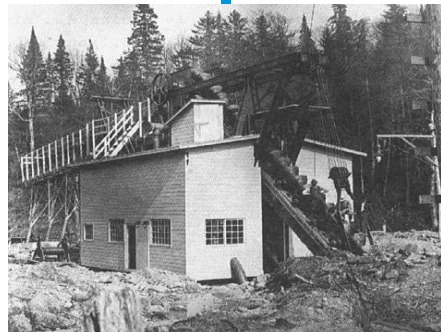
Underground placer and lode gold (Saddle Reefs) mines



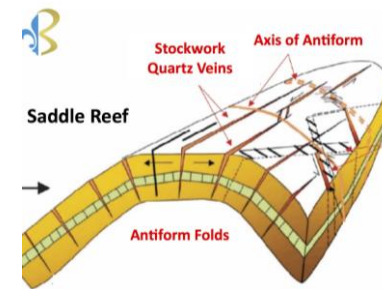
Bendigo Saddle Reefs proved to be incredibly rich in gold and were mined extensively from the 1850s onward

Bendigo

Beauce



Placer gold mines



In 2021, Beauce Gold Fields discovers Saddle Reef formations

BENDIGO vs BEAUCE

Today



Fosterville Gold Mine, Bendigo

The Fosterville mine is a high-grade, low-cost underground gold mine.

Bendigo

Beauce



Beauce Gold

Fields drill program discovered a high-grade gold anticline structure of a Saddle Reef outcrop.

BEAUCE GOLD PROPERTY: EXPLORATION GOING FORWARD

DRILL FOR LODE GOLD DISCOVERIES

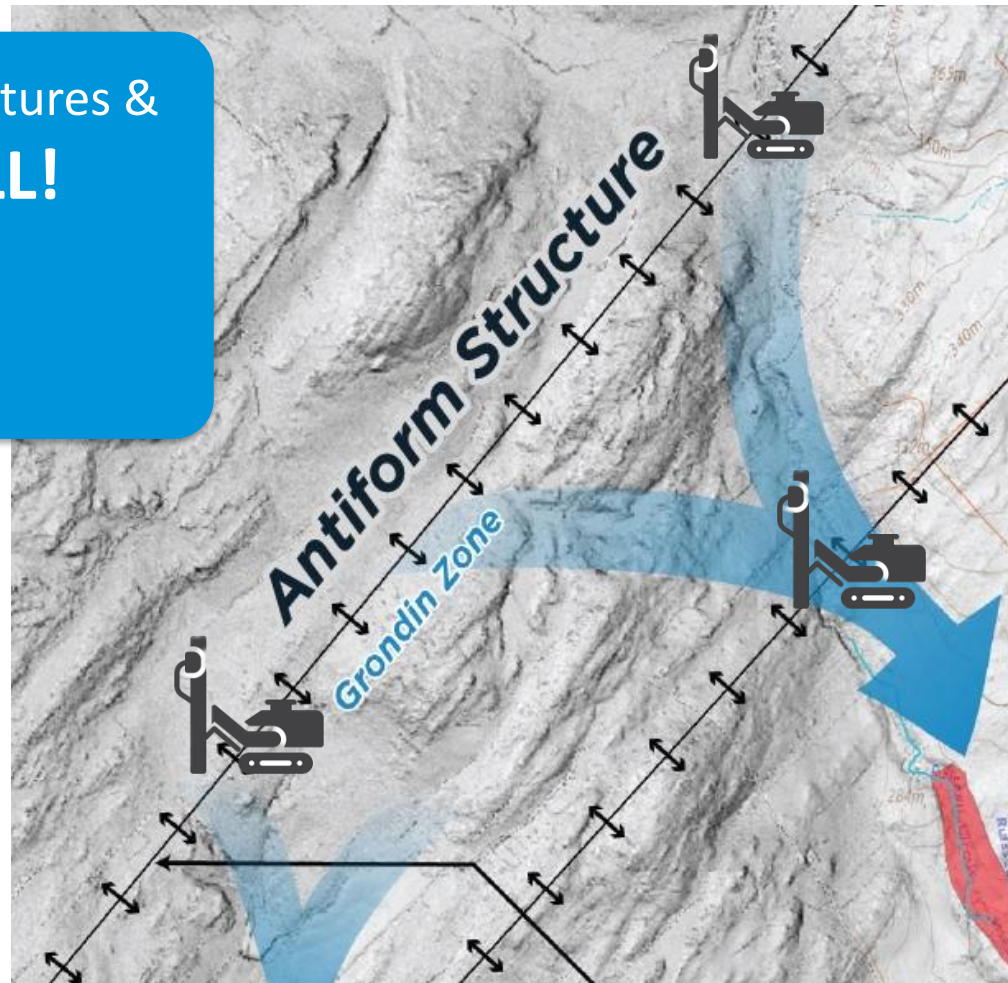
Follow the Antiform Structures &
DRILL, DRILL, DRILL!



Use of geophysics to delineate antiform structures

Diamond drill the structures along strike and at depth

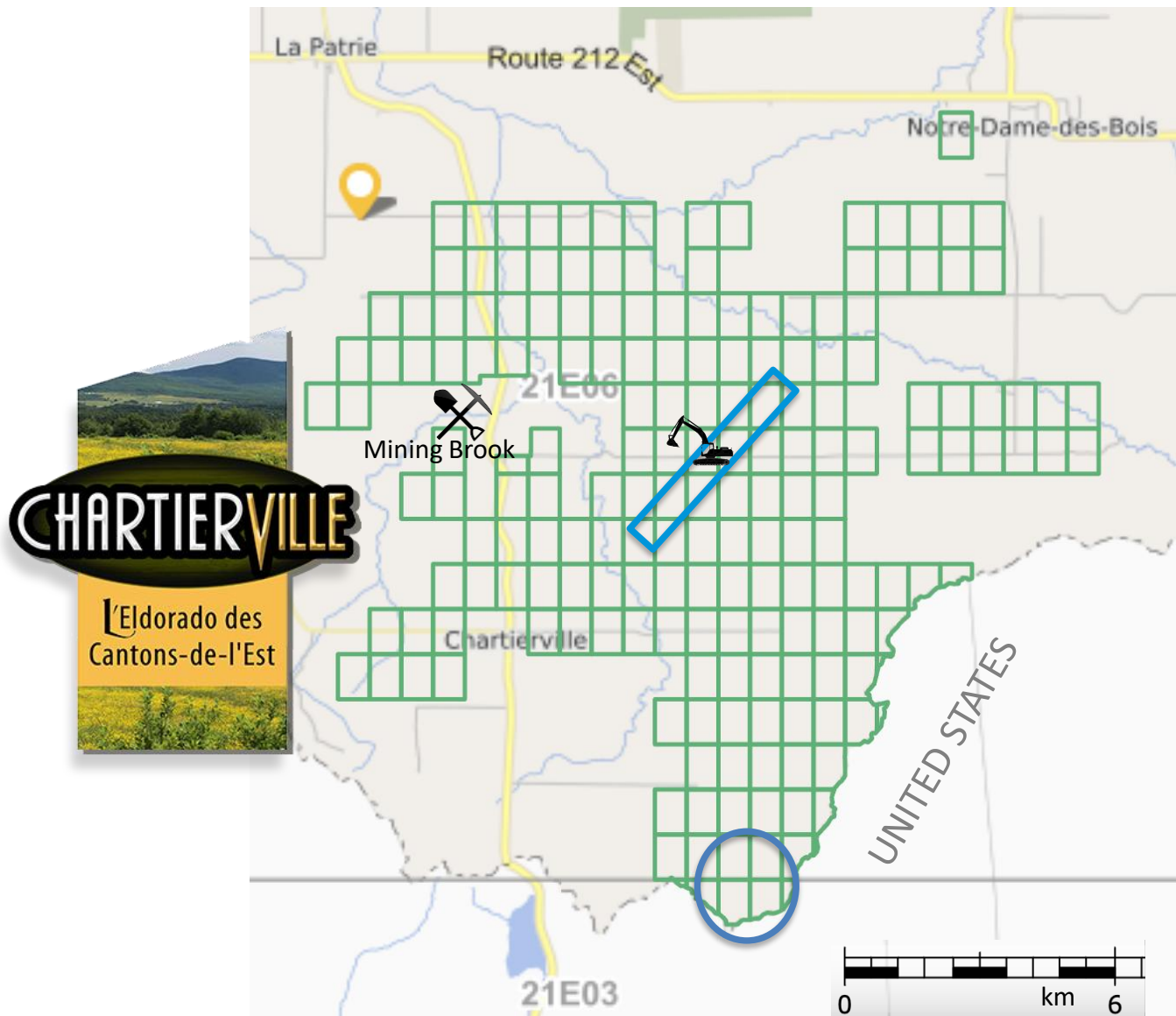
Saddle Reef model suggests the possibility of high-grade pockets at depth in axis of antiform folds



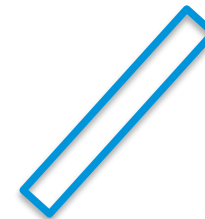
DITTON PROPERTY



DITTON PROPERTY – CLAIM BLOCK



Sand & Gravel Quarry



Paleoplacer Channel



Emberton Property

DITTON PROPERTY

- Gold discovered in the late 1800s by Archibauld “Archie” Annance. An Abinaki First Nations businessman and prospector.
- Late 19th century placer gold district
- Important potential for lode gold discoveries
- Up to 2g/m³ Au dredged from sand pits
- Historical placer gold deposits along Bella Fault line
- Potential placer gold production



The Ditton property is located in southern Quebec limited to the southwest by the American border of New Hampshire.

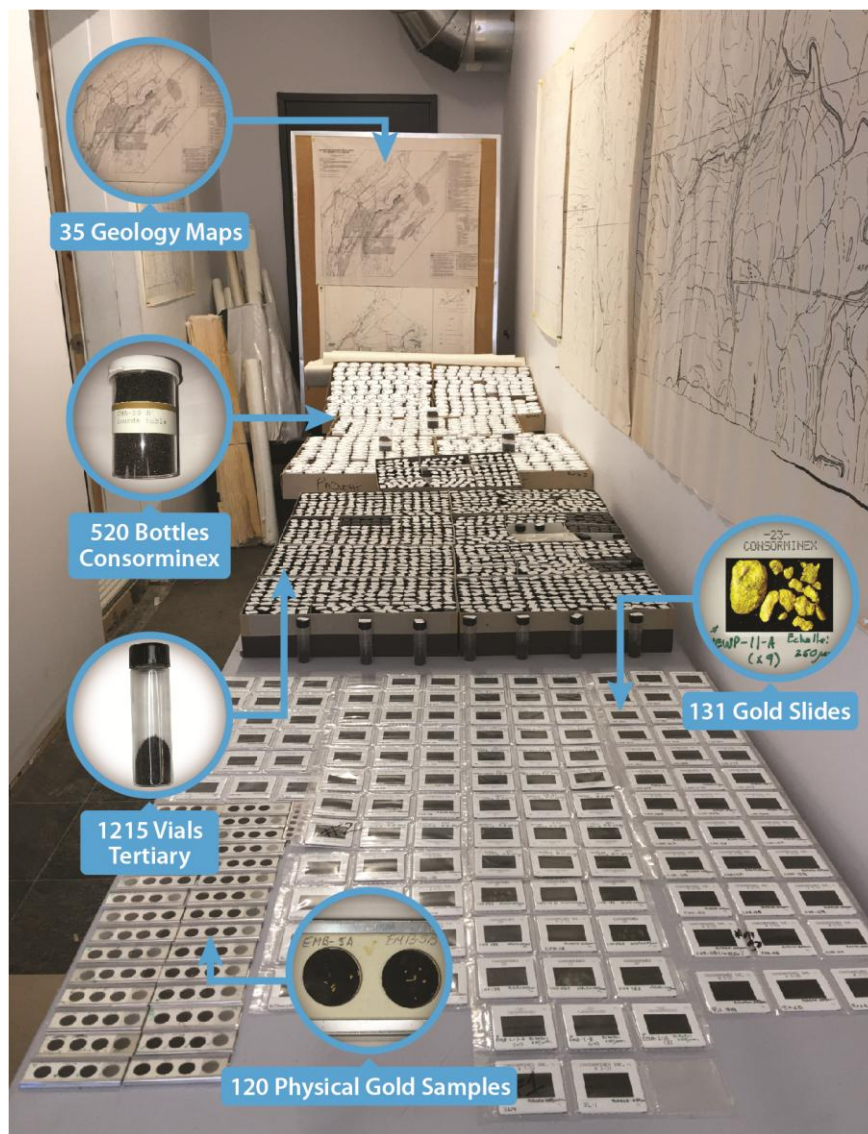
The property extends for at least 10 km along the axis of the Bella Fault. It is divided into three historic placer gold districts: the Ditton, the Mining Brook & Emberton.

The Bella fault line, which is the major structural element of the Ditton property, is in contact between the Compton and Frontenac Formations. Observations suggest several intrusive phases that would be favorable to the establishment of gold mineralization.

DITTON PROPERTY

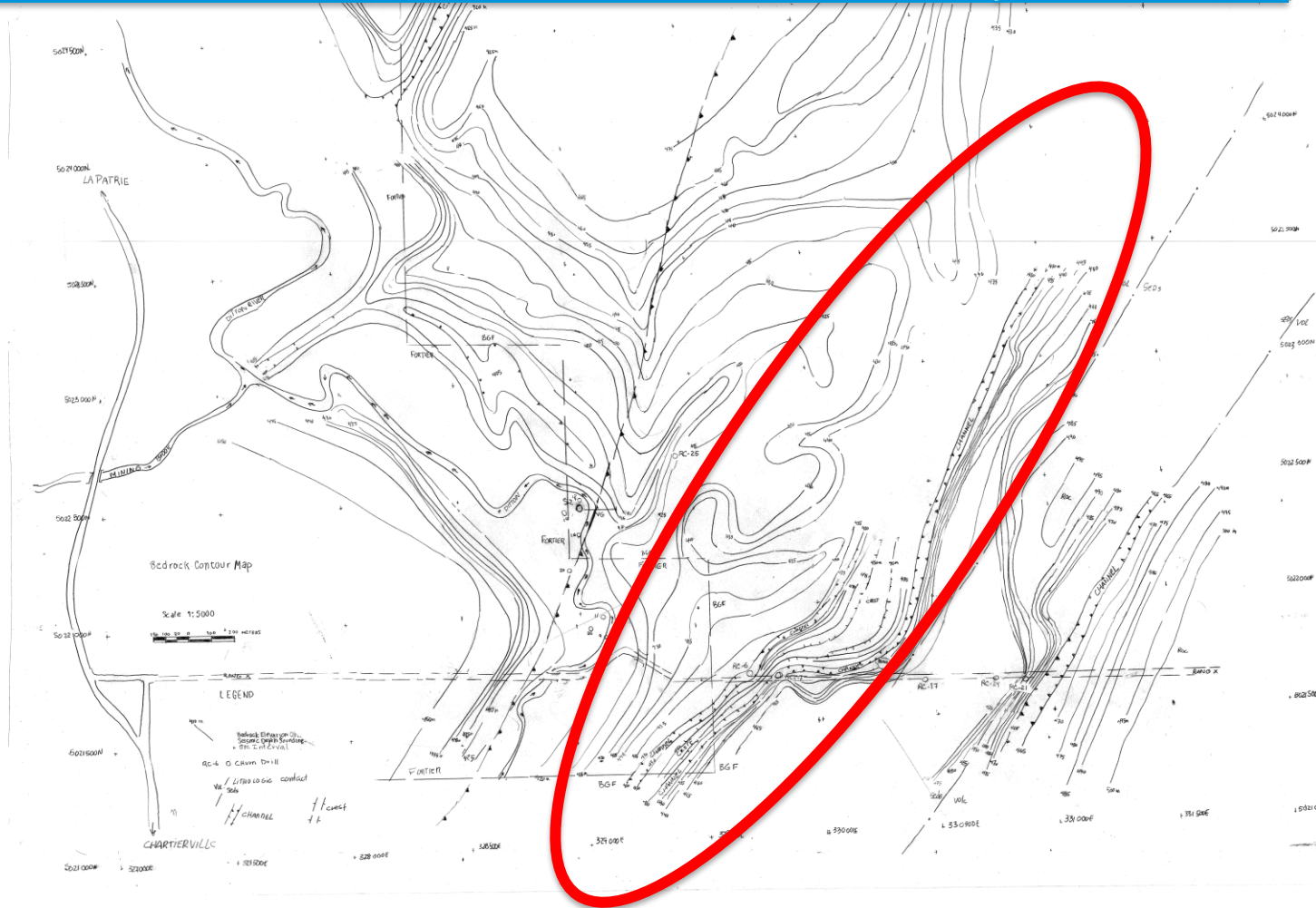
Never-before-published
historical exploration data

- Acquired from a local Prospector
- 1,700 Concentrates
- 120 physical gold samples
- 35 maps



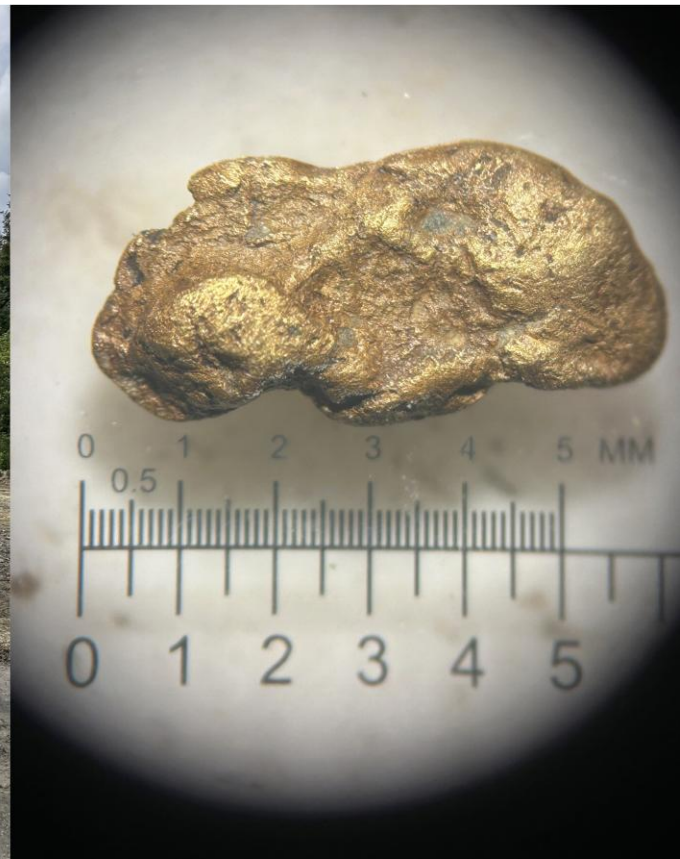
DITTON PROPERTY

New discovery of an unexplored placer gold deposit:
A North American first in over a century



Ditton Exploration 2022 - 2023

10 Sonic Drill Holes, 180 Bulk Samples and 4 Lines of Geophysics



DITTON: Tertiary and Quaternary Placer Gold



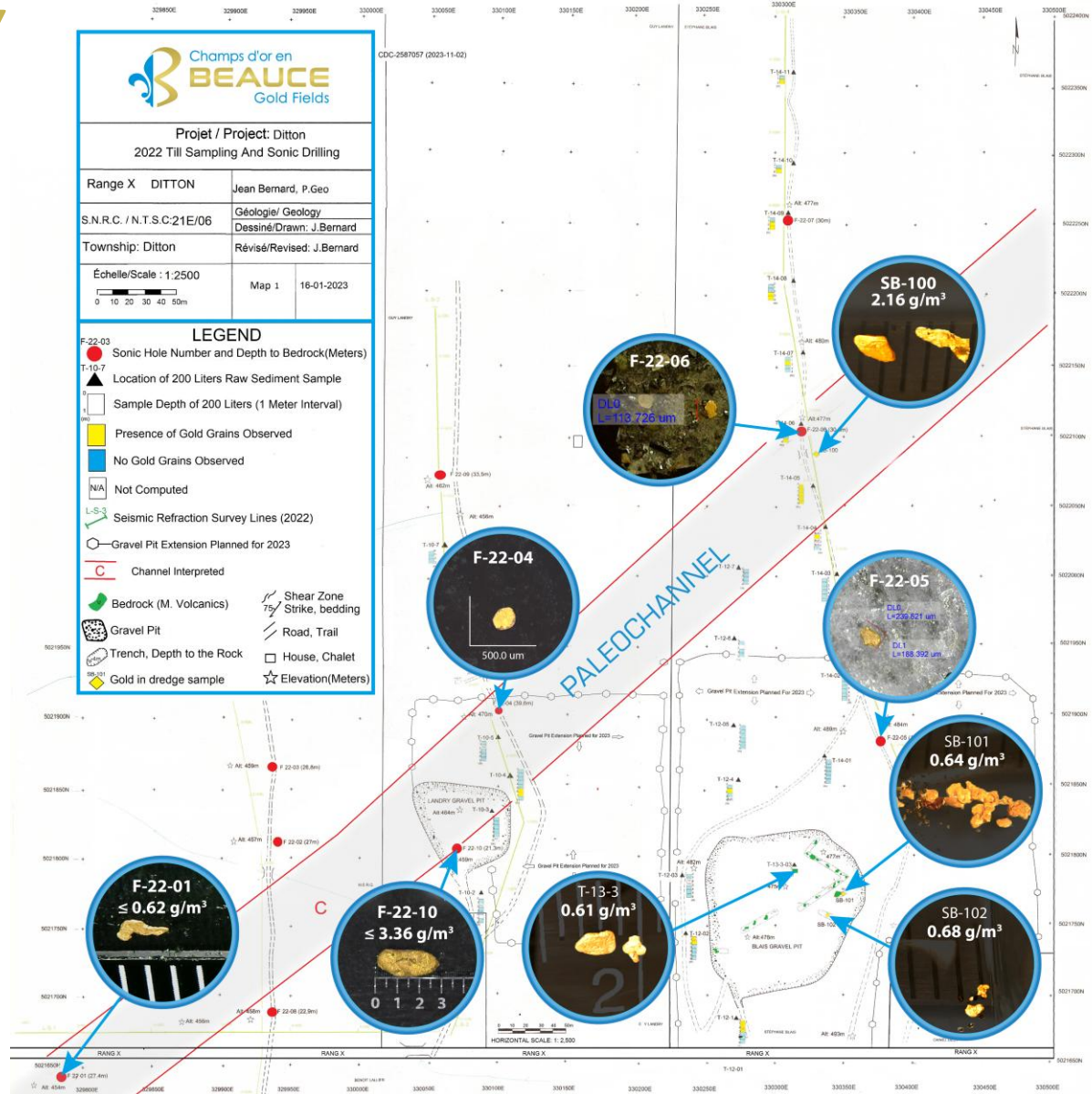
DITTON PROPERTY

2022 exploration results confirms gold anomaly in paleoplacer channel

Placer channel open to the South, East, SW & NE

Placer gold identified in both Tertiary & Quaternary deposits

Placer gold potentially derived from a proximal lode gold source



DITTON PROPERTY - Potential Placer Gold Production

Low Capex, requires only gravity & water



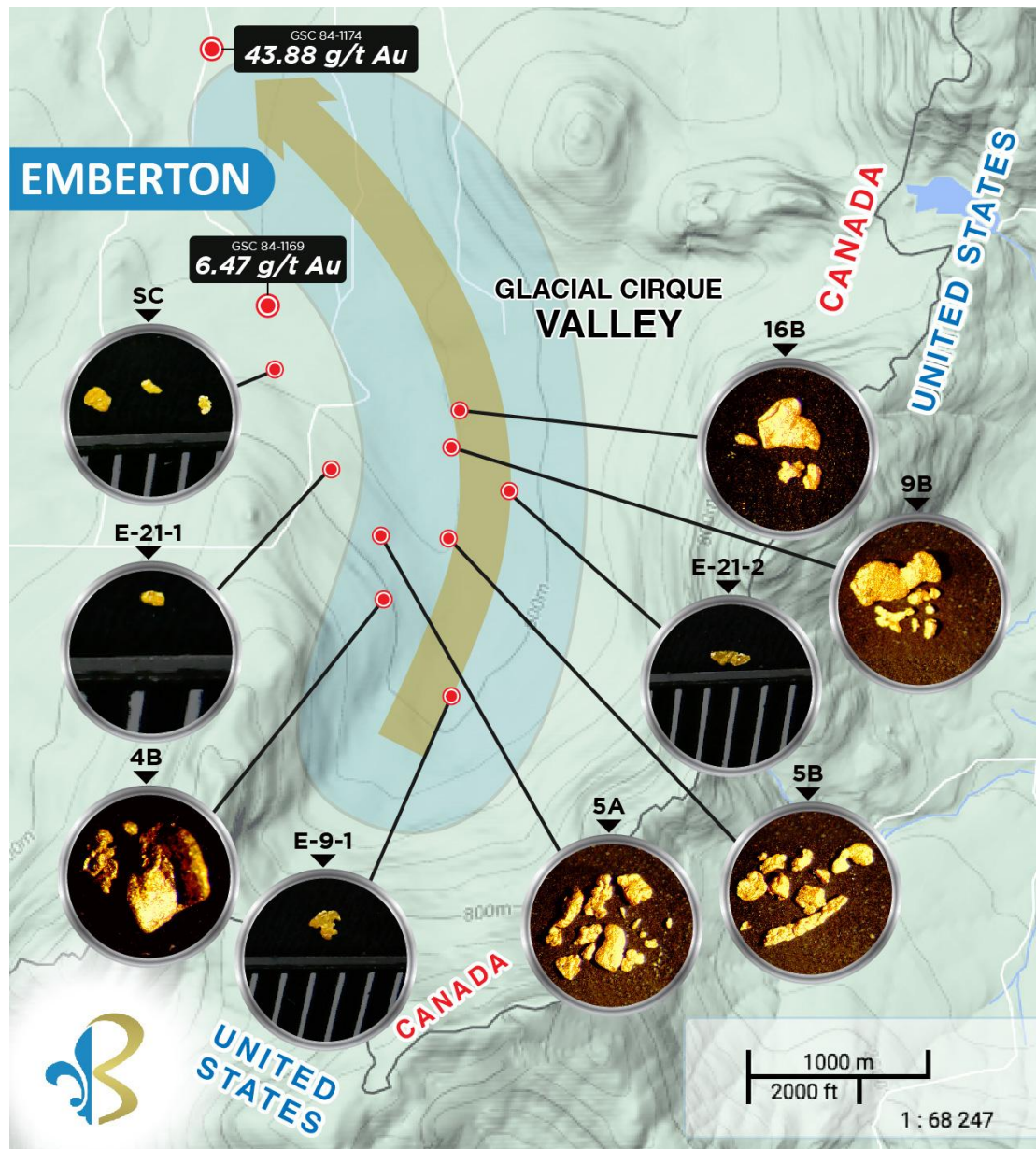
Comparable North American Placer Mines			
Projects	Location	Year	Avg. Grade g/m ³
Beauce Placer Mining (Beauce Gold Project)	Quebec	1960	0.43
Multiple private large placer operations	Yukon	2020	0.30
NovaGold (TSX-NG), Nome Gold Project	Alaska	2011	0.30

Source: Sedar: 43-101 Report - Beauce July 4th 2018, , Author B. Violette,
 Yukon Placer Mining Industry Reports 2010-2014, 2018-2020:Yukon Geological Survey
 NovaGold Resources: TECHNICAL REPORT NOME PLACER PROPERTY, 2006, Norwest Corporation

EMBERTON

New Discovery

- Gold over a 4 KM Dispersal Trail
- Large Gold Grains
- Unexplored Potential



STRONG SOCIAL ACCEPTABILITY

A community proud of its gold mining heritage



A St-Simon-les-Mines Town Hall Presentation

For the last 10 years, Patrick Levasseur has built strong local relationships and has garnered community support for BGF

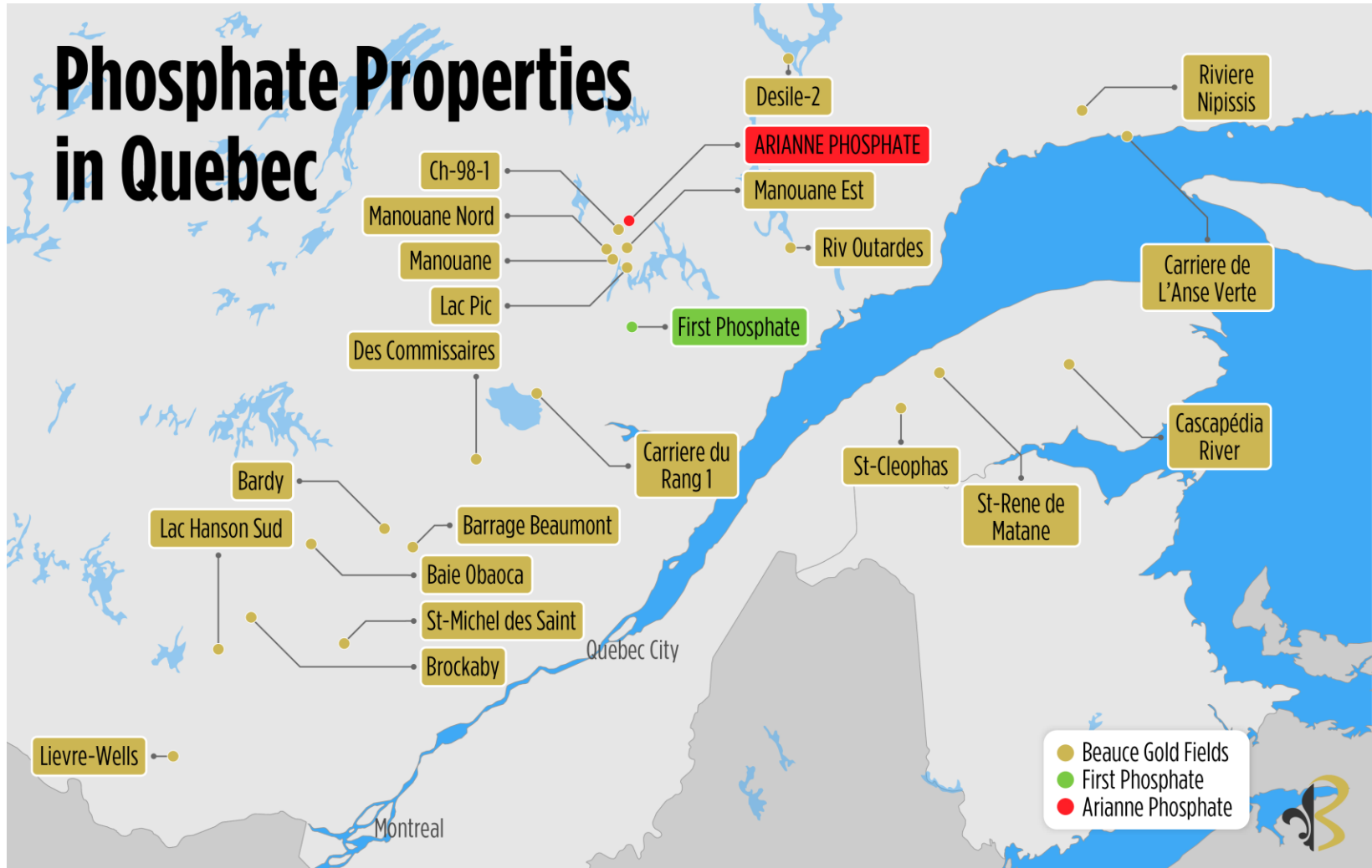
With each opportunity, BGF hires talented people from the community and has always prioritized the purchase of goods and services from local businesses



QUÉBEC
PHOSPHATE



Portfolio of 29 Phosphate Properties



Beauce Gold Fields 30 Phosphate Properties

Property	Region	Host Rock	Minerals	P2O5 Grade*
Riv. Cascapédia	Gaspésie	Mudstone	Phosphate	14%
St-Cléophas	Gaspésie	Phosphorite	Phosphate	
St-René de Matane	Gaspésie	Schiste	Phosphate	12%
Manouane Est	Lac Saint-Jean	Anorthosite	Phosphate	
Manouane Nord	Lac Saint-Jean	Anorthosite	Phosphate	
Manouane	Lac Saint-Jean	Anorthosite	Phosphate	
Lac Pic	Lac Saint-Jean	Anorthosite	Phosphate	
CH-98-0	Lac Saint-Jean	Leuconorite	Phosphate	8.59%
Des Commissaires	Lac Saint-Jean	Anorthosite	Phosphate-Titanium	6.94%
Carriere du Rang 1	Lac Saint-Jean	Gabbronorite	Phosphate	
Carriere Lecarne	Lac Saint-Jean	Feldspaths	Phosphate	
Mimosa	Lac-Saint-Jean	Feldpaths	Phosphate	
Carriere Laurentide	Lac Saint-Jean	Monzodiorite	Phosphate	
Riv. Aux Outardes	Baie Comeau	Nelsonite	Phosphate	10.7%
St-Michel-des-Saint	Mauricie	Gneiss	Phosphate-Titanium	2.89%
Riv. Au Lievre-Well	Laurentide	Pegmatite	Phosphate	
Lac Hanson-Sud	Laurentide	Pegmatite	Phosphate	
Brockaby	Mont-Laurier	Marbre	Lithium-Phosphate	
Carriere Sables LG	Montcalm	Mangerite	Phosphate	
Carriere Tremblay	Maniwaki	Dolomite	Phosphate	
Bardy	La Tuque	Gaboronorite	Phosphate	
Barrage Beaumont	La Tuque	Granite	Lithium-Phosphate	
Baie-Obaoca	Lanaudiere	Syenite	Phosphate	4%
Desile-2	Manicouagan	Gaboronorite	Phosphate-Titanium	4.95%
Car. De L'Anse Verte	Côte Nord	Anorthosite	Phosphate	
Riviere Nipissis	Côte Nord	Gabbro	Phosphate	
Carriere Lac Riverin	Côte Nord	Migmatite	Phosphate	
Lac du Canot	Côte Nord	Granite	Phosphate	



PHOSPHATE CLAIM HIGHLIGHTS

29 prospective phosphate properties throughout Quebec
410 claims totaling 27,224 hectares, 100% owned, royalty-free.
Largest portfolio of phosphate properties in Quebec & Canada
High P₂O₅ grades – up to 14%
Greater host-rock variety – anorthosite, petalite, dravite...
Diversified locations reduces social acceptability risks

*source: First Phosphate 43-101

LFP - Lithium Iron Phosphate Batteries

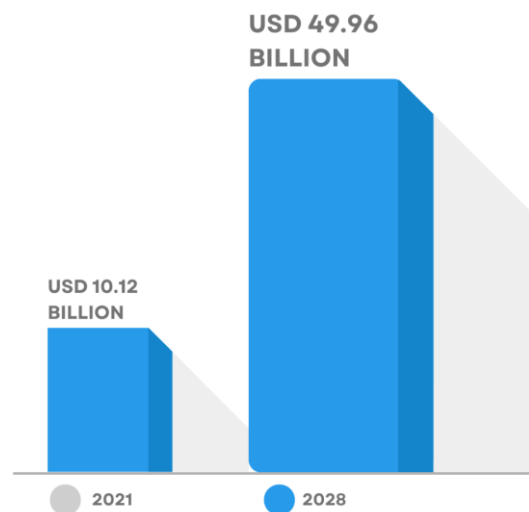
Quickly being embraced by EV companies.. Hyundai, now in Tesla Models 3 & Y, Ford F-150 in 2024 **\$10 billion 2021 to \$50 billion in 2028!**

URGENT domestic North American supply required - 90% of LFP batteries are currently made in China. China threatening to ban exports

2024 Canada & Quebec added phosphate to critical & strategic mineral list



Global LFP Growth Forecast



10 Years to Peak Phosphate

World will run-out of phosphate if no new deposits found

Phosphates critical in fertilizers to feed the world



For more information contact

Patrick Levasseur, President & CEO

(514) 262-9239

patrick.levasseur@beaucegold.com



Loads of info on our YouTube channel
<https://www.youtube.com/@beaucegoldfields>
Visit and subscribe!

